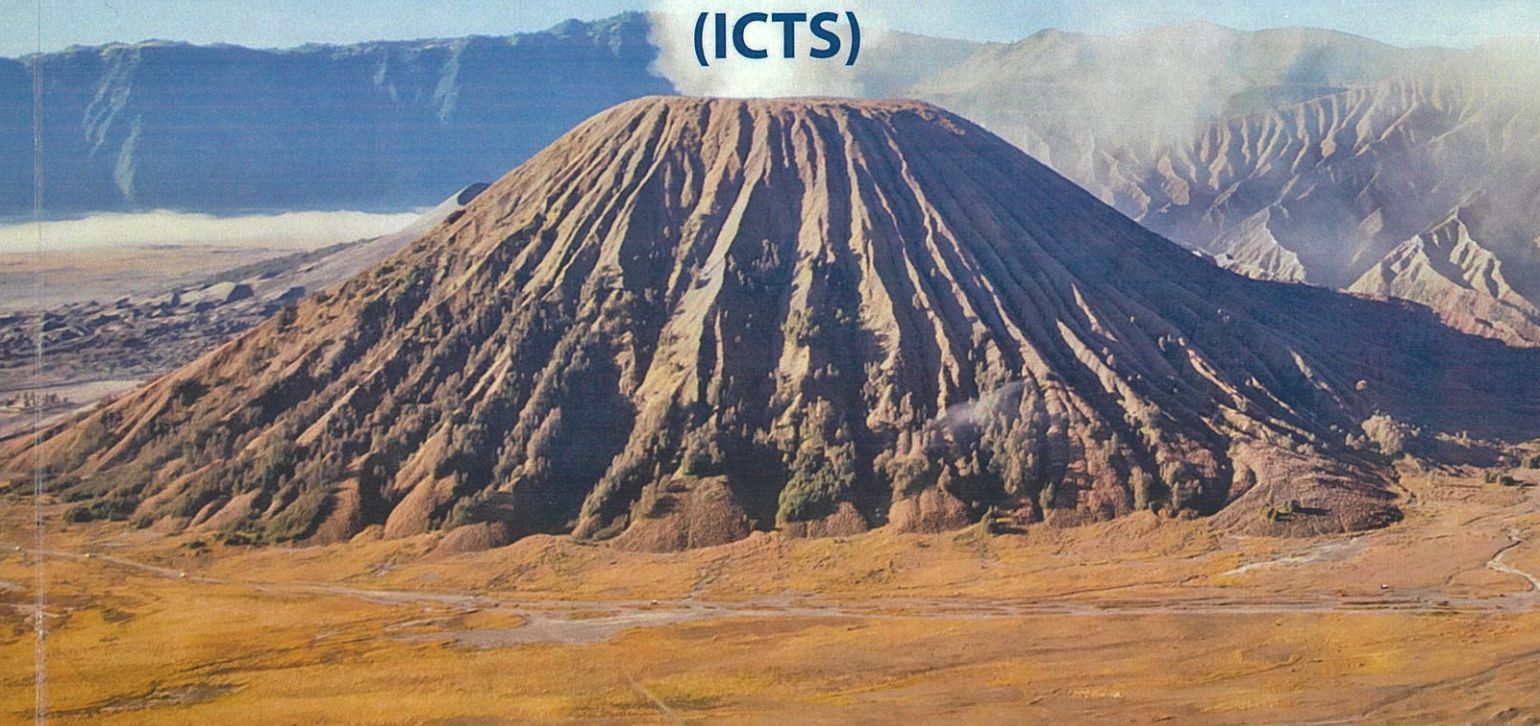




# THE PROCEEDING

**The 8<sup>th</sup> International Conference  
on Information & Communication  
Technology and Systems  
(ICTS)**



Department of Informatics, Faculty of Information Technology  
Institut Teknologi Sepuluh Nopember (ITS)  
**SEPTEMBER 24<sup>TH</sup> 2014**



**PROCEEDINGS OF**

**THE 8<sup>th</sup> INTERNATIONAL CONFERENCE ON  
INFORMATION, COMMUNICATION TECHNOLOGY  
AND SYSTEM (ICTS) 2014**

Surabaya, September 24<sup>th</sup>, 2014

**(ISSN: 2338-185X)**

**(ISBN: 978-1-4799-6857-2)**

---

**Organized by  
Department of Informatics  
Faculty of Information Technology  
Institut Teknologi Sepuluh Nopember (ITS)  
Surabaya, Indonesia**

**PROCEEDINGS OF  
THE 8<sup>th</sup> INTERNATIONAL CONFERENCE ON  
INFORMATION, COMMUNICATION TECHNOLOGY  
AND SYSTEM (ICTS) 2014**

**EXECUTIVE BOARD**

Triyogi Yuwono  
*Rector*

Agus Zainal Arifin  
*Dean of Faculty of Information Technology*

Nanik Suciati  
*Head of Department of Informatics*

**Keynote Speakers**

Kaoru Hirota (Tokyo Institute of Technology, Japan)  
Paul Strooper (The University of Queensland, Australia)  
Hiroshi Nakano (Kumamoto University, Japan)

**Scientific Committee**

John Batubara	Eng. Nanik Suciati
Tsuyoshi Usagawa	Fei Yan
Katsuhisa Maruyama	Chastine Faticah
Pitoyo Hartono	Royyana Muslim Ijtihadie
Aniati Murni Arymurthy	Tohari Ahmad
Heru Suhartanto	Kutilla Gunasekera
Akira Asano	Beben Benyamin
A Min Tjoa	Yong-Bin Kang
Stephanne Bressan	Agus Zainal Arifin
Benhard Sitohang	R.V. Hari Ginardi
Kai-Lung Hua	Siti Rochimah
Yoshifumi Chisaki	Waskitho Wibisono
DoHoon Lee	Daniel Oranova Siahaan
SungWoo Tak	Radityo Anggoro
Supeno Djanali	Harco Leslie Hendric Spits Warnars
Handayani Tjandrasa	Ahmad Hoirul Basori
Riyanarto Sarno	Tatik Maftukhah
Joko Lianto Buliali	M. Ali Ridho
Arif Djunaidy	Yeni Herdiyeni
Paul Strooper	Indah Agustien
Karen Blackmore	Arif Muntasa
Ilung Pranata	Siska Fitrianie
Ford Lumban Gaol	Sritrusta Sukaridhoto
Kuncoro Wastuwibowo	Wisnu Ananta Kusuma
Zhen-Tao Liu	Febriilian Samopa
Dhany Arifianto	

**General Chair**

Isye Ariesianti

**General Co-Chair**

Rizky Januar Akbar

**Organizing Committee**

Abdul Munif

Ridho Rahman Hariadi

Baskoro Adi Pratomo

Hudan Studiawan

Adhatus Solichah A.

Ratih Nur Esti Anggraini

Nurul Fajrin Ariyani

Wijayanti Nurul Khotimah

Erina Letivina Anggraini

Dini Adni Navastara

ISSN: 2338-185X

ISBN: 978-1-4799-6857-2

**CONTACT ADDRESS**

Department of Informatics

Faculty of Information Technology

Institut Teknologi Sepuluh Nopember (ITS) Surabaya

Gedung Teknik Informatika, ITS

Jalan Teknik Kimia, Kampus ITS Sukolilo, Keputih, Surabaya, Indonesia 60111

Tel. (+62)-31-5939214 Fax. (+62)-31-5913804

<http://www.if.its.ac.id/>



# Table of Contents

## Keynote Speech

- 1 Kansei Information in Humans-Robots Interaction (1 - 2)  
Kaoru Hirota
  - 2 A Model-Driven Approach to Developing and Testing Web Applications (3 - 4)  
Paul Strooper
  - 3 The University-wide Learning-support Systems and Effective Utilization of Students Activities (5 - 6)  
Hiroshi Nakano
- 

## A-Pattern Recognition, Intelligent Systems, Knowledge Data Discovery, Bioinformatics/Biomedical Apps, Content-Based Multimedia Retrieval, Remote Sensing, Image Processing, Big Data, Information Retrieval, Robotic, Modelling Simulation, Applied Computing

- A-1 Analysis of Sleep Deprivation Effect to Driving Performance Using Reactiontest Simulation (7 - 12)  
Ika Nurlaili Isnainiyah, Febriliyan Samopa, Hatma Suryotrisongko, and Edwin Riksakomara
- A-2 Attribute Oriented Induction High Level Emerging Pattern (AOI-HEP) future research (13 - 18)  
Harco Leslie Hendric Spits Warnars
- A-3 Finding Structured Data from Unstructured Data for Question Answering (19 - 24)  
Dewi W. Wardani and Titik Musyarofah
- A-4 Identification of Levee Strenght for Early Warning System Using Fuzzy Logic (25 - 30)  
Dwi Purnomo H., Muhammad Rivai and Kriyo Sambodho
- A-5 The Implementation of Preconcentrator in e-Nose System for Identifier Low Concentration Vapor Using Neural Network Method (31 - 36)  
Eddy Lybrech Talakua and Muhammad Rivai
- A-6 Simulation of Plant Growth Manipulation Using Rule Based Inference and C4.5 Algorithm (37 - 42)  
Karlina Khiyarin Nisa and Yaasiinta Cariens
- A-7 Algorithm for Respiration Estimation from 12-lead ECG Machine (43 - 46)  
Pratondo Busono
- A-8 An Ontology of Indonesian Ethnomedicine (47 - 52)  
Dewi W. Wardani, Sri Handina Yustianti, Umi Salamah, and Okid Parama Astirin
- A-9 Mining Decision to Discover the Relation of Rules among Decision Points in a Non-Free Choice Construct (53 - 58)  
Riyanarto Sarno, Putu Linda Indita Sari, Dwi Sunaryono, Bilqis Amaliah, and Imam Mukhlash
- A-10 Analysis Maritime Weather Charachteristic Based on Result of Land Weather Fuzzy Logic Prediction in Pasuruan, Probolinggo and Situbondo (59 - 64)  
Syamsul Arifin, Aulia Siti Aisjah, and Hafizh Fatah
- A-11 The Influence of k-NN Parameters on the localization accuracy of WSNs in Indoor environment (65 - 70)  
Billel Bengherbia, Abdelmoughni Toubal, Aboubakre Leboukh, and Madani Amine Saidi
- A-12 A New Approach for Lossless Image Compression Using Reversible Contrast Mapping (RCM) (71 - 76)  
Hendra Mesra, Handayani Tjandrasa, and Chastine Fatichah
- A-13 Spectral Reflectance Estimation Based On Leaf Digital Image Using Wiener Estimation for Sambiloto Leaf Age Prediction (77 - 80)

- Yeni Herdiyeni, Nurul Azizah, and Rudi Heryanto
- A-14 Performance Comparison of Learning to Rank Algorithms for Information Retrieval (81 - 86)  
Ridho Reinanda and Dwi H. Widyantoro
- A-15 Analyzing Brainwave Using Single Electroencephalographic Channel To Identify Manufacturing Supervisor Fatigue (87 - 92)  
N. Andharu F.P., F. Samopa, R. P. Wibowo, H. Suryotrisongko, B. Setiawan, F. Johan, and B. Wijanarko
- A-16 Sugarcane Leaf Disease and Severity Detection Estimation Based On Segmented Spots Image (93 - 98)  
Evy Kamilah Ratnasari, Mustika Mentari, Ratih Kartika Dewi, and R. V. Hari Ginardi
- A-17 Feature Extraction for Identification of Sugarcane Rust Disease (99 - 104)  
Ratih Kartika Dewi and R. V. Hari Ginardi
- A-18 A New Operator in Gravitational Search Algorithm Based on The Law of Momentum (105 - 110)  
R. V. Hari Ginardi and Abidatul Izzah
- A-19 Feasibility Study Of Detecting Canola Oil Adulteration With Palm Oil Using NIR Spectroscopy And Multivariate Analysis (111 - 114)  
Mutia Nurulhusna Hussain, Mohd Fared Abdul Khir, Mohd Hafizulfika Hisham, and Zalhan Md Yusof
- A-20 Performing Principal Component Analysis for Numeric Characters Segmentation on Kilowatt-Hour Meter Image (115 - 118)  
Shinta Puspasari
- A-21 Preliminary Study: Non cooperative Power Control Game Model for Cognitive Femtocell Network (119 - 124)  
Anggun Fitriani Isnawati, Risanuri Hidayat, Selo Sulisty, and I Wayan Mustika
- A-22 Natural Indonesian Speech Synthesis by using CLUSTERGEN (125 - 130)  
Evan Tysmayudanto Gunawan and Dhany Arifianto
- A-23 Rotating Shaft Crack Detection by Acoustic Emission (131 - 134)  
Novitha Thenu and Dhany Arifianto
- A-24 Spectrum Analysis of EMG Signal Frequency on Gripping and Releasing Grip by Using Handgrip Tool (135 - 140)  
Abd. Kholiq, Aulia M. T. Nasution, and Dhany Arifianto
- A-25 Hemorrhage Segmentation Using Mathematical Morphology and Digital Image Processing (141 - 146)  
Ricky Eka Putra, Handayani Tjandrasa, and Nanik Suciati
- A-26 Non-Uniform Decimation-Free Directional Filter Bank using Histogram Analysis for Image Enhancement (147 - 152)  
Naser Jawas, Agus Zainal Arifin, Arya Yudhi Wijaya, Anny Yuniarti, and Wijayanti Nurul Khotimah

---

#### **B-Human-Computer Interaction, Multimedia Application**

- B-1 Creep Offenses Evolution in Tower Defense Games using NSGA-II (153 - 158)  
Ariyadi, Supeno Mardi S. N., and Mauridhi H. Purnomo
- B-2 Introduce Discipline Through Educational Game - For Children Aged 5-6 years (159 - 164)  
Nia Saurina

---

#### **C- Software Engineering, Formal Methods, E-Learning, Enterprise Information System, Risk Management, Geographic Information System**

- C-1 Building a Future Farm Management Information Systems (FMIS): The Case of Australia (165 - 170)  
Wahyudi Agustiono



- C-2 Bandung Towards Smart City - A Study In SMEs for Social Media Adoption and Determinant Factors (171 - 176)  
Agastia Cestyakara, Kridanto Surendro
- C-3 Implementation of Information System Higher Education in Achieving Good University Governance (GUG) (177 - 182)  
Muhammad Tajuddin, Endang Siti Astuti, Lalu Hamdani Husnan and Nenet Nata Sudian Jaya
- C-4 Towards an Adaptive Model to Personalise Open Learning Environments using Learning Styles (183 - 188)  
Heba Fasihuddin, Geoff Skinner and Rukshan Athauda
- C-5 Information Quality Prediction Model based on Six Sigma in Biomedical Engineering (189 - 194)  
Dyah Diwasasri Ratnaningtyas and Kridanto Surendro
- C-6 Public Facilities Location Search With Augmented Reality Technology in Android (195 - 198)  
Gregorius Satia Budhi and Rudy Adipranata
- C-7 An Attendance Management System for Moodle using Student Identification Card and Android Device (199 - 204)  
Tsuyoshi Usagawa, Yuhei Nakashima, Yoshifumi Chisaki, Takayuki Nagai and Toshihiro Kita
- C-8 Implementation of the "Flipped Classroom" Concept for a Statistics and Probabilities Course (205 - 210)  
Yenni Merlin Djajalaksana
- C-9 Development and Evaluation of Online Quizzes to Enhance Learning Performance: a Survey of Student Assessment through MOODLE in Indonesian National University (211 - 216)  
Sary Paturusi, Yoshifumi Chisaki and Tsuyoshi Usagawa
- C-10 Mobile Learning Interpretation for Mandarin Language Learning (217 - 222)  
Yulius Hari and Darmanto
- C-11 Analysis Model of Promotion Strategies to Increase the Usage of Cloud Retail (223 - 226)  
Chris Tjandra, Charles Lim, I Eng Kho, and Meis Musida

---

**D-Distributed System, Computer Network and Architecture, Network Security, Infrastructure Systems and Services, Ubiquitous System and Infrastructure, Digital Forensic, High Performance Computing, Parallel Programming, Information Security**

- D-1 A Security Extension for Securing the Feedback & Rating Values in TIDE Framework (227 - 232)  
Ilung Pranata and Geoff Skinner
- D-2 Development of Distributed Honeypot Using Raspberry Pi (233 - 236)  
Charles Lim, Mario Marcello, Andrew Japar, Joshua Tommy and I Eng Kho
- D-3 Forensics Analysis of USB Flash Drives in Educational Environment (237 - 242)  
Charles Lim, Meily, Nicsen and Herry Ahmadi
- D-4 A Proposal of an Organizational Information Security Culture Framework (243 - 250)  
Areej Alhogail and Abdulrahman Mirza
- D-5 Applying Design Science Research to Innovations at ICT-enabled Service (251 - 256)  
Che-Chuan Hsu and Rua-Huan Tsaih
- D-6 Analyzing Kleptodata Process on Android Operating System (257 - 262)  
Muhammad Faris Ruriawan, Yudha Purwanto, and Surya Michrandi Nasution
- D-7 Distributed Expectation Maximization in Appointment Rumor Routing in WSN (263 - 268)  
Hamid Shokrzadeh, Nazanin Bazayar, Seyed Mohammad Yousefi Limanjoobi and Siavash Khorsandi
- D-8 The Performance of OCDM/WDM with Buffering Based on Shared Fiber Delay Line (269 - 274)

- Omar Najah, Kamaruzzaman Seman and Khairi Abdulrahim
- D-9 Gateway Selection by Focusing Delay and Packet lost Reduction in Wireless Mesh Networks (275 - 280)  
Rashno.M, Safi.S.M, Barati.H and Mirabedini.S.J
- D-10 System Monitoring LBS Motorized/Recloser For SCADA PLN APD East Java In The Electricity Network 20KV/Over Headline Medium Voltage (SUTM) Via Fiber Optic Transmission Media (281 - 286)  
Muhammad Taufiq Adi, Moh Noor Al Azam and Agustinus Bimo Gumelar
- D-11 Downlink Transmit Beamforming for MU-MIMO System (287 - 290)  
Subuh Pramono and Sugihartono
- D-12 Protection System of Client's Privacy on E-Health Services (291 - 296)  
Mike Yuliana, Amang Sudarsono, and Isbat Uzzin Nadhori
- D-13 Processing Performance on Apache Pig, Apache Hive and MySQL Cluster (297 - 302)  
Ammar Fuad, Alva Erwin, and Heru Purnomo Ipung
- D-14 Hypervisors Assessment in Education Industry: Using OpenBRR Methodology (303 - 308)  
Kevin Syahlie, Kho I Eng, Charles Lim and Maulahikmah Galinium
-



# Public Facilities Location Search With Augmented Reality Technology in Android

Gregorius Satia Budhi  
Informatics Department  
Petra Christian University  
Surabaya, Indonesia  
greg@petra.ac.id

Rudy Adipranata  
Informatics Department  
Petra Christian University  
Surabaya, Indonesia  
rudya@petra.ac.id

**Abstract**— In this research we developed an application for public facilities search with augmented reality technology so that search becomes easier and has an attractive interface. This application takes advantages of hardware that resides on the mobile device such as data connection, GPS, geomagnetic / digital compass and accelerometer. To perform a search, user directs the mobile device in the direction he wants and the application will display an icon of public facilities that are found and combined with real images coming from camera. Data residing on server and locally on mobile device so that applications can be run whether there is no internet connection. In order for local data on mobile devices are always up to date, application will synchronize with data contained on server.

**Keywords**—augmented reality, public facilities search, android.

## I. INTRODUCTION

Mobile devices lately grown so rapidly in the development of hardware and software. One of the advantages possessed by mobile device is the presence of some hardware on the same equipment, among which is a communication device, either in the form of voice (telephone) or data, a camera, a GPS (Global Positioning System), a geomagnetic sensor / digital compass, accelerometer and other sensors etc. [1]. Some hardware that resides on the mobile device allows augmented reality technology to be implemented. The augmented reality technology can be used to assist human life. Several studies related to augmented reality technology by utilizing the hardware in mobile devices has been done, including the establishment of a virtual three-dimensional world of photo [2], electronic compass calibration in outdoor augmented reality [3], a search of the mosque [4], indirect augmented reality [5], the identification of the mountain [6], the visualization of objects that lie outside of the camera [7]. There is also research the use of augmented reality in education [8].

In this research, the application is developed by using hardware in mobile devices, especially data communication devices, cameras, GPS, accelerometer and geomagnetic sensor to perform a search of public facilities by implementing augmented reality. User can choose public facilities such as gas stations, restaurants that will be searched using a mobile device by pointing the mobile device in the desired direction. The application will search for nearest public facilities on appropriate direction and display data in the form of an icon that is combined with real image from camera, where the position of the icon image that is displayed will be adjusted to

the position / direction of actually of public facilities. Users will be able to see detail information such as location, distance, as well as a general statement or description of the selected facilities. Applications can also show the route from user's position toward the public facilities. This research is a further development of the research that has been conducted by Mazharudin [4] with the development of the type of data sought as well as the facilities of local data and ability to give notification while there is new data on server and also display route from current position to the location. Normally, data of public facilities located on server and requires an internet connection to query those data when the application is used. This has the drawback that application cannot be used if the internet connection is lost. So at this research, we use local data which will be synchronized with data on the server so that local data on the mobile device is always up to date with data on the server. Also we implement push notification, so that if there is additional data on the server, the application will be notified and user can update local data.

## II. AUGMENTED REALITY

Augmented reality is a variation of virtual environment, or more commonly referred to as virtual reality. Virtual environment technology will insert user into the synthetic environment, and for entry into the synthetic environment, user can not see the real world around him. But augmented reality allows users to see real world with virtual objects ride or join real world. So that augmented reality will complement real world, do not replace real world. Users will be able to see real object simultaneously with virtual objects [9].

Modern augmented reality was first introduced in 1993 by Feiner et al [10] to create a system called KARMA that serves to project the wireframe and repair instruction schematic above equipment is being repaired. And research on augmented reality technology continues to evolve to this day along with advances in hardware and software technology. Augmented reality system must have three conditions in order to function properly [11]. The first is a tracker that is used must be accurate. Second, latency between tracker and graphics engine should be very low and the last, tracker must be able to work on far-reaching.

## III. ON-DEMAND DATA VS LOCAL DATA MECHANISM

There are two types of data placement mechanism could be used for the search, namely on-demand data and local data

mechanism. On-demand data mechanism has advantage of requiring a small memory allocation on devices that are used. Data is only downloaded when needed, is stored in temporary variables to be displayed on device screen and then could be destroyed when not in use. But on-demand data mechanism has disadvantage of always requiring an internet connection to server where data resides. It will take time to establish communication and to download data, and if at that time there is no internet connection available, then application will stop and cannot be functioned properly.

Local data mechanism has advantage of very fast query data because data are located in the device's memory. The disadvantage is that data available on local is not always up-to-date, so it is necessary to synchronize local data with data available on the server. In addition, the size of local storage relatively small compared to the available storage on the server and thus it requires further local storage management.

Taking into account the advantages and disadvantages of each data placement mechanism, in this research we used local data mechanism. The consideration is the need for real-time processing when doing a search with augmented reality, could be fulfilled by using local data mechanism. It is also meet one condition of augmented reality in order to function properly, latency between tracker and graphics engine should be very low. Using on-demand data mechanism could take time for download process so that the search process with augmented reality could be delayed.

To overcome the limitations of a small space on local storage, we use a search range value specified by user as a limitation to synchronize. So at the time of synchronization, not all data are downloaded from the server, but only data that is met criteria in the search range will be synchronized. If at any time the local storage is full, data deletion process will be done. Data location that is farthest from the current search range will be removed first. To address the possibility of local data will be out-of-date when user move, the application is designed to always synchronize periodically every several minutes.

In addition to using local data mechanism, we also use on-demand data mechanism only to get secondary information including description and picture. The data will be downloaded only when user requires detailed information of a selected location.

#### IV. DISTANCE CALCULATION

To calculate the distance between two location points based on latitude and longitude value obtained from sensor, haversine formula can be used. The haversine formula can be seen as follows [12].

$$\Delta lon = lon2 - lon1 \quad (1)$$

$$\Delta lat = lat2 - lat1 \quad (2)$$

$$a = \sin^2\left(\frac{\Delta lat}{2}\right) + \cos(lat1) * \cos(lat2) * \sin^2\left(\frac{\Delta lon}{2}\right) \quad (3)$$

$$c = 2 * \text{atan2}(\sqrt{a}, \sqrt{1-a}) \quad (4)$$

$$d = \text{earthRadius} * c \quad (5)$$

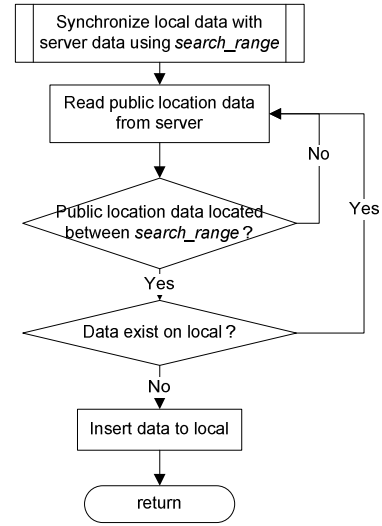


Fig. 1. Synchronization process

#### V. SYNCHRONIZATION PROCESS

Before synchronizing, user should enter search range or radius value. This search range value is used to restrict data to be synchronized. Synchronization is done by reading data that resides on server according to search range value and compare with data contained in local database based on specified ID. If there is no ID in local database, then data insertion will be done. From data read from server, only public location data located within search range will be used in synchronization process. The overall synchronization process could be seen in Figure 1.

#### VI. SYSTEM DESIGN AND IMPLEMENTATION

An outline of the application developed can be seen in Figure 2. Data attribute used in this application includes place ID, ID of place category, name of place, description, image, latitude and longitude. Search data is done by comparing the distance between current location of user in accordance with the direction and all of place location in database. Searching is limited by using radius parameter and 60-degree viewing angle. All of place located in the range will be shown in display.

Besides application running on android system, there is also application on the web server which is used to maintain database. If there is additional data on the server, then the application server will perform a push notification to android application so user knows there are new data and be able to sync to get the latest data.

#### VII. EXPERIMENTAL RESULT

When first run, the application will ask user to enter the desired search radius along with the desired category of public facilities. After that, the application will synchronize with the server so that it will get the latest data. The radius is used to limit the search so that the results are not too many that can cause search results overlapped each other on the mobile device screen. The search category is used to limit the search results according to the category desired by user. The initial view of the application can be seen in Figure 3.



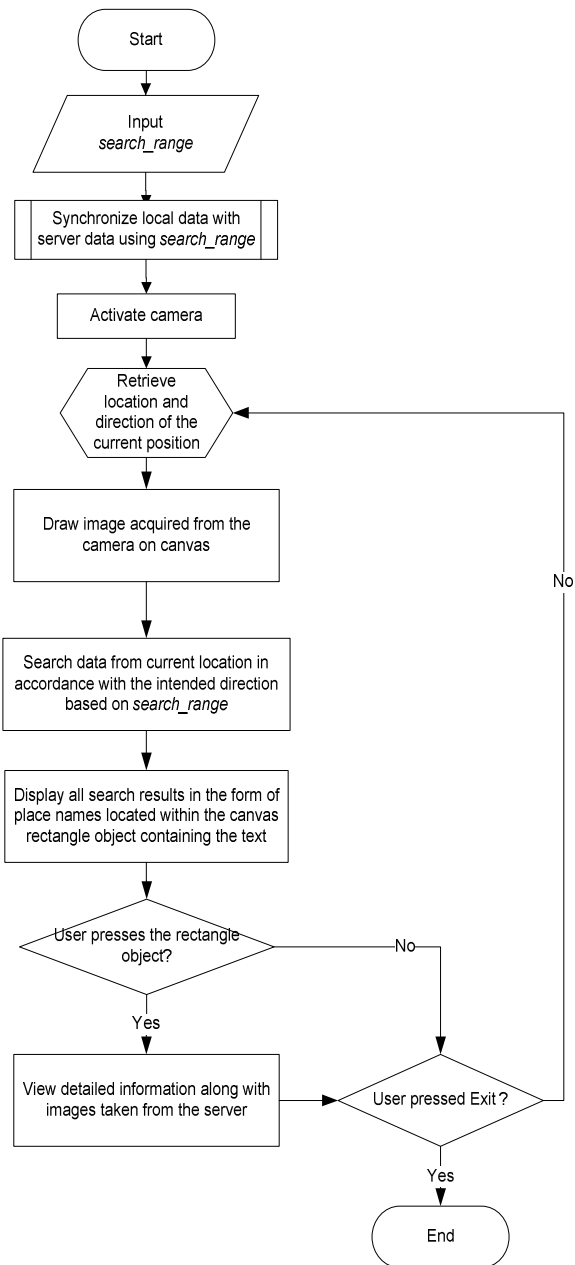


Fig. 2. System design

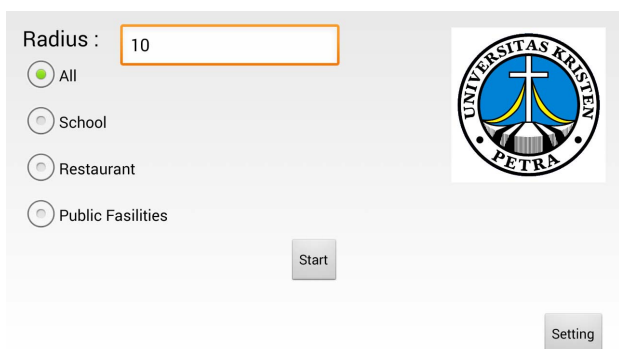


Fig. 3. Initial display applications

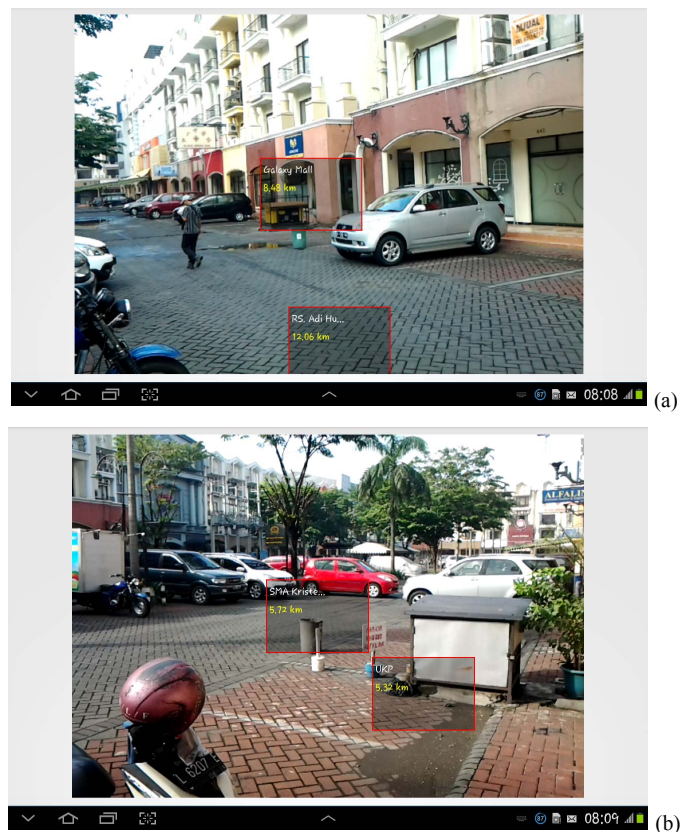


Fig. 4. Search results

After user enters a search category and its radius, then user can move the mobile device to get the search results in the desired direction. Along with the movement direction of user, the application looks for public facilities contained in that direction starting from current user position as far as of the radius that was previously entered. Search results will be obtained with the short information displayed on screen, the name of public facilities and distance from current user position. Some results can be seen in Figure 4.

In the search results in Figure 4, user is at a location on Mayjend Sungkono street, Surabaya, and radius of search is 30 km from the location for all public facilities. Based on the data of existing public facilities, the obtained results are Adi Husada Hospital, 12.06 km of the location and Galaxy Mall, 8.48 km from the location of the intended direction. This can be seen in Figure 4a. Then user change the direction of the search and get search results that SMA Kristen Petra at a distance of 5.72 km and UKP (Petra Christian University) is 5.32 km away. These results can be seen in Figure 4b. Obtained distance is straight line distance from the position of user to the location, not the distance traveled by road.

To be able to display more detailed information, user can select one of the search results. For detailed information, the application will read data from the server, either text or image. Information will be displayed on the next page. In Figure 5 can be seen information and image from one of the search results.

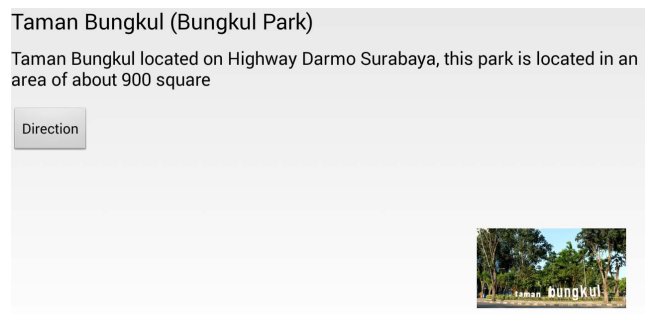


Fig. 5. Information and image from one of search results

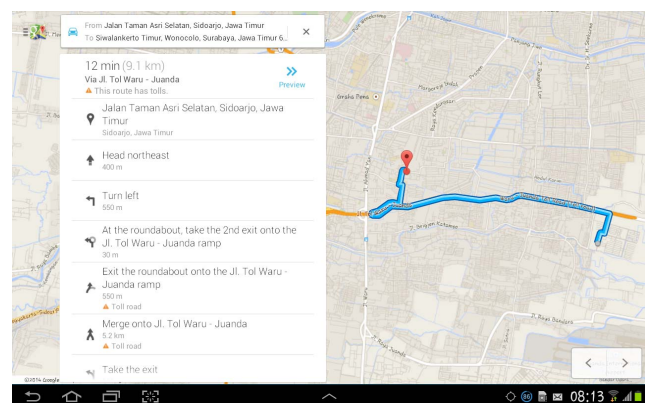


Fig. 6. Map and route to location

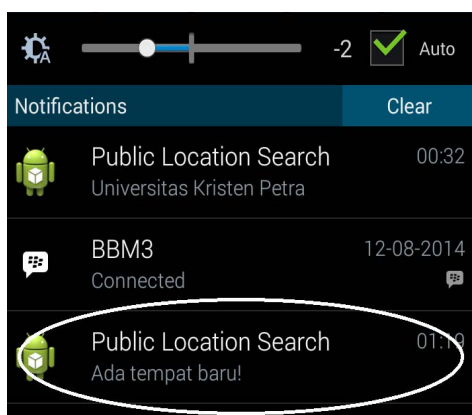


Fig. 7. Notification of additional data on server

On the information page, there is a button 'Direction' that can be used to display a map and a route from current user position to the intended location of public facilities. This feature uses the API provided by Google to ask questions along the route. Results of maps and routes can be seen in Figure 6.

If there is additional data on the server, there will be a notification on the mobile device. The notification can be seen in Figure 7.

## CONCLUSION

In this research, we have developed an application for searching the public facilities location. From the experiment that has been done, it can be concluded that the application can perform a reading with precise position and direction, and can search for existing public facilities in the database in accordance with the direction intended by the application with a certain predetermined diameter range. By using local data mechanism, the application has a high speed to search and display the results on the display device that meets criteria of augmented reality.

## ACKNOWLEDGMENT

This research was funded by Research Center, Petra Christian University, Surabaya, Indonesia (020/Pen-LPPM/UKP/2013) fiscal year 2013/2014, entitled "Development of Public Facilities Location Search Application With Augmented Reality Technology on Android". We also thank to Max Loren Limatoro, Singgih M. Soephom and Steven F. Harjanto for their work on system coding.

## REFERENCES

- [1] Sensors Overview, [http://developer.android.com/guide/topics/sensors/sensors\\_overview.html](http://developer.android.com/guide/topics/sensors/sensors_overview.html), last access on Oct 2013.
- [2] Aoki T, Tanikawa T, Hirose M, "Virtual 3D World Construction by Inter-connecting Photograph-based 3D Models," in Proceedings of The IEEE Virtual Reality Conference, 2008.
- [3] Bruce Hoff, Ronald Azuma, "Autocalibration of an Electronic Compass in an Outdoor Augmented Reality System," in Proc. of Int'l Symp. on Augmented Reality, Munich, Germany, 5-6 Oct 2000.
- [4] Ary Mazharuddin S, Diaz Hendrianto, "Augmented Reality on Android Operating System-Based Device; Case Study: Mosque Finder," in KURSUSOR Journal, vol 6, no 4, July 2012.
- [5] Wither, Jason, Yun-Ta Tsai, Ronald Azuma, "Indirect Augmented Reality," Computers & Graphics, vol. 35, #4, Special issue on Mobile Augmented Reality, pp 810-822, 2011.
- [6] Stephan Karpischek, Claudio Marforio I, Mike, Godenzi, Stephan Heuel, and Florian Michahelles. "Mobile Augmented Reality to Identify Mountains," Workshop at the International Symposium on Mixed and Augmented Reality, Florida, USA, 19 Oct 2009.
- [7] Torben Schinke, Niels Henze, Susanne Boll, "Visualization of Off-screen Objects in Mobile Augmented Reality," in proceedings of the 12th International Conference on Human Computer Interaction with Mobile Devices and Services, Lisboa, Portugal, 7-10 Sept 2010.
- [8] Billingham, M., Kato, H., & Poupyrev, I, "The MagicBook: A Transitional AR Interface," Computers and Graphics, pp 745-753, 2001.
- [9] Yuen, S., Yaoyuneyong, G., and Johnson, E., "Augmented reality: An Overview and Five Directions for AR in Education," Journal of Educational Technology Development and Exchange, 4(1), 119-140, 2011.
- [10] Feiner, S., MacIntyre B. and Seligman D., "Knowledge-based Augmented Reality," Communication of ACM vol 7, 1993.
- [11] Azuma, Ronald, "Tracking Requirements for Augmented Reality," Communication of ACM, vol 7. pp 50-51, 1993.
- [12] Hedges, Andrew, "Finding Distances Based On Latitude and Longitude", <http://andrew.hedges.name/experiments/haversine>, last access Oct 2013.