



PREFACE



ABOUT CITIES 2015 INTERNATIONAL CONFERENCE

CITIES is an annual event hosted by the Department of Urban and Regional Planning, Sepuluh Nopember Institute of Technology. Ever since the first time it was held in 2005, CITIES has covered a broad range of topics on the spatial sciences:

- 2005: Innovations in Spatial Planning Practices for Development and Decentralization.
- 2008: In Search of Integration: Between Planning and Spatial Programming.
- 2009: Towards Sustainable, Competitive, and Autonomous Spatial Planning.
- 2010: Facing the Future: Innovations in Planning Research and Practices.
- 2011: Spatial Planning Research Agenda for Sustainable and Just Urban and Regional Development.
- 2012: Facing Global Challenges in The Future Urban Sphere.
- 2013: Resilient Cities: Beyond mitigation, preparedness, response, and recovery
- 2014: Eco City, Utopia or Reality ?

This year, CITIES aims to explore the theme 'Intelligent Planning Towards Smart City'. Intelligent planning is a challenge to urban planning and all disciplines involved in general. Urban Planning and Management in most developing countries are still facing many challenges to overcome. Recent developments in computer and information technology actually provide planners with the opportunity to improve planning processes. However, despite of the rapid development of computer technology in term of computing power and available applications, planners never fully utilized the diversity of methods, techniques, and models available in computer systems in planning and decision making practices. One of those challenges is how to improve the planning process by embracing recent developments in intelligent ways. In here, Intelligent ways cover multi aspect such as the use of innovation in technology, computers, practices, concepts and theories. These way is esential to ensure enhancement on the planning processes for welcoming era of Smart City.

In this CITIES 2015 event, we want to promote that intelligent planning is indispensable for the development of the existing planning mechanisms, particularly in developing countries. We expect a lot of ideas and dissemination of findings that drive changes in the conventional planning process to be a breakthrough of a concept and the latest technology. Additionally, CITIES want to capture the potential of papers, establish communication and cooperation opportunities related to the themes and topics there are and can be a place of information exchange among participants across countries.

FULL-PAPER REVIEWER

Prof. Jayant K Routray

Professor of Regional and Rural Development Planning, Asian Institute of Technology

Prof. Tetsu Kubota

International Development and Cooperation (IDEC), Hiroshima University

Ass. Prof. Rachmad Firdaus, Ph.D.

International Development and Cooperation (IDEC), Hiroshima University

Dr. Suk-Chan Ko

Urban Planning and Real Estate, Dankook University

Dr. Ruth Lane

Centre for Geography and Environmental Sciences, Monash University

Dr. Ir. Eko Budi Santoso, Lic.Rer.Reg.

*Regional Planning, Sepuluh Nopember Institute of Technology***Steering Committee**

Dr. Ing. Ir. Haryo Sulistyarso

Dr. Ir. Rimadewi Supriharjo, MIP.

Adjie Pamungkas, ST, M.Dev.Plg., Ph.D

Cahyono Susetyo, ST., M.Sc.

Hertiari Idajati, ST., M.Sc.

Organizing Commiteee

Ardy Maulidy Navastara, ST. MT.

Arwi Yudhi Koswara, ST.

Dian Rahmawati, ST., MT.

Ema Umilia, ST., MT.

Karinia Pradinie T., ST., M.Eng.

Prananda Navitas, ST., M.Sc.

Fendy Firmansyah, ST.,MT.

Surya Hadi Kusuma, ST., MT.

Moch Yusuf, ST., M.Sc.

Vely Kukinul Siswanto ST.M.Sc. (Organizing Secretary)

Ummi Fadlilah Kurniawati, ST.M.Sc. (Organizing Secretary)

Belinda Ulfa ST., M.Sc. (Conference Co-Chair)

Nursakti Adhi Pratomoatmojo, ST., M.Sc. (Conference Chair)



Procedia

Journal Pre-proof



ICITEL 2019: Intelligent Planning towards Smart Cities

19-20 September 2019
Lisbon, Portugal

1 selected:

Download PDF

Export

Expand all article previews

1.

Preface

Open access

Pages 1-2

Download PDF

2.

Prediction of Urban Growth Using the Bucket Model

Open access - Original research article

Pages 3-10

I. Made I.M. Brunner

Download PDF

Article preview

3.

Alternatives Selection for Sustainable Transportation System in Kasongan City

Open access - Original research article

Pages 11-18

Evan Buwana, Hayati Sari Hasibuan, Chairil Abdini

Download PDF

Article preview

4.

Spatial Dynamics Model for Sustainability Landscape in Cimandiri Estuary, West Java, Indonesia

Open access - Original research article

Pages 19-30

Supriatna, Jatna Supriatna, Raldi Hendro Koestoer, Noverita Dian Takarina

Download PDF

Article preview

5.

Land Use Development and its Impact on Airport Access Road

Open access - Original research article

Pages 31-37

Yoanita Eka Rahayu, Ervina Ahyudanari, Nursakti Adhi Pratomoadmojo

Download PDF

Article preview

6.

Analysis of the Possible Use of Park and Ride for Tram and Monorail to Facilitate The Air Travelers Based on Sub-District Area

Open access - Original research article

Pages 38-44

Rr. Ulfia Surya Kartika, Ervina Ahyudanari

[Download PDF](#)

[Article preview](#)

7.

Measuring Service Capacity of Public Facilities Based on Supply Aspect (Case Study: Elementary School in Malang City)

Open access - Original research article

Pages 45-51

Deni Agus Setyono, Deny Dwi Cahyono, Masdar Helmy

[Download PDF](#)

[Article preview](#)

8.

Study on Land Cover Change of Ciliwung Downstream Watershed with Spatial Dynamic Approach

Open access - Original research article

Pages 52-59

Muhammad Ali, Setia Hadi, Bambang Sulistyantara

[Download PDF](#)

[Article preview](#)

9.

Who Benefits? The Case of the Suramadu Bridge Construction"

Open access - Original research article

Pages 60-69

Uly Faoziyah

[Download PDF](#)

[Article preview](#)

10.

Urbanization and Change in Cilacap Regency

Open access - Original research article

Pages 70-74

Ken Martina Kasikoen

[Download PDF](#)

[Article preview](#)

11.

Traffic Impact Assesment Practice in Indonesia

Open access - Original research article

Pages 75-80

Karda. D. Yayat, B. Kombaitan, Pradono, H.P. Heru Purboyo

[Download PDF](#)

[Article preview](#)

12.

Evaluation of Indonesia Road Safety Campaigns (RUNK)

Open access - Original research article

Pages 81-86

Hera Widyastuti, Istiar, Russel G. Thompson, Richard Tay, ... Aldila Riana Prabawati

[Download PDF](#)

[Article preview](#)

13.
- Analysis of Land Cover Changes and Landscape Fragmentation in Batanghari Regency, Jambi Province
Open access - Original research article
Pages 87-94
Atik Nurwanda, Alinda Fitriany Malik Zain, Ernan Rustiadi
[Download PDF](#)
[Article preview](#)
14.
- Analysis of Urban Agriculture Sustainability in Metropolitan Jakarta (Case Study: Urban Agriculture in Duri Kosambi)
Open access - Original research article
Pages 95-100
Darmawan Listya Cahya
[Download PDF](#)
[Article preview](#)
15.
- Spatial Analysis of Users Movement Pattern and its Socialization on Public Facilities and Environment through the ESVA
Open access - Original research article
Pages 101-106
Mahendra Wardhana
[Download PDF](#)
[Article preview](#)
16.
- The Effect of Land Use Zonings on Housing Development: The Introduction of Cdl Approach in the Border Area of Surabaya and Sidoarjo Regency, Indonesia
Open access - Original research article
Pages 107-114
Pindo Tutuko, Zhenjiang Shen
[Download PDF](#)
[Article preview](#)
17.
- Location Analysis for Petrol Filling Station Based on Stakeholders' Preference and Seismic Microzonation
Open access - Original research article
Pages 115-123
Belinda Ulfa Aulia, Widya Utama, Putu Gde Ariastita
[Download PDF](#)
[Article preview](#)
18.
- Spatial Service of Petrol Filling Stations in Surabaya City
Open access - Original research article
Pages 124-131
Cahyono Susetyo
[Download PDF](#)
[Article preview](#)
19.
- Surabaya Smart Subway Development as an Alternative Mode in Ahmad Yani Corridor Surabaya by TOD Concept Application

Open access - Original research article
Pages 132-138
Muhammad Ermendo Nurman Sasono, Santika Purwitaningsih, Lukman Yusuf, Ardy Maulidy Navastara
[Download PDF](#)
[Article preview](#)

20.

Home-based Enterprises Approach for Post Disaster Housing: Learnt from Post Disaster Redevelopment Programme in Developing Countries

Open access - Original research article
Pages 139-145
Wido Prananing Tyas
[Download PDF](#)
[Article preview](#)

21.

Energy Resilience Assessment by Using SEM Approach in the Central Java Province, Indonesia

Open access - Original research article
Pages 146-151
Maryono, Holi Bina Wijaya, Widjonarko, Pangli
[Download PDF](#)
[Article preview](#)

22.

Parametric Simulation as a Tool for Observing Relationships between Parcel and Regulations in Unplanned Commercial Corridor

Open access - Original research article
Pages 152-159
Julia Dewi, Uras Siahaan, Rumiati R. Tobing
[Download PDF](#)
[Article preview](#)

23.

Discovering Public Preferences for School Location in Surabaya

Open access - Original research article
Pages 160-167
Daniel Hary Prasetyo, Jamilah Mohamad, Rosmadi Fauzi
[Download PDF](#)
[Article preview](#)

24.

Urban Compactness Effects on the Distributions of Healthy Houses in Yogyakarta City

Open access - Original research article
Pages 168-173
M. Sanioyochansyah, Arta Farmawati, Dina Septari Anindyah, Lanthika Atianta
[Download PDF](#)
[Article preview](#)

25.

Rice Land Conversion into Plantation Crop and Challenges on Sustainable Land Use System in the East Tanjung Jabung Regency

Open access - Original research article
Pages 174-180
Asnelly Ridha Daulay, K.P. Eka Intan, Baba Barus, N. Bambang Pramudya
[Download PDF](#)

Article preview

26. [Article preview](#)
- Railway Infrastructure to Support Inter-modal Transportation from Port to Hinterland (Case Study-Manyar Port)
Open access - Original research article
Pages 181-185
Hera Widyastuti, Wahyu Herijanto, Anak Agung Gde Kartika, Budi Rahardjo, ... Feni Widiywati
[Download PDF](#)
[Article preview](#)
27. [Article preview](#)
- The Space Utilization by Street Vendors Based on the Location Characteristics in the Education Area of Tembalang, Semarang
Open access - Original research article
Pages 186-193
Retno Widjajanti
[Download PDF](#)
[Article preview](#)
28. [Article preview](#)
- Smart Growth, Smart City and Density: In Search of The Appropriate Indicator for Residential Density in Indonesia
Open access - Original research article
Pages 194-201
Retno Susanti, Sugiono Soetomo, Imam Buchori, P.M. Brotosunaryo
[Download PDF](#)
[Article preview](#)
29. [Article preview](#)
- (Adaptive) Networks in Strategic Areas in Indonesia
Open access - Original research article
Pages 202-209
Syaiful Muazir, Horng-Chang Hsieh
[Download PDF](#)
[Article preview](#)
30. [Article preview](#)
- Land Use Change in Sub District Mranggen Because of Residential Development
Open access - Original research article
Pages 210-215
Diah Intan Kusumo Dewi, R. Anita Ratnasari, Pangli
[Download PDF](#)
[Article preview](#)
31. [Article preview](#)
- The Processes Analysis of Urbanization, Spatial Articulation, Social Change and Social Capital Difference in the Dynamics of New Town Development in the Fringe Area of Makassar City (Case Study: In Metro Tanjung Bunga Area, Makassar City)
Open access - Original research article
Pages 216-231
Batara Surya
[Download PDF](#)
[Article preview](#)
32. [Article preview](#)

Spatio Temporal Analysis Trend of Land Use and Land Cover Change Against Temperature Based on Remote Sensing Data in Malang City

Open access - Original research article

Pages 232-238

Purwanto, Dwiyono Hari Utomo, Bharadhian Rizki Kurniawan

[Download PDF](#)

[Article preview](#)

33.

Typology of Urban Hawker's Location Preferences

Open access - Original research article

Pages 239-246

Murtanti Jani Rahayu, Isti Andini, Rufia Andisetyana Putri

[Download PDF](#)

[Article preview](#)

34.

3D Interactive Simulation System (3DISS) Using Multimedia Application Authoring Platform for Landscape Planning Support System

Open access - Original research article

Pages 247-254

Herry Santosa, Shinji Ikaruga, Takeshi Kobayashi

[Download PDF](#)

[Article preview](#)

35.

Towards a Just City in Information Era: Understanding the Inclusiveness of Community Network Induced by Telecommunication Technology at the Local Level (Case Study: Cihapit and Cipaganti Neighborhoods, Bandung City, Indonesia)

Open access - Original research article

Pages 255-264

Dhimas Bayu Anindito, Ridwan Sutriadi

[Download PDF](#)

[Article preview](#)

36.

Smart City and Geospatial Information Availability, Current Status in Indonesian Cities

Open access - Original research article

Pages 265-269

Heri Sutanta, Trias Aditya, Retno Astrini

[Download PDF](#)

[Article preview](#)

37.

Apartment Planning Concept in Settlement Area of Sleman District, D.I. Yogyakarta (Case Study: H Residence Plemburan Hinggil Apartment)

Open access - Original research article

Pages 270-277

S.T. Patricia Pahlevi Noviandri

[Download PDF](#)

[Article preview](#)

38.

Housing Development: Sign and Symptoms in Middle City of Indonesia

Open access - Original research article

Pages 278-285
Venny Veronica Natalia, Shirly Wunas
[Download PDF](#)
[Article preview](#)

39.

Challenge and Opportunity of Settlement and Infrastructure Development in the Small Island (Case Study: Pulau Laut Kelautan District, Kotabaru Regency)

Open access - Original research article
Pages 286-293
A.R. Rohman Taufiq Hidayat, Wawargita Permata Wijayanti, Sebti Kurniati, Eko Armando Maha
[Download PDF](#)
[Article preview](#)

40.

Sustainable Building Material for Noisy Urban Residential Space

Open access - Original research article
Pages 294-299
Erni Setyowati, Hendro Trilisty
[Download PDF](#)
[Article preview](#)

41.

Cultural and Needs-based Housing Development Case Study: The Bugis Community in Makassar City

Open access - Original research article
Pages 300-308
Arifuddin
[Download PDF](#)
[Article preview](#)

42.

Settlement Adaptation by Reshaping Dwellings in the Degrading Area at Genuk District of Semarang City, Indonesia

Open access - Original research article
Pages 309-316
Parfi Khadiyanta, Santi Dewantari
[Download PDF](#)
[Article preview](#)

43.

Green Housing Evaluation Through Carbon Footprint Dynamic Model: Questioned the Urban Policy Sustainability

Open access - Original research article
Pages 317-324
Mesi Shinta Dewi, Djoko M. Hartono, Setyo S. Moersidik, Iwan Kustiwan
[Download PDF](#)
[Article preview](#)

44.

Utilization Driven Diversity of Public Space in Rusunawa Makassar, Indonesia

Open access - Original research article
Pages 325-333
Ratriana Said Bunawardj, Yoshihiro Suzuki, Yuasa Hiroki
[Download PDF](#)
[Article preview](#)

45.



Toward Resilient and Sustainable City Adaptation Model for Flood Disaster Prone City: Case Study of Jakarta Capital Region

[Open access - Original research article](#)

[Pages 334-340](#)

[Andi Renald, Prijono Tjiptoherijanto, Emirhadi Suganda, Ruchyat Deni Djakapermana](#)

[Download PDF](#)

[Article preview](#)

46.



Reuse Building Materials Ruins in Post-earthquake Reconstruction Method in Bantul

[Open access - Original research article](#)

[Pages 341-346](#)

[Kahar Sunoko, Josef Prijotomo, V. Totok Noerwasito](#)

[Download PDF](#)

[Article preview](#)

47.



The Challenges of Disaster Governance in an Indonesian Multi-hazards City: A Case of Semarang, Central Java

[Open access - Original research article](#)

[Pages 347-353](#)

[Artiningsih, Jawoto Sih Setyono, Rizki Kirana Yuniartanti](#)

[Download PDF](#)

[Article preview](#)

48.



Earthquake Microzonation and V_s , 30 Mapping Based on Microtremor Measurement (Case Study in Kaliwates and Sumpster Sub-District, Jember Regency)

[Open access - Original research article](#)

[Pages 354-360](#)

[S.P. Nur Ayu Diana Citra Dewi, Rini Trisno Lestari, Ria Asih Aryani Soemitro, Dwa Desa Warnana](#)

[Download PDF](#)

[Article preview](#)

49.



Resettlement Following the 2010 Merapi Volcano Eruption

[Open access - Original research article](#)

[Pages 361-369](#)

[Estuning Tyas Wulan Mei, Alia Fajarwati, Surani Hasanati, Ifa Meilyana Sari](#)

[Download PDF](#)

[Article preview](#)

50.



The Productive and Reproductive Activities of Women as Form of Adaptation and Post-disaster Livelihood Strategies in Huntap Kuwang and Huntap Plosokerep

[Open access - Original research article](#)

[Pages 370-377](#)

[Alia Fajarwati, Estuning Tyas Wulan Mei, Surani Hasanati, Ifa Meilyana Sari](#)

[Download PDF](#)

[Article preview](#)

51.



Flood-prone Areas Mapping at Semarang City by Using Simple Additive Weighting Method

[Open access - Original research article](#)

[Pages 378-386](#)

[Rizka Ella Setyani, Ragil Saputra](#)

[Download PDF](#)
[Article preview](#)

52.

Community Resilience: Learning from Mt Merapi Eruption 2010
Open access - Original research article
Pages 387-394
M. Bobby Rahman, Isye Susana Nurhasanah, Sutopo Purwo Nugroho
[Download PDF](#)
[Article preview](#)

53.

Participatory Mapping for Urban Fire Risk Reduction in High-density Urban Settlement
Open access - Original research article
Pages 395-401
Dian Rahmawati, Adjie Pamungkas, Belinda Ulfa Aulia, Kesumaning Dyah Larasati, ... Abdiel Hardwin Dito
[Download PDF](#)
[Article preview](#)

54.

A Conceptual Framework of Volcanic Evacuation Simulation of Merapi Using Agent-based Model and GIS
Open access - Original research article
Pages 402-409
Jumadi, Steve Carver, Duncan Quincey
[Download PDF](#)
[Article preview](#)

55.

Estimation on the Increasing Value of CO Based on the Vehicle Growth in Surabaya
Open access - Original research article
Pages 410-416
Siti Anugrah Mulya Putri Ofrial, Ervina Ahyudanari, Arie Dipareza Syafei
[Download PDF](#)
[Article preview](#)

56.

Willingness to Pay for Climate Change Mitigation: Application on Big Cities in Central Java, Indonesia
Open access - Original research article
Pages 417-423
Evi Gravitaniani, Suryanto, Ernoiz Antriyandari
[Download PDF](#)
[Article preview](#)

57.

A Comparative Study of Climate Change Mitigation and Adaptation on Flood Management between Ayutthaya City (Thailand) and Samarinda City (Indonesia)
Open access - Original research article
Pages 424-429
Achmad Ghozali, Ariyaningsih, Riyan Benny Sukmara, Belinda Ulfa Aulia
[Download PDF](#)
[Article preview](#)

58.

Green Line Strategy in Mitigating Climate Change: Case Study in Tarakan City, North Kalimantan

Open access - Original research article
Pages 430-434
Sulistya Rini Pratiwi
Download PDF
Article preview

59.

Dual Mitigation System: Database System Combination of EWS and APRS for Disaster Management (Case Study: Malang Southern Coast)

Open access - Original research article
Pages 435-441
Aji Kusumaning Asri, Herfina Elya, Novita Duantari, Enira Suryaningsih, Leryan Dona Dony Donovan Victoria
Download PDF
Article preview

60.

Settlement Arrangement Based on Landslide Mitigation (Case Study: Capagallung, West Bacukiki District, City of Parepare)

Open access - Original research article
Pages 442-450
Jayanti Mandasari, Mimi Arifin, Mukti Ali
Download PDF
Article preview

61.

Spiritual Phenomena in the Town of Demak

Open access - Original research article
Pages 451-457
Marwoto
Download PDF
Article preview

62.

Role of Culture in Rural Transformation in Manding Village, Bantul Yogyakarta, Indonesia

Open access - Original research article
Pages 458-464
Anna Pudianti, Joesron Alie Syahbana, Atiek Suprapti
Download PDF
Article preview

63.

Shared-power Governance in Managing Common Pool Resources Case Study: Collaborative Planning to Manage Thematic Parks in Bandung City, Indonesia

Open access - Original research article
Pages 465-476
Zainab Nururrohmah, Suhirman
Download PDF
Article preview

64.

Adaptation of Social-economic Livelihoods in Coastal Community: The Case of Mangunharjo Sub-District, Semarang City

Open access - Original research article
Pages 477-484
Wawargita Permata Wijayanti, Rahmat Aris Pratomo

[Download PDF](#)
[Article preview](#)

65.

Identification of Specific Characteristic of Kampung Jayengan as Community-based Industrial Tourism

Open access - Original research article

Pages 485-492

Winy Astuti, Qomarun, Alpha Febela, Rufia A. Putri, Dyah Widi Astuti

[Download PDF](#)

[Article preview](#)

66.

Increasing Community Knowledge of Planning Process and Online Musrenbang Process in Rungkut District Surabaya

Open access - Original research article

Pages 493-497

Hertiari Idajati, Adjie Pamungkas, S. Vely Kukinul, Umami Fadlillah, ... Karina Pradinie

[Download PDF](#)

[Article preview](#)

67.

Factors Influencing Community-based Heritage Sustainability in Kampung Kemasari, Gresik

Open access - Original research article

Pages 498-502

Rima Dewi Supriharjo, Dian Rahmawati, Eko Budi Santoso, Rulli Pratiwi Setiawan, Karina Pradinie

[Download PDF](#)

[Article preview](#)

68.

Improvement of Involvement Society in the Context of Smart Community for Cultural Heritage Preservation in Singosari

Open access - Original research article

Pages 503-506

Fendy Firmansyah, K. Umami Fadlillah

[Download PDF](#)

[Article preview](#)

69.

Ambiguous Public Space Towards Social Sustainability in Madurese Urban Kampong

Open access - Original research article

Pages 507-514

Ardy Maulidy Navastara, Karina Pradinie, K.D. Erli Martha

[Download PDF](#)

[Article preview](#)

70.

The Level of Participation in Mangrove Ecotourism Development, Wonorejo Surabaya

Open access - Original research article

Pages 515-520

Hertiari Idajati, Adjie Pamungkas, S. Vely Kukinul

[Download PDF](#)

[Article preview](#)

71.

Figuring the Happiness of Poor Communities in Malang City: Measuring the Outcome of Slum and Squatter Areas

Open access - Original research article
Pages 521-529
Wulan Dwi Purnamasari, Deni Agus Setyono, Imas Dayana
[Download PDF](#)
[Article preview](#)

72.

Evaluation of Indonesia Road Safety Campaigns (RUNK)

Open access - Original research article
Pages 530-535
Hera Widyastuti, Istiara, Russel G. Thompson, Richard Tay, ... Aldila Riana Prabawati
[Download PDF](#)
[Article preview](#)

73.

Community Capacity in Providing Neighborhood Unit-scale Social Infrastructure in Supporting Surakarta Child Friendly

Open access - Original research article
Pages 536-544
Rufia Andisetyana Putri, Winny Astuti, Murtanti Jani Rahayu
[Download PDF](#)
[Article preview](#)

74.

The Important Role of Science and Technology Park towards Indonesia as a Highly Competitive and Innovative Nation

Open access - Original research article
Pages 545-552
Zulfika Satria Kusharsanto, Luky Pradita
[Download PDF](#)
[Article preview](#)

75.

Patterns of Landscape Change on Small Islands: A Case of Gili Matra Islands, Marine Tourism Park, Indonesia

Open access - Original research article
Pages 553-559
Fery Kurniawan, Luky Adrianto, Dietriech G. Bengen, Lilik Budi Prasetyo
[Download PDF](#)
[Article preview](#)

76.

Redesigning the Traditional Food Kiosk Based on Local Knowledge, Case Study: Siwalankerto District

Open access - Original research article
Pages 560-567
Gunawan Tanuwidjaja, Albert Edwin Wiyono, Ardhian Wibowo, Gregorius Gerry, ... Ridwan Raynaldo
[Download PDF](#)
[Article preview](#)

77.

Spaces of the Elderly Based on the Living Arrangement (Case Study: Banyumanik Public Housing)

Open access - Original research article
Pages 568-573
Wijayanti, Bambang Setioko, Edward Endrianto Pandelaki
[Download PDF](#)
[Article preview](#)

78.

- Study of Distribution and Slope Aspect Approach to Increase Public Green Open Space on Special Capital Region of Jakarta Using High Resolution Imagery
Open access - Original research article
Pages 574-582
Arista Nurbaya, Alinda F.M. Zain, Ruchyat Deni Djakapermana
Download PDF
Article preview
79.
- Biodiversity as Part of Urban Green Network System Planning Case Study: Pontianak City
Open access - Original research article
Pages 583-586
Yudithya Ratih, Jockie Zudhi Febrianto
Download PDF
Article preview
80.
- Convenience Component of Walkability in Malang City Case Study the Street Corridors Around City Squares
Open access - Original research article
Pages 587-592
Winansih Erna, Antariksa, Surjono, Setyo Leksono Amin
Download PDF
Article preview
81.
- S.M.A.R.T. Eco-village for Hazardous Coastal Area in Bedono Village, Demak Regency
Open access - Original research article
Pages 593-600
Novia Sari Ristianti
Download PDF
Article preview
82.
- The Urban Heritage of Masjid Sunan Ampel Surabaya, toward the Intelligent Urbanism Development
Open access - Original research article
Pages 601-608
Atiek Suprapti Budiarto, Indriastjario, Agung Budi Sardjono
Download PDF
Article preview
83.
- Architecture Metabolism Approach Which Integrates the Concept Magersari in Supporting Balanced Development with Green Agricultural Land in Suburbs
Open access - Original research article
Pages 609-616
Aldrin Yusuf Firmansyah
Download PDF
Article preview
84.
- Green Infrastructure Development in Cisangkuy Subwatershed, Bandung Regency: Potential and Problems
Open access - Original research article
Pages 617-622
Sri Maryati, An Nisaa Siti Humaira, Putri Adianti
Download PDF

Article preview

85. [A Communicative City as a Preliminary Step towards a Technopolis Agenda](#)
Open access - Original research article
Pages 623-629
Ridwan Sutriadi
[Download PDF](#)
[Article preview](#)
86. [Smart Green Open Space Outlook: Pattern Identification \(Case Study: Yogyakarta City and Batu City\)](#)
Open access - Original research article
Pages 630-636
Emmy Yuniarti Rusadi, Pebri Nurhayati, Amandus Jong Tallo, Bakti Setiawan
[Download PDF](#)
[Article preview](#)
87. [The Growth of Rest Area at the Development Axis in the Southern Part of West Java](#)
Open access - Original research article
Pages 637-641
Heru Purboyo, Eko Budi Santoso
[Download PDF](#)
[Article preview](#)
88. [Urban Heritage Towards Creative-based Tourism in the Urban Settlement of Kauman - Surakarta](#)
Open access - Original research article
Pages 642-649
Wiwik Setyaningsih, Wiendu Nuryanti, Budi Prayitno, Ahmad Sarwadi
[Download PDF](#)
[Article preview](#)
89. [Tourism Development of Historical Riverbanks in Jatinom Village](#)
Open access - Original research article
Pages 650-655
Rini Hidayati, Sudaryono, Djoko Wijono, Budi Prayitno
[Download PDF](#)
[Article preview](#)
90. [Edu – Religious Tourism Based on Islamic Architecture Approach, a Preliminary Research in Majasto Cemetery – Sukoharjo Regency Central Java](#)
Open access - Original research article
Pages 656-663
Indrawati, Sugiono Soetomo, Bambang Setioko, Titin W. Murtini, Nurhasan
[Download PDF](#)
[Article preview](#)
91. [Tourism Destination Planning Strategy: Analysis and Implementation of Marketing City Tour in Bali](#)
Open access - Original research article

Pages 664-670
I. Nyoman Sudiarta, I. Wayan Suardana
[Download PDF](#)
[Article preview](#)

92. Influence Factors on the Development of Creative Industry as Tourism Destination (Case Study: Footwear Village in Mojokerto City)

Open access - Original research article
Pages 671-679
Arsvira Dani Ardhalu, Eko Budi Santoso, Haryo Sulistyarso
[Download PDF](#)
[Article preview](#)

93. Tourism Innovation System (SIDA) in Pringgabaya Based on Sea Waves Energy Development Initiative
- Open access - Original research article
Pages 680-685
Karina Pradinie, Adjie Pamungkas, Hertiari Idajati, Johanes Krisdianto, Defry Agatha Ardianta
[Download PDF](#)
[Article preview](#)

94. The Rapid Assessment for Heritage Area Method (RAFHAM) for Kemas Heritage Area
- Open access - Original research article
Pages 686-692
Rima Dewi Supriharjo, Karina Pradinie, Eko Budi Santoso, Rulli Pratiwi Setiawan, Dian Rahmawati
[Download PDF](#)
[Article preview](#)

95. Who's Own the Public Space?: The Adaptation of Limited Space in Arabic Kampong
- Open access - Original research article
Pages 693-698
Karina Pradinie, Ardy Maulidy Navastara, K.D. Erli Martha
[Download PDF](#)
[Article preview](#)

96. The Rapid Assesment Using RAFHAM Method in Singosari, Malang Regency (Kabupaten Malang)
- Open access - Original research article
Pages 699-703
K. Umami Fadlilah, Ardy Maulidy Navastara, T. Karina Pradinie, Surya Hadi Kusuma
[Download PDF](#)
[Article preview](#)

97. Formulation of Mangrove Ecosystem Management Model Based on Eco-minawisata in the Coastal Sinjai, South Sulawesi
- Open access - Original research article
Pages 704-711
Ema Umilia, Asbar
[Download PDF](#)
[Article preview](#)

98. 

The Changing Function of Heritage Building for Rolling Tourism Planning Progress

Open access - Original research article

Pages 712-719

Edy Darmawan, Adhisti Samsinar Enis

[Download PDF](#)

[Article preview](#)

99. 

Conservation of Underground Water with the Ecosystem Approach to the Development of the New Towns in Bogor, Tangerang, Bekasi (Botabek) Region

Open access - Original research article

Pages 720-727

Parino Rahardjo, Djoko. M. Hartono, Emirhadi Suganda, Hadi Susilo Arifin

[Download PDF](#)

[Article preview](#)

100. 

The Effect of Urbanization on Road Energy Consumption and CO₂ Emissions in Emerging Megacity of Jakarta, Indonesia

Open access - Original research article

Pages 728-737

Ahyahudin Sodri, Iwa Garniwa

[Download PDF](#)

[Article preview](#)

[Previous](#) [page 1 of 2](#) [Next](#)

ISSN: 1877-0428

Copyright © 2018 Elsevier Ltd. All rights reserved

[About ScienceDirect](#) [Remote access](#) [Shopping cart](#) [Contact and support](#) [Terms and conditions](#) [Privacy policy](#)

Cookies are used by this site. For more information, visit the [cookies page](#).

Copyright © 2018 Elsevier B.V. or its licensors or contributors. ScienceDirect® is a registered trademark of Elsevier B.V.

**RUN-DOWN FOR
CITIES INTERNATIONAL CONFERENCE**

NOVOTEL HOTEL SURABAYA

NOVEMBER 3rd – 4th 2015

Day One, Tuesday, 3rd NOVEMBER 2015

WELCOME TO CITIES INTERNATIONAL CONFERENCE

07.00-08.00	: Registration of the Participants
08.00-09.00	: Opening ceremony a). <i>Traditional Dance Performance (20')</i> b). <i>Invocation (5')</i> c). Adjie Pamungkas., ST., M.Dev.Plg, Ph.D Head of Urban and Regional Planning (5') (Introduction about the organization & Cities year to year) d). Prof. Joni Hermana, Ir.,MScES., Phd (5'-10') (Welcoming audience & official opening of the event)
09.00-09.30	: Keynote speakers “ Surabaya as SMART CITIES ” “ Accomplishment and the best practices ” Dr. (Hc) Ir.Tri Rismaharini., MT Surabaya City's Former Mayor
09.30-09.45	: Coffee Break
09.45-10.15	: Session 1 “ The Complexities of Urban Policy Method Development ” Prof. Budi Santoso Wirjodirdjo
10.15-11.15	: Session 2 “ The Biodiversity Sensitive Urban Design ” Ass. Prof. Sarah Bekessy Leader of Center of Excellence For Environmental Decision RMIT University –Australia

11.15-12.00	: Session 3 "~~~~~" (Tentative) Prof. Ahmad Nazri B. Muhammad Ludin., Ph.d Center of Innovative Planning and Development –UTM Malaysia
12.00-13.00	: Break (Lunch)
13.00-16.00	: The conference – Panel Room : The Networking (Airlangga room)
16.00-16.30	: Action Plan Recommendation For Smart Cities <i>The formulation of action plans recommendation toward smart cities, where the recommendation came from what we have discussed during the conference.</i>
16.30-17.00	: Certificates Resignation to the participants and Sharing experience or opinion regarding the conference
17.00-17.30	: Closing Ceremonies
Day Two, Wednesday, 4th NOVEMBER 2015	
WORKSHOP DAY	
07.00-08.30	: Registration & Mobilization to Venue
08.30-10.00	: WORKSHOP I-II-III and IV
10.00-10.15	: Ice & Tea Break
10.15-12.00	: WORKSHOP I-II-III and IV
12.00-13.00	: Break (Lunch)
13.00-15.00	: Discussion & Dissemination Of Laboratory Work
15.00-15.15	: Closing Ceremonies

Cities International Conference
"Intelligent Planning Towards Smart Cities"
Presentation of Paper
3rd November 2015

1. The time allocated for each presentation is 10 minutes.
2. After five presenter finishing his presentation, there will be a question and answer session for 10 minutes. Likewise onwards.
3. To maintain the timeliness of the presentation, the bell will ring three times to remind the presenter about the availability of time
 - First Ring: Remaining the time of presentation at the 7th minute.
 - Second Ring : Remaining the time of presentation at the 9th minute
 - 1 minute remaining will be used to sign the agenda presenter by the moderator, and the turn of the session to the next presenter.
 - In the question and answer session the bell will ring at the 8th and 10th minute to indicate the time allocation of discussions.
4. It is an obligation for each presenter to obey a predetermined time.
5. Timekeeper will carefully observe the allocated time for each presenter.



" List of Participants in Panel 1" - Brawijaya 1 Hall

Moderator : Cahyono Susetyo

No	Schedule	Name	ID Code	Title
1	13.00-13.09	Supriatna, L., Supriatna, J., Koestoer, R.H. Takarina, N.D.	A115	Spatial Dynamics Model for Sustainability Landscape in Cimandiri Estuary, West Java
2	13.10-13.19	Diah Intan Kusumo Dewi, Anita Ratnasari R, Pangi	A139	Land Use Change in Sub District Mranggen because of Residential Development
3	13.20-13.29	AR. Rohman Taufiq Hidayat	A153	Challenge and Opportunity of Settlement and Infrastructure Development in the Small Island, Case Study: Pulau Laut Kelautan District, Kotabaru Regency
4	13.30-13.39	Rr. Ulfia Surya Kartika, Ervina Ahyudanari	A156	Analysis Of The Possible Use Of Park And Ride Tram And Monorail to Facilitate The Passenger of Juanda International Airport Based on Sub-District in Surabaya, Indonesia
5	13.40-13.49	Muhammad Ali, Setia Hadi, Bambang Sulistyantara	A176	Study On Land Cover Change Of Ciliwung Lower Stream Watershed
Question and Answer Session- 13.50-13.59				
6	14.00-14.09	Heri Sutanta, Trias Aditya, Retno Astrini	A168	Smart City and Geospatial Information Availability, Current Status in Indonesian Cities
7	14.10-14.19	Evan Buwana, Hayati Sari Hasibuan, Chairil Abdini	A04	Alternatives Selection for Sustainable Transportation System In Kasongan City
8	14.20-14.29	Emmy Yuniarti Rusadi, Pebri Nurhayati, Amandus Jong Tallo, Bakti Setiawan	A116	Smart City Modelling on Green Open Space: Case Study Yogyakarta City and Batu City
9	14.30-14.39	I Made Brunner	A118	Prediction of Urban Growth Using the Bucket Model
10	14.40-14.49	Purwanto, Dwiyono Hari Utomo, Bharadhian Rizki Kurniawan	A123	Spatio Temporal Analysis Trend of Land Use and Land Cover Change Against Temperature Based on Remote Sensing Data In Malang City
Question and Answer Session - 14.50-14.59				
11	15.00-15.09	Syaiful Muazir, Horng-Chang Hsieh	A147	(Adaptive) Networks in Strategic Areas in Indonesia
12	15.10-15.19	Herry Santosa, Shinji IKARUGA, Takeshi KOBAYASHI	A154	3D Interactive Simulation System (3DISS) Using Multimedia Application Authoring Platform for Landscape Planning Support System
13	15.20-15.29	Nur Ayu Diana Citra Dewi S.P, Rini Trisno Lestari, Ria Asih Aryani Soemitro, Dwa Desa Warnana	A166	Earthquake Microzonation And Vs,30 Mapping Based On Microtremor Measurement (Case Study In Kaliwates And Sumbersari Sub-District, Jember Regency)
14	15.30-15.39	Rizka Ella Setyani, Ragil Saputra	A175	Flood-prone Areas Mapping at Semarang City by Using Simple Additive Weighting Method
15	15.40-15.49	Atik Nurwanda, Alinda Fitriany Malik Zain, Ernan Rustiadi	A209	Analysis of Land Cover Changes and Landscape Fragmentation in Batanghari Regency, Jambi Province
Question and Answer Session - 14.50-14.59				
16	16.00-16.09	Karda D. Yayat, Boy Kombaitan, Pradono, Heru Purboyo HP	A179	Towards Traffic Impact Analysis Model for Indonesia Case Study Trans Studio Mall
17	16.10-16.19	Yanti Budiyantini, Vidya Pratiwi	A186	Peri-urban Typology of Bandung Metropolitan Area
18	16.20-16.29	Deni Agus Setyono, Denny Dwi Cahyono & Masdar Helmy	A198	Measuring Service Capacity of Public Facilities based on Supply Aspect Case Study: Elementary School in Malang City
19	16.30-16.39	Yoanita Eka Rahayu, Ervina Ahyudanari, Nursakti Adhi Pratomoatmojob	A151	Unplanned Land Use Development and Its Impact on Airport Access Road
Question and Answer Session - 16.40-16.49				

" List of Participants in Panel 2" - Brawijaya 2 Hall

Moderator : Hertiaridajati

No	Schedule	Name	ID Code	Title
1	13.00-13.09	Fery Kurniawan, Luky Adrianto, Dietrich G. Bengen, Lilik Budi Prasetyo	A110	Patterns of landscape change on small islands: A case of Gili Matra Islands, Marine Tourism Park, Indonesia
2	13.10-13.19	Julia Dewi, Uras Siahaan, Rumiati R.Tobing	A125	Parametric Simulation as a Tool for Observing Relationships between Parcel and Regulations in Unplanned Commercial Corridor
3	13.20-13.29	Dina Poerwoningsih, Antariksa Sudikno, Amin Setyo Leksono, Abdul Wahid Hasyim	A217	Integrating Visibility Analysis in Rural Spatial Planning
4	13.30-13.39	Siti Anugrah Mulya Putri Ofrial, Ervina Ahyudanari, Arie Dipareza Syafei	A171	Estimation on the increasing value of CO based on the vehicle growth in Surabaya
5	13.40-13.49	Daniel Hary Prasetyo, Jamilah Mohamad, Rosmadi Fauzi	A128	Discovering Public Preferences for School Location in Surabaya
Question and Answer Session - 13.50-13.59				
6	14.00-14.09	Patricia Pahlevi Noviandri, S.T., M.Eng	A119	Apartment Planning Concept in Settlement Area of Sleman District, D.I. Yogyakarta (Case Study: H Residence Plemburan Hinggil Apartment)
7	14.10-14.19	Ratriana Said Bunawardi, Yoshihiro Suzuki, Yuasa Hiroki	A145	Diversity and Utilization of Public Space in Rusunawa Mariso, Makassar – Indonesia
8	14.20-14.29	Venny Veronica Natalia, Shirley Wunas	A148	Housing Development: Sign and Symptoms in Middle City of Indonesia
9	14.30-14.39	Estuning Tyas Wulan Mei, Alia Fajarwati, Surani Hasanati, Ifa Meilyana Sari	A170	Resettlement Following the 2010 Merapi Volcano Eruption
10	14.40-14.49	Emi Setyowati, Hendro Trilistyo	A191	Sustainable Building Material for Noisy Urban Residential Space
Question and Answer Session - 14.50-14.59				
11	15.00-15.09	Wijayanti, Bambang Setioko, Edward Endrianto Pandelaki	A200	Spaces of The Elderly based on the Living Arrangement (Case Study: Banyumanik Public Housing)
12	15.10-15.19	Dhimas Bayu Anindito, Ridwan Sutriadi	A126	Towards a Just City in Information Era: Understanding the Inclusiveness of Community Network Induced by Telecommunication Technology at the Local Level
13	15.20-15.29	Pindo Tutuko, Zhenjiang Shen	A228	The Effect of Land Use Zonings on Housing Development: The introduction of CDL approach in the border area of Surabaya and Sidoarjo Regency, Indonesia
14	15.30-15.39	Marwoto	A117	Spiritual Phenomena in the Town of Demak
15	15.40-15.49	Wido Prananing Tyas	A180	Home-based Enterprise Approach for Post Disaster Housing: Learnt from Post Disaster Redevelopment Programme in Developing Countries
Question and Answer Session - 14.50-14.59				
16	16.00-16.09	Maryono, Holi Bina Wijaya, Widjonarko, Pangi	A136	Energy Resilience Assessment By Using SEM Approach in the Central Java Province of Indonesia
17	16.10-16.19	Novia Sari Ristianti, ST, MT	A195	S.M.A.R.T Eco Village For Hazardous Coastal Area In Bedono Village, Demak Regency
18	16.20-16.29	Parfi Khadiyanta	A222	Housing Alteration In Degrading Settlement Location
Question and Answer Session - 16.30-16.39				

" List of Participants in Panel 3" - Brawijaya 3 Hall
Moderator : Ardy Maulidya

No	Schedule	Name	ID Code	Title
1	13.00-13.09	Anna Pudianti, Joesron Alie Syahbana and Atiek Suprapti	A124	Role of Culture in Rural Transformation in Manding Village, Bantul Yogyakarta, Indonesia
2	13.10-13.19	Murtanti JR, Rufia AP, Isti Andini	A143	Typology Of Urban Hawkers Location Preferences
3	13.20-13.29	Alia Fajarwati, Estuning Mei, Surani Hasanati, Ifa Meilyana Sari	A174	The Productive and Reproductive Activities of Women as Form of Adaptation and Post-Disaster Livelihood Strategies in Huntap Kuwang and Huntap Plosokerep
4	13.30-13.39	Uly Faoziyah	A177	Modelling of Suramadu Bridge Construction, Who Benefited?
5	13.40-13.49	Uly Faoziyah	A178	Proliferation Pattern in Underdeveloped Region: Is it the Real Solution to Solve Underdeveloped Region's Problem in Decentralized Indonesia?
Question and Answer Session - 13.50-13.59				
6	14.00-14.09	Mas Bobby Rahman, Isye Susana Nurhasanah, Sutopo Purwo Nugroho	A223	Community Resilience: Learning From Merapi Eruption 2010
7	14.10-14.19	Aji Kusumaning, Herfina Elya, Novita Duantari, Enira Suryaningsih, Leryan Dona Dony Donovan Victoria	A138	Dual Mitigation System: Database System Combination of EWS and APRS for Disaster Management (Case Study: Malang Southern Coast)
8	14.20-14.29	Wawargita Permata Wijayanti, Rahmat Aris Pratomo	A157	Adaptation of social-economic livelihoods in coastal community (case study: Mungunharjo sub-district, Semarang and Gununganyar Tambak sub-district, Surabaya)
9	14.30-14.39	Yudithya Ratih, Jockie Zudhi Febrianto	A204	Biodiversity as a Part of Urban Green Network System Planning Case Study : Pontianak City
10	14.40-14.49	Teti A Argo, Shinta Prabonno, Prima Singgih	A229	Youth Participation in Urban Environmental Planning through Augmented Reality Learning: the Case of Bandung City, Indonesia
Question and Answer Session - 14.50-14.59				
11	15.00-15.09	Andi Renald, Priyono Tjiptoherijanto, Emirhadi Suganda, Ruchyat Deni Djakapermana	A01	Toward Resilient and Sustainable City Adaptation Model for Flood Disaster Prone City (Case Study of Jakarta Capital Region)
12	15.10-15.19	Kahar Sunoko, Josef Prijotomo, V. Totok Noerwasito	A122	Reuse Ruins Building Materials in Vernacular Architecture as Post-Earthquake Reconstruction Method in Bantul
13	15.20-15.29	Jumadi, Steve Carver, Duncan Quincey	A130	A Conceptual Framework of Volcanic Evacuation Simulation of Merapi Using Agent-based Model and GIS
14	15.30-15.39	Sulistya Rini Pratiwi	A137	Green Line Strategy to Reduce Air Pollution (Timbale/Pb) With Willingness to Pay In Tarakan City
15	15.40-15.49	Artiningsih, Jawoto Sih Setyono, Rizki Kirana Yuniartanti	A152	The Challenges of Disaster Governance in an Indonesian Multi-Hazards City: a Case of Semarang, Central Java
Question and Answer Session - 14.50-14.59				
16	16.00-16.09	Jayanti Mandasari, Mimi Arifin, Mukti Ali	A192	Settlement Arrangement Based On Landslide Mitigation (Case Study: Capagallung, West Bacukiki District, City Of Parepare)
17	16.10-16.19	Arista Nurbaya, Alinda FM Zain, Ruchyat Deni Dj.	A201	Study Of Distribution And Slope Aspect Approach To Increase Public Green Open Space On Special Capital Region Of Jakarta Using High Resolution Imagery
18	16.20-16.29	Zainab Nururrohmah, Suhirman	A150	Shared-Power Governance In Managing Common Pool Resources. Case Study: Collaborative Planning To Manage Thematic Parks In Bandung City, Indonesia
19	16.30-16.39	Wulan Dwi Purnamasari, Deni Agus Setyono, Imas Dayana	A164	Perceiving The Happiness Of Poor Communities In Malang City (Measuring The Outcome Of Slum And Squatters Areas)
Question and Answer Session - 16.40-16.49				

" List of Participants in Panel 4" - Airlangga 1 Hall
Moderator : Dian Rahmawati

No	Schedule	Name	ID Code	Title
1	13.00-13.09	Wiwik Setyaningsih, Wiendu Nuryanti, Budi Prayitno, Ahmad Sarwadi	A134	Urban Heritage towards Creative-Based Tourism in the Urban Settlement of Kauman - Surakarta
2	13.10-13.19	Rini Hidayati, Sudaryono, Djoko Wijono, Budi Prayitno	A155	Tourism Development of Historical Riverbanks in Jatinom Village
3	13.20-13.29	Indrawati, Sugiono Soetomo, Bambang Setioko, Titin W. Murtini	A165	Edu-Religious Tourism Based on Islamic Architecture Approach, a Preliminary Research in Majasto Graveyard-Sukoharjo Regency
4	13.30-13.39	Aldrin Yusuf Firmansyah	A141	Architecture Metabolism Approach Which Integrates The Concept Magersari In Supporting Balanced Development With Green Agricultural Land In Suburbs
5	13.40-13.49	M.Saniroychansyah, Arta Farmawati, Dina Septari Anindyah, Lanthika Atianta	A149	Urban Compactness Effects on the Distribution of Healthy Houses in Yogyakarta City
Question and Answer Session- 13.50-13.59				
6	14.00-14.09	Arifuddin	A194	Cultural and Needs-Based Housing Development Case Study: The Bugis Community in Makassar City
7	14.10-14.19	Winansih, Erna, Antariksa, Surjono, Setyo Leksono Amin	A219	Convenience Component of Walkability in Malang City
8	14.20-14.29	Mahendra Wardhana	A226	Spatial Analysis of Users Movement Pattern and Its Socialization on Public Facilities and Environment through the ESVA
9	14.30-14.39	Zulfika Satria Kusharsanto, Lucky Pradita	A120	The Important Role of Science and Technology Park towards Indonesia as a Highly Competitive and Innovative Nation
10	14.40-14.49	Retno Widjajanti	A140	The Space Utilization by Street Vendors Based on the Location Characteristics in the Education Area of Tembalang, Semarang
Question and Answer Session - 14.50-14.59				
11	15.00-15.09	Evi Gravitiani, Suryanto, Ernoiz Antriyandari	A159	Willingness to pay for Climate Change Mitigation: Application on Big Cities in Central Java, Indonesia
12	15.10-15.19	Gunawan Tanuwidjaja, Ardhan Wibowo, Gregorius Gerry, Lia Margareta Shinata	A112	Redesigning the Traditional Food Kiosk based on Local Knowledge, Case Study: Siwaiankerto District
13	15.20-15.29	Edy Darmawan, Adhisti Samsinar Enis	A06	The Changing Function Of Heritage Building For Rolling Tourism Planning Progress
14	15.30-15.39	I Nyoman Sudiarta, I Wayan Suardana	A197	Tourism Destination Planning Strategy: Analysis And Implementation Of Marketing City Tour In Bali
15	15.40-15.49	Winnie Astuti, Qomarun, Alpha Febela, Rufia A. Putri, Dyah Widi Astuti	A206	Identification Of Specific Characteristics Of Jayengan As Community-Based Industrial Tourism
Question and Answer Session - 14.50-14.59				
16	16.00-16.09	Arsvira Dani Ardhalah, Eko Budi Santoso	A225	Influence Factors on the Development of Creative Industry as Tourism Destination (Case Study: Footwear Village in Mojokerto City)
17	16.10-16.19	Rufia Andisetyana Putri, Winnie Astuti, Murtanti Jani Rahayu	A206	Community Capacity in Providing Neighbourhood Unit-Scale Social Infrastructure in Supporting Surakarta Child Friendly
18	16.20-16.29	Hera Widyastuti, Wahyu Herjanto, Anak Agun Gde Kartika, Budi Raaharjo, Wing Kong Chiu, Ratih Sekartaji, Feni Widiyati	A207	Railway Infrastructure to Support Inter-modal Transportation from Port to Hinterland (Case Study-Manyar Port)
19	16.30-16.39	Hera Widyastuti, Istiar, Russel G. Thompson, Richard Tay, Miftahul Huda, Feni Widiyati, Aldila Riana Prabawati	A208	Evaluation of Indonesia Road Safety Campaigns (RUNK)
Question and Answer Session - 16.40-16.49				

" List of Participants in Panel 5" - Airlangga 4 Hall
Moderator : Putu Rudy Setyawan

No	Schedule	Name	ID Code	Title
1	13.00-13.09	Parino Rahardjo, Djoko. M. Hartono, Emir Hadi Suganda, Hadi Susilo Arifin	A108	Conservation of Underground Water with the Ecosystem Approach to the Development of the New Towns in Bogor, Tangerang, Bekasi (Botabek) Region
2	13.10-13.19	A. Purnomo, N. Khairina	A131	Planning Of Decentralised Wastewater Treatment In RW 9 Genteng Subdistrict, Surabaya City
3	13.20-13.29	Alfan Purnomo, Silvana Herrari	A135	Design of wastewater treatment plant in RW 2, Dr.Soetomo Subdistrict, Surabaya City, Indonesia
4	13.30-13.39	Mesi Shinta Dewi, Djoko M. Hartono, Setyo Sarwanto Moersidik, Iwan Kustiwan	A138	Green Housing Evaluation through Carbon Footprint Dynamic Model: Questioned the Urban Policy Sustainability
5	13.40-13.49	Fadilah Rahmawati Wahyudi, Setyo Sarwanto Moersidik	A142	The Analysis of Ground Water Availability and Utility in DKI Jakarta
Question and Answer Session - 13.50-13.59				
6	14.00-14.09	Ahyahudin Sodri, Iwa Garniwa	A184	The Effect of Urbanization on Road Energy Consumption and CO2 Emissions in Emerging Megacity of Jakarta, Indonesia
7	14.10-14.19	Idawarni Asmal, Samsuddin Amin, Mufti Ali	A190	Environmental Sanitation Conditions in The Beba Fish Auction Place (TPI)
8	14.20-14.29	Lina Tri Astuti, Raldi Hendro Koestoer	A196	Green Well-being through the Cities Carrying Capacity: A Special Reference to Bekasi of West Java, Indonesia
9	14.30-14.39	Sri Maryati, An Nisaa Siti Humaira, Putri Adianti	A218	Green Infrastructure Development in Cisangkuy Subwatershed, Bandung Regency: Potential and Problems
10	14.40-14.49	Zainul Hidayah	A114	Planning For Sustainable Small Island Management:Case Study Of Gili Timur Island East Java Province
Question and Answer Session- 14.50-14.59				
11	15.00-15.09	Heru Purboyo, Eko Budi Santoso	A02	The Growth Of Rest Area At The Development Axis In The Southern Part Of West Java
12	15.10-15.19	Batara Surya	A111	The Processes Analysis Of Urbanization, Spatial Articulation, Social Change And Social Capital Difference In The Dynamics Of New Town Development In The Fringe Area Of Makassar City
13	15.20-15.29	Rizki Adriadi Ghiffari, Eko Budi Santoso	A160	Development of Eucalyptus Oil Agro-Industries in Kabupaten Buru
14	15.30-15.39	Atiek Suprapti Budiarto, Joesron Alie Syahbana, Indriastjarjo		The Heritage Area Of Mosque-Tomb Of Sunan Ampel, Toward The Development Of Intelegent Urbanism
15	15.40-15.49	Adipati Rahmat, Nurfitri Syadiah	A187	Smart coastal city: sea pollution awareness for people in surabaya waterfront city
Question and Answer Session- 14.50-14.59				
16	16.00-16.09	Ken Martina Kasikoen	A181	Determination Of Urban Area By Multivariate Analysis (Case Study Cilacap Regency)
17	16.10-16.19	Darmawan Listya Cahya	A210	Analysis Of Urban Agricultural Sustainability In Metropolitan Jakarta
18	16.20-16.29	Asnelly Ridna Daulay, Eka Intan KP, Baba Barusb, Bambang Pramudya N	A229	Identification Of Rice Land Converted Into Plantation Crop And Challenges On Sustainable Land Use System In The East Tanjung Jabung
19	16.30-16.39	Abdul Rahmat	A107	Poor Family Income Improvement Through Community Fishermen In Dried Fish Marine Sector In The Village Moluo Kwandang Sub District North Gorontalo
Question and Answer Session - 16.40-16.49				



CERTIFICATE

this certificate is awarded to

GUNAWAN TANUWIDJAJA

in recognition of his/her valuable participation as

PRESENTER

Paper Title

Redesigning the Traditional Food Kiosk based on Local Knowledge, Case Study: Siwalankerto District

in the event of

CITIES International Conference and Workshop
Intelligent Planning Towards Smart Cities

3-4 November 2015
Novotel Hotel, Surabaya, INDONESIA



Adjie Pamungkas, ST, M.Dev.Plg., Ph.D
Head of Urban and Regional
Planning Department
Sepuluh Nopember Institute of Technology



Nursakti Adhi Pratomoatmojo, ST.,MSc.
Chair of CITIES 2015
Urban and Regional Planning Department
Sepuluh Nopember Institute of Technology



Organized by
Urban and Regional Planning Department
Sepuluh Nopember Institute of Technology, INDONESIA

Redesigning the Traditional Food Kiosk based on Local Knowledge, Case Study: Siwalankerto District

Gunawan Tanuwidjaja^a1, Ardhian Wibowo^b, Gregorius Gerry^b, Lia Margareta Shinata^b

^aArchitecture Program Study, Petra Christian University, Jl. Siwalankerto 121-131, 60236, Surabaya, Indonesia,

^bStudents of Architecture Program Study, Petra Christian University, Jl. Siwalankerto 121-131, 60236, Surabaya, Indonesia,

Abstract

Siwalankerto Sub-District in Surabaya. Siwalankerto was developed rapidly, influenced by educational facilities development. This further created a demand for sustainable food markets/ food kiosk. On the other hand, the unregulated development of traditional food hawkers along the Siwalankerto road existed. Therefore, Architecture Program Study, Petra University proposed a redesigning strategy for the food kiosks in Siwalankerto Sub-district. The strategy not only would provide healthy-affordable foods for all Siwalankerto's residents, but also would generate income for residents with entrepreneurship and culinary skills.

The literatures reviews on sustainable neighborhood, commercial provision, food production and inclusive design were conducted. Furthermore, observations and interviews were conducted to meatball-selling restaurant and food hawker. Secondly, the locational analysis was conducted to determine possible food kioks. Additionally, the participatory design was conducted based on inclusive design principles.

The seven (7) food kiosk proposed for Siwalankerto would be proposed in the area. The designs would be developed from a typology of food kiosk design (3m-by-3m module). The food kiosk was designed considering the person with disability, such as: wheel chair users, crutch users and persons with vision disability. On the other hand, the layout were designed with proper kitchen and accessible toilet design. Lastly, the culture exploration could also enriched the functional design such as the food kiosk.

© 2015 The Authors.

Peer-review under responsibility of the Cities International Conference Committee.

Keywords: Sustainable and affordable hospital, participatory design, local material,

1. Introduction

Siwalankerto was a Sub-District in Surabaya. Siwalankerto was developed rapidly, influenced by internal activities such as: Petra Christian University and St. Carolus Catholic Secondary School. It was also affected by surrounding external activities, such as development of public and governmental, commercial and services buildings in Ahmad Yani Corridor and Jemur Andayani-Kendangsari Corridor. Lastly, it received impact from the development of Surabaya Industrial Estate in Rungkut (SIER). The locational analysis, zoning analysis and commercial – educational facilities survey were conducted by Poerbantanoë (2008)ⁱ. All those activities created the rapid growth of settlements as shown in Table 1.

The educational facilities development and rapid population growth in the Siwalankerto District created a demand for sustainable food markets/ food kiosk. On the other hand, the limited commercial facilities caused unregulated development of trading facilities such as: traditional food hawkers along the Siwalankerto road and other small roads. Because of rising number of food hawkers in, Architecture Program Study, Petra University proposed a redesigning strategy for the food kiosks in Siwalankerto Sub-district. The strategy not only would provide healthy-affordable foods for all Siwalankerto's residents, but also would generate income for residents with entrepreneurship and culinary skills.

* Corresponding author. Tel.: +062-081-221-220-842
E-mail address: gunteitb2012@gmail.com

Table 1 The Population Growth of Siwalankerto Sub-district and Surrounding Areas

Sub-District	Area (Ha)	Population Number (Persons)					Population Growth (Persons/Year)	Percentage of Annual Population Growth (%)
		2004	2005	2006	2007	2008		
Kutisari	53.72	4885	4973	5054	5139	5224	85	1.66
Jemur Wonosari	26.81	3272	3273	3333	3362	3378	26	0.79
Siwalankerto	175.08	14712	15039	15047	15086	16011	325	2.09
Dukuh Menanggal	83.09	4372	4388	4424	4431	4451	20	0.44

Source: Siwalankerto Subdistrict Data quoted in Poerbantaoe (2008)ⁱⁱ.

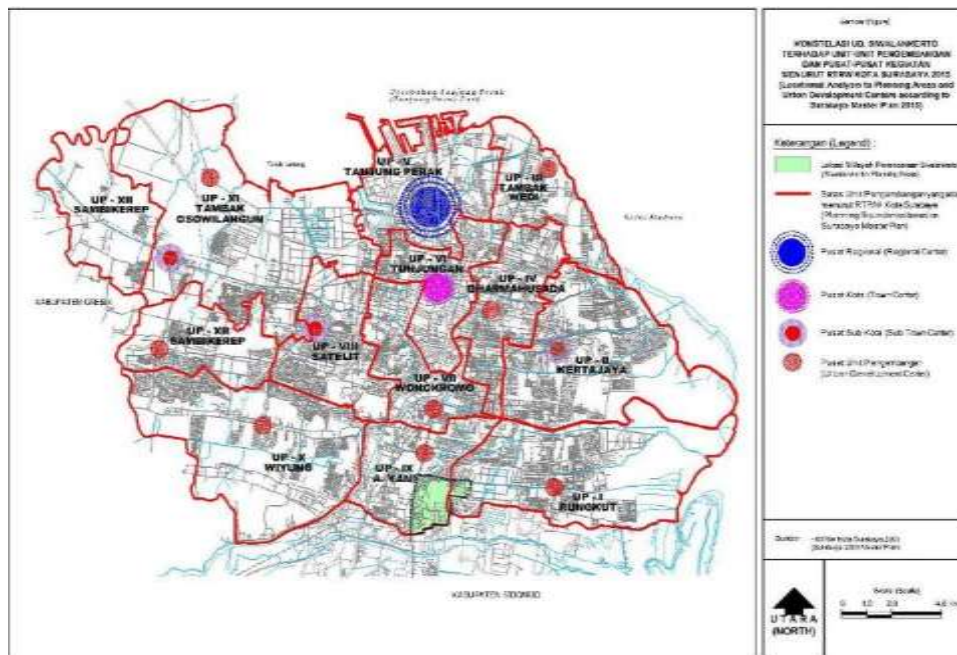


Figure 1 The Context of Siwalankerto in Surabaya (Sources: Surabaya Master Plan 2005, quoted in Poerbantaoe, 2008)ⁱⁱⁱ.

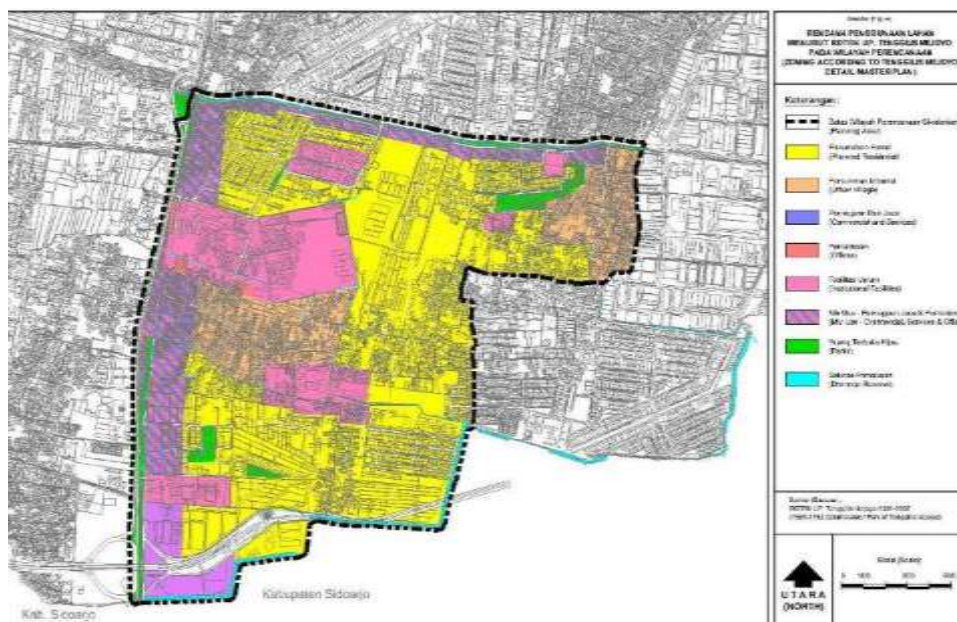


Figure 2 The Detail Master Plan of Tenggilis Mejoyo 1991 – 1992 (including the Siwalankerto District) (Source: 1991-1992 Tenggilis Mejoyo Detail Master Plan, quoted in Poerbantaoe, 2008)^{iv}.

Meanwhile, further literature reviews [Le Corbusier (1973), Calthorpe (2004) in Watson et.al. (2004), Bhatt, & Rybczynski (2004) in Watson et.al. (2004), Jacobs, (1961), Garvin, (2002)] were conducted to prescribe the feasible food kiosk revitalization strategy.

Le Corbusier, (1973)^v stated the four functions of urban development such as inhabiting, working, recreation (in leisure time), and circulation. So, food kiosk was so important because of supporting the inhabiting, working and also recreation.

Ideally the Transit Oriented Development should be adopted in the sustainable sub-district development such as Siwalankerto. Calthorpe, (2004), in Watson, et al. ed). (2004)^{vi} recommended The Transit-Oriented Development (TOD) concept for the sustainable areas. The TOD was proposed with a moderate and high-density housing, equipped with public buildings, workplaces, retail and services. The development was concentrated in mixed-use developments at strategic points along the regional transit system, based on several principles, like:

- organize growth on a regional level to be compact and transit supportive.
- place commercial, housing, jobs, parks, and civic uses within walking distance of transit stops.
- create pedestrian-friendly street networks that directly connect local destinations.
- provide a mix of housing types, densities, and costs.
- preserve sensitive habitat, riparian zones, and high quality open space.
- make public spaces the focus of building orientation and neighborhood activity.
- encourage infill and redevelopment along transit corridors within existing neighborhoods.

On the other hand, Siwalankerto had been developed informally such as described by Bhatt, & Rybczynski, (2004), in Watson, et.al., (ed). (2004).^{vii} Bhatt, & Rybczynski explained the informal development process in the developing countries. The process was started with provision of “sites and services”, locating small land plots (built areas) along the roads (corridor development). On the other hand, many activities could be found in the built areas such as: house extensions, trees, access streets, workplaces, public structures, small shops and vehicles.

Workplaces according Bhatt & Rybczynski were easily found in the squatter settlements. The term “informal sector” described this phenomenon. The urban poor often provided self-built inexpensive, appropriate shelter, and also created their own economic activities. Some activities were, construction materials productions, cottage industries, etc. These informal workplaces were characterized by simple hand tools and primitive, without water nor electricity. As a result, they were mobile, movable in a fixed enclosure.

Bhatt & Rybczynski also revealed the presence of the small shops in the informal settlements, in addition to formal markets or public shopping streets. They were extremely small-sized, exclusive for local needs, and mixed in the living areas. The shops were often found next to streets with the exposures to passersby such as: along main streets, around squares and open spaces, at street corners, and least desirably, along smaller streets. And they were very vital for income generations, and goods distributors of local resources. The tea-shops were also found as the neighborhood meeting places and informal social centers.

Jacobs (1961)^{viii} also agreed to generate sustainable district with diversity. The four principles suggested were:

1. The district, and its parts should serve more than two functions. This strategy should ensure the many visitors on different schedules, for different purposes, but able to use many common facilities.
2. Most blocks must be shorter and facilitating corners development.
3. The district must consist of mixed (in age and condition) buildings that vary in age and condition.
4. There must be a sufficient residential density.

An important realistic planning approach was prescribed by Garvin, (2002).^{ix} Garvin recommended planning process to deal with public action and the private market reaction. Planners should collaborate civic leaders, interest groups, community organizations, property owners, developers, bankers, lawyers, architects, engineers, elected and appointed public officials. Therefore, planners must concentrate on increasing the chances that all parties agenda to be successful.

Food hawker design should be design with consideration of sustainable feeding strategy, food production, food processing and consumption. Furthermore, the food production consumption would affect also the harmonious relationship ecosystems and human cultures (Susanto & Suparlan, 1989^x and Afifah 2005).^{xi}

Lastly, Inclusive Design were defined as the design of products and / or services that can be accessed and used by as many people as possible. The process should be applied with a holistic approach and adaptive enough (<http://www-edc.eng.cam.ac.uk / betterdesign/>).^{xiii} And the design should facilitate the inclusion of each user with a wide range of social backgrounds - economic in Surabaya. The seven principles were (<http://www.universaldesign.ie/exploreampdiscover/the7principles>)^{xiii} were:

1. Equitable Use
2. Flexibility in use
3. Simple and Intuitive Use
4. Perceptible Information
5. Tolerance for Error
6. Low Physical Effort
7. Size and Space for Approach and Use

All the literature reviews above actually supported the proper informal design with street-food-hawker design in street corridors of Siwalankerto.

2. Methods

The literatures reviews on sustainable neighborhood, commercial provision, food production and inclusive design were conducted. Furthermore, observations and interviews were conducted to meatball-selling restaurant and food hawker. They were Dewa-ndaru restaurant and the Mr Joko's meatball stall in Siwalankerto. Further, the locational analysis was conducted to determine possible legal but strategic location. Lastly, the participatory design was conducted based on inclusive design principles.

3. Result and Discussions

The analysis of educational facilities and markets showed the potential locations of food-hawker center in Siwalankerto as described below:

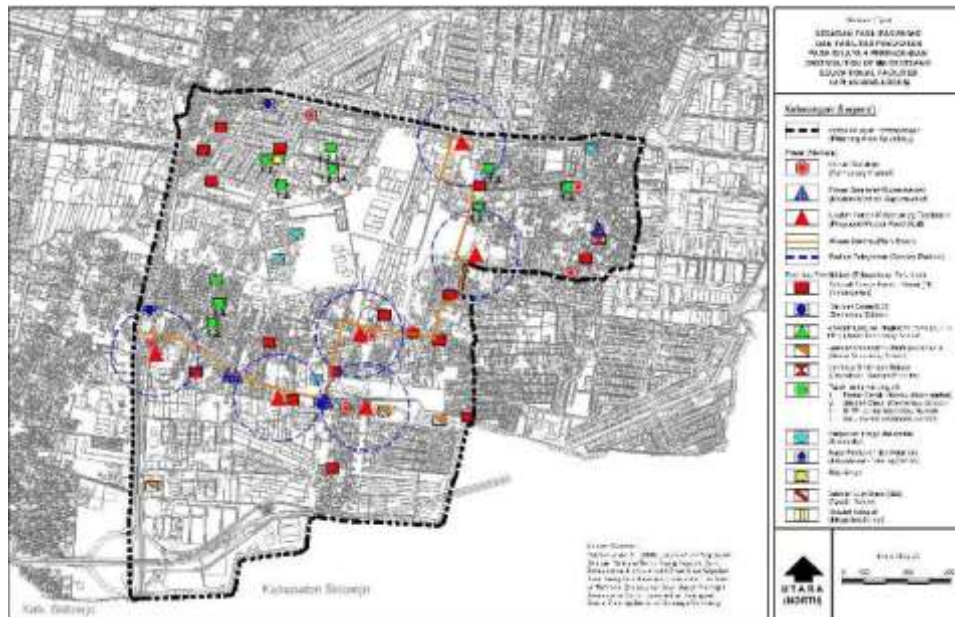


Figure 3 The Analysis of Commercial and Educational Facilities in Siwalankerto in 2008. And seven (7) proposed food kiosks was proposed by Tanuwidjaja et.al. based on the analysis (Source: Poerbantano, 2008, modified by Tanuwidjaja in 2015)^{xiv}.

The seven (7) food kiosk would be proposed for Siwalankerto. The designs would be developed from a typology of food kiosk design. The 3m-by-3m modular of kiosk was selected to achieve affordable and low-cost building structure. The structure of the module was supported by concrete-rigid-frame. Furthermore, the food kiosk was designed considering the person with disability, such as: wheel chair users, crutch users and persons with vision disability. On the other hand, the layout were designed with proper kitchen and accessible toilet design. Explanations of the food kiosk design were in Figure 4 to Figure 7 below.

A ramp with level of 1:12 was provided to facilitate the wheel-chair users accessing the food kiosk. The ramp was also equipped with 100-cm-height-steel-railing. The railing would also assist persons with vision disability to enter the place. On the other hand, crutch users and other walking users were facilitated with stairs (with 30 cm width and 15 cm height). The stairs were widened to cater the crutch users. These provision were to fulfil the first and second principles of inclusive design (the equitable use and flexibility in use).

The guiding path was provided on the main corridor to serve the persons with vision disability. The guiding path yellow colour was selected also to facilitate the low vision persons. This strategy actually fulfilled the perceptible information principle in the inclusive design principles.

The simple and intuitive principle was achieved with simple layout as well as application of guiding path. The 3m-by-3m grid could be multiplied or extended to the back of sites, if empty lands existed. The layout should be kept simple in order to facilitate users' wayfinding also the affordable design. Simplicity also was achieved by brick and con-wood application. The traditional atmosphere was also to be achieved with this prescription.

The accessible toilet (1.5m by 2m size) was also provided to fulfil the equitable use and flexibility in use principles. The toilet was furnished with anti-slip tiles and railings. These features were provided to satisfy the tolerance for error and low physical effort.

The size and space for approach and use principle also was achieved partially by provision of 100 cm space in the dining areas. Meanwhile, some areas might not be approachable by wheelchair users because of limited economical reasoning. This actually showed that accessibility aspect was sometime against the affordability of the design. But still some 40% of the dining areas could be accessed by wheelchair users.

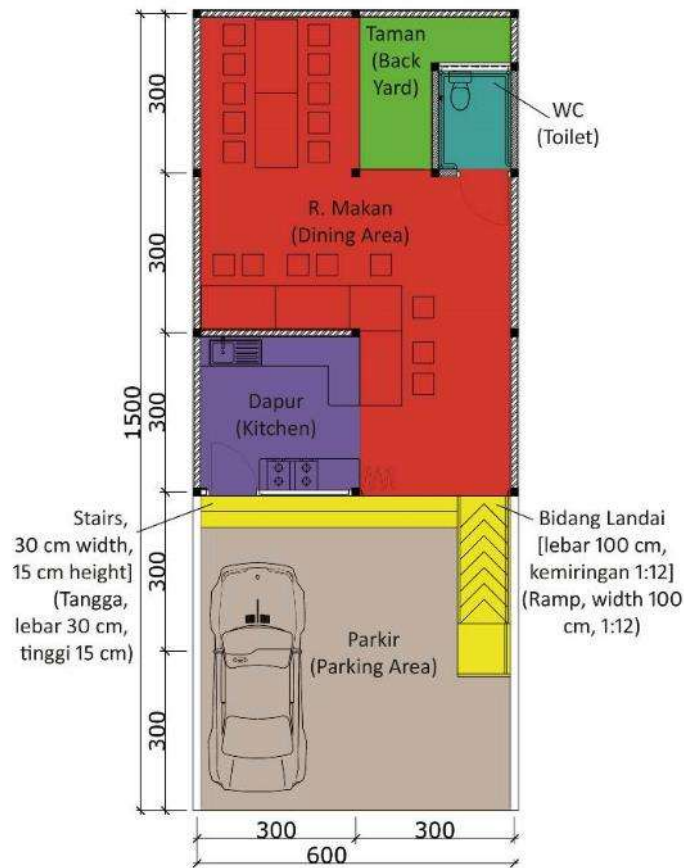


Figure 4 The Food Kiosk Plan (Source: Tanuwidjaja, et.al. in 2015)^{xv}.



Untuk diganti

Figure 5 The The Front Elevation of Food Kiosk (Source: Tanuwidjaja, et.al. in 2015)^{xvi}.



Untuk diganti

Figure 6 The Perspective of Kitchen and Dining Area of Food Kiosk (Source: Tanuwidjaja, et.al. in 2015)^{xvii}.



Figure 7 The Toilet Interior of Food Kiosk (Source: Tanuwidjaja, et.al. in 2015)^{xviii}.

4. Conclusions

The affordable as well as accessible design of food kiosk could still be achieved with sacrificing some area accessibility. Meanwhile, the culture exploration could also enriched the functional design such as the food kiosk. Unfortunately, further research of client perception on the design should be done. This would ensure the sustainability of the food kiosk as well as sustainable food productions – consumptions in developing areas such as Siwalankerto.

Acknowledgements

Acknowledgements are awarded to:

- United Boards
- University Network of Digital (Local) Knowledge in Indonesia
- Rector of Petra, Prof. Ir. Rolly Intan, M.A.Sc., Dr.Eng.
- Vice Rector of Petra for Academic Affairs, Prof. Dr. Ir. Djwantoro Hardjito, M.Eng.
- Head of LPPM UK Petra and Board of Director UNDK in Petra, Mrs. Dr. Juliana Anggono, S.T., M.Sc.
- Dean of the Faculty of Civil Engineering and Planning, Petra Christian University, Mr. Timoticin Kwanda, B.Sc., MRP., Ph.D.
- Head of Architecture Program Study, Petra Christian University, Mrs. Eunike Kristi Julistiono, ST, M.Des.Sc.
- Students of Inclusive Design, Petra Christian University, Architecture Program Study, in 2014-2015.
- Ir. Benny Poerbantanoë, MSP., Lecturer of Petra Christian University and Principal Planner working for the Surabaya Municipality

References

Books:

- Afifah, C.A.N. (2005). Kebiasaan Makan Onggok Singkong sebagai Makanan Pokok (English Translation: The Behavior of Eating Tapioca Stick as the Main Staple)
- Bhatt, V., Ryczynski, W., (2004), How the other half builds, in Watson, D., Plattus, A., Shibley, R., (ed). (2004), Time-Saver Standards for Urban Design, The McGraw-Hill Companies. Downloaded from Digital Engineering Library @ McGraw-Hill (www.digitalengineeringlibrary.com).

Calthorpe, P., (2004), *The Regional City*, in Watson, D., Plattus, A., Shibley, R., (ed). (2004), *Time-Saver Standards for Urban Design*, The McGraw-Hill Companies. Downloaded from Digital Engineering Library @ McGraw-Hill (www.digitalengineeringlibrary.com).

Garvin, A., (2002), *The American City: What Works, What Doesn't*, McGraw-Hill, New York.

Jacobs, J. (1961). *The Death and Life of Great American Cities*. New York: Random House.

Le Corbusier, (1973), *The Athens Charter*, Grossman Publishers, New York.

Poerbantanoë, B., (2008), *Laporan Akhir Penyusunan Evaluasi Rencana Teknik Ruang Kota Unit Distrik Siwalankerto*, diterbitkan oleh Dinas Cipta Karya dan Tata Ruang Kota Surabaya. ((English Translation: Final Report of Technical Evaluation of Detail Master Planning in Siwalankerto District, published by Housing and Spatial Planning Section of Surabaya Municipality)

Susanto, D. & Suparlan, P. (1989). Keanekaragaman Makanan Pokok di Indonesia dan Ketahanan Sosial Budaya, dalam *Jurnal Widyakarya Pangan dan Gizi*. LIPI, Jakarta. (English Translation: The Staples' Diversity in Indonesia and Social-Cultural Susceptive in *Widyakarya Journal*, LIPI, Jakarta).

Website:

<http://www-edc.eng.cam.ac.uk/betterdesign/>

<http://www.universaldesign.ie/exploreampdiscover/the7principles>

http://www.ncsu.edu/ncsu/design/cud/pubs_p/docs/poster.pdf
