



IEEE IEEM2016

2016 IEEE International Conference on
Industrial Engineering and Engineering Management

4-7 December 2016 Bali, Indonesia

www.IEEM.org



IEEE Catalog Number: CFP16IEI-USB
 ISBN: 978-1-5090-3664-6
 Copyright and Reprint Permission: Abstracting is permitted with credit to the source. Libraries are permitted to photocopy beyond the limit of U.S. copyright law for private use of patrons those articles in this volume that carry a code at the bottom of the first page, provided the per-copy fee indicated in the code is paid through Copyright Clearance Center, 222 Rosewood Drive, Danvers, MA 09123. For other copying, reprint or republication permission, write to IEEE Copyrights Manager, IEEE Operations Center, 445 Hoes Lane, Piscataway, NJ 08854. All rights reserved.
 Copyright © 2016 by IEEE

Organized by:
 IEEE TEMS Singapore Chapter
 IEEE TEMS Hong Kong Chapter
 IEEE Indonesia Section

Supported by:
 Institut Teknologi Bandung



Universitas Gadjah Mada



- 🏠 Home
- 📄 Table of Contents
- 📄 Welcome Message
- 👥 Organizers & Committees
- 📄 Keynotes
 - Keynote 1
 - Keynote 2
 - Keynote 3
- 👤 Meet-The-Editors
- 📅 Conference Program
 - 4 Dec 2016
 - 5 Dec 2016
 - 6 Dec 2016
 - 7 Dec 2016
- 👤 Author Index
- 🔧 Technical Support
- 🔍 Article Search

Welcome Message

"Selamat Datang"

We are delighted to extend a warm welcome to you at the 2016 IEEE International Conference on Industrial Engineering and Engineering Management (IEEM2016) to be held from 4th to 7th December 2016 in Bali, Indonesia.

This year, IEEM is jointly organized by IEEE Indonesia Section, IEEE TEMS Singapore Chapter and IEEE TEMS Hong Kong Chapter. The conference is also supported by Institute of Technology Bandung and Gadjah Mada University.

As a high standard conference, IEEM has always brought together the community's most innovative thinkers and dynamic researchers from around the world to share the latest best practices and information in industrial engineering and engineering management. To ensure an exceptional quality of papers, each paper is subjected to rigorous review process.

IEEM2016 received almost 500 submissions and each paper was sent to at least 3 reviewers. The acceptance decisions were then based on at least two consistent recommendations, ensuring the quality and standard of the conference. These papers, organized around 20 topics, will be presented in oral and poster sessions. We are also privileged to have with us three distinguished speakers to deliver the keynote presentations:

Professor James M. Tien, Member of US National Academy of Engineering and Former Dean of the College of Engineering, University of Miami, United States, will present on "The Sputnik of Servgoods: Autonomous Vehicles".

Professor Arnoud De Meyer, President, Singapore Management University, Singapore will discuss on "Manufacturing and Engineering Networks in a Globalised and Data-rich World".

Ibu Marina Kacaribu, Vice President, Enterprise Digital Services, Telkomsel, Indonesia will highlight on "Embracing the Future by Growing the Digital Ecosystem in Indonesia and Deliver Value to Customers".

We would like to thank all authors and participants for their interests, contributions and continued support to IEEM. Lastly, we are also grateful to the technical program committee members and reviewers for their help in the review process.

We hope you have a fruitful conference and a culturally engaging experience in Bali!

Kadarsah SURYADI, General Chair
Institute of Technology Bandung, Indonesia

T.M.A. ARI SAMADHI, Organizing Chair
Institute of Technology Bandung, Indonesia

Budi HARTONO, Organizing Chair
Gadjah Mada University, Indonesia

Nan CHEN, Program Chair
National University of Singapore, Singapore

Min XIE, Program Chair

Organizers and Committees

General Chair

Kadarsah SURYADI

Institute of Technology Bandung, Indonesia

Organizing Chairs

Budi HARTONO

Gadjah Mada University, Indonesia

T.M.A. ARI SAMADHI

Institute of Technology Bandung, Indonesia

Program Chairs

Nan CHEN

National University of Singapore, Singapore

Min XIE

City University of Hong Kong, Hong Kong SAR

Financial Chair

Kah Hin CHAI

National University of Singapore, Singapore

Publication Chair

Carmen Ka Man LEE

Hong Kong Polytechnic University, Hong Kong SAR

International Liaison Chair

Roger JIAO

Georgia Institute of Technology, USA

Members

Markus HARTONO

University of Surabaya, Indonesia

Nurul INDARTI

Gadjah Mada University, Indonesia

Songlin CHEN

Nanyang Technological University, Singapore

Seung Ki MOON

Nanyang Technological University, Singapore

Zhisheng YE

National University of Singapore, Singapore

Walter FUNG

City University of Hong Kong, Hong Kong SAR

Hongyi SUN

City University of Hong Kong, Hong Kong SAR

Aldy GUNAWAN

Singapore Management University, Singapore

Indra GUNAWAN

Federation University Australia, Australia

Guillermo GUTIERREZ

Instituto Tecnológico de Morelia, Mexico

Mamun HABIB

BRAC University, Bangladesh

Rika Ampuh HADIGUNA

Andalas University, Indonesia

Siana HALIM

Petra Christian University, Indonesia

Markus HARTONO

University of Surabaya, Indonesia

Takashi HASUIKE

Waseda University, Japan

Jishnu HAZRA

Indian Institute of Management, India

Yu-Hsiang HSIAO

National Taipei University, Taiwan

Qingpei HU

Chinese Academy of Sciences, China

Chi-Cheng HUANG

Aletheia University, Taiwan

Chin-Yu HUANG

National Tsing Hua University, Taiwan

Supachart IAMRATANAKUL

Kasetsart University, Thailand

Shinji INOUE

Tottori University, Japan

Bermawi ISKANDAR

Bandung Institute of Technology, Indonesia

Ville ISOHERRANEN

University of Oulu, Finland

Shino IWAMI

Eotvos Lorand University, Hungary

Raja JAYARAMAN

Khalifa University, United Arab Emirates

Chibli JOUMAA

American University of the MiddleEast, Kuwait

Yuya KAJIKAWA

Tokyo Institute of Technology, Japan

Parminder Singh KANG

De Montfort University, United Kingdom

Konstantinos KIRYTOPOULOS

National Technical University of Athens, Greece

Harekrishna MISRA

Institute of Rural Management Anand, India

Lars MOENCH

University of Hagen, Germany

Wasawat NAKKIEW

Chiang Mai University, Thailand

Dinh Son NGUYEN

University of Science and Technology, The University of Danang, Viet Nam

Sanjay Kumar PALEI

Indian Institute of Technology(BHU), Varanasi, India

Naraphorn PAOPRASERT

Kasetsart University, Thailand

Jennifer PERCIVAL

University of Ontario Institute of Technology, Canada

Alan PILKINGTON

University of Westminster, United Kingdom

Gyan PRAKASH

Indian Institute of Information Technology and Management, India

Kit Fai PUN

University of the West Indies, Trinidad and Tobago

R.M. Chandima RATNAYAKE

University of Stavanger, Norway

Ralph RIEDEL

Chemnitz University of Technology, Germany

Fernando ROMERO

University of Minho, Portugal

Mojahid Saeed OSMAN

American University of Sharjah, United Arab Emirates

Tomoko SAIKI

Tokyo Institute of Technology, Japan

Kin Meng SAM

University of Macau, China

Jorge SANTOS

Universidade Federal do Rio de Janeiro, Brazil

Kiyoshi SAWADA

University of Marketing and Distribution Sciences, Japan

Mahmood SHAFIEE

School of Applied Sciences, Cranfield University, United Kingdom

Technical Program Committee**Dotun ADEBANJO**

University of Greenwich, United Kingdom

Michel ALDANONDO

The University of Toulouse Mines Albi, France

Luciana ALENCAR

Federal University of Pernambuco, Brazil

Hisham ALIDRISI

King Abdulaziz University, Saudi Arabia

Imad ALSYOUF

University of Sharjah, United Arab Emirates

Teresa ALVAREZ

University of Valladolid, Spain

Elita AMRINA

Andalas University, Indonesia

Ana Paula BARROSO

UNIDEMI, Faculty of Science and Technology, New University of Lisbon, Portugal

Mahdi BASHIRI

Shahed University, Iran

Philipp BAUMANN

University of Bern, Switzerland

Zhiqiang CAI

Northwestern Polytechnical University, China

Ayon CHAKRABORTY

Indian Institute of Management Tiruchirapalli, India

Paul CHANG

National Changhua University of Education, Taiwan

Bing CHEN

Northwestern Polytechnical University, China

Mu-Chen CHEN

National Chiao Tung University, Taiwan

Shin-Guang CHEN

Tungnan University, Taiwan

Chuang-Chun CHIOU

Dayeh University, Taiwan

Stefan CREEMERS

IESEG School of Management, France

Rob DEKKERS

University of Glasgow, United Kingdom

Martin DROZDA

Slovak University of Technology, Slovakia (Slovak Republic)

Chien-Liang KUO

Chinese Culture University, Taiwan

Chien-Sing LEE

Sunway University, Malaysia

Jinho LEE

Korea Naval Academy, South Korea

Ming Ha LEE

Swinburne University of Technology Sarawak Campus, Malaysia

Yanfu LI

CentraleSupélec, France

Wenzhu LIAO

Chongqing University, China

SC Johnson LIM

Universiti Tun Hussein Onn Malaysia, Malaysia

Chen-ju LIN

Yuan Ze University, Taiwan

Chu-Ti LIN

National Chiayi University, Taiwan

Danping LIN

Shanghai Maritime University, China

Tyrone T. LIN

National Dong Hwa University, Taiwan

Weidong LIN

Singapore Temasek Polytechnic, Singapore

Bor-Shong LIU

St. John's University, Taiwan

Yiliu LIU

Norwegian University of Science and Technology, Norway

Mei-Chen LO

National United University, Taiwan

Huitian LU

South Dakota State University, United States

Jose MACHADO

University of Minho, Portugal

Virginia MACHADO

UNIDEMI, FCT-UNL, Portugal

Romeo MANALO

Manila Electric Company, Philippines

Mohammad SHAMSUZZAMAN

University of Sharjah, United Arab Emirates

Ali SIADAT

Arts et Metiers ParisTech, France

Ronnachai SIROVETNUKUL

Mahidol University, Thailand

Wichitsawat SUKSAWAT NA**AYUDHYA**

King Mongkut's Institute of Technology, Ladkrabang, Bangkok, Thailand

Syafiie SYAFIIE

University Putra Malaysia, Malaysia

Fumiko TAKEDA

University of Tokyo, Japan

Yoshinobu TAMURA

Yamaguchi University, Japan

Shunji TANAKA

Kyoto University, Japan

Arnesh TELUKDARIE

University of Johannesburg, South Africa

Purit THANAKIJKASEM

King Mongkut's University of Technology Thonburi, Thailand

Norbert TRAUTMANN

University of Bern, Switzerland

Wen-Hsien TSAI

National Central University, Taiwan

Yuan-Jye TSENG

Yuan Ze University, Taiwan

David VALIS

University of Defence, Czech Republic

Chun WANG

Concordia University, Canada

Seng Fat WONG

University of Macau, Macau

ZhengGuo XU

Zhejiang University, China

Bingwen YAN

Cape Peninsula University of Technology, South Africa

QZ YANG

Circular Economy Research Centre, China

Xue-Ming YUAN

Singapore Institute of Manufacturing Technology, Singapore

Linda ZHANG

IESEG School of Management, France

Ilaria GIANNOCCARO
Politecnico di Bari, Italy

Fabio GONTIJO
UNIPAM, Brazil

Conference Program

*Subject to change without notice

Sunday, 04 December 2016 Bali Nusa Dua Convention Center, Ground Floor										
Venue	Pecatu Lobby									
09:30 - 14:30	Optional AM Tour "Nature Program" (Ticketed Event - Requires Advance Booking) Collect Tickets between 08:30 - 09:15 from Office 2 (Secretariat Office)									
14:30 - 16:00	Welcome Reception									
14:30 - 17:00	Registration									
16:00 - 21:30	Optional Eve Tour "Culture Program" (Ticketed Event - Requires Advance Booking)									
Monday - 05 December 2016 Bali Nusa Dua Convention Center, Ground Floor										
Venue	Pecatu 1, 2									
08:30 - 17:00	Registration									
09:30 - 09:45	Welcome & Opening									
09:45 - 10:30	Keynote 1 "The Sputnik of Servgoods: Autonomous Vehicles" James M. TIEN - Member, US National Academy of Engineering & <i>Former Dean of the College of Engineering, University of Miami, United States</i>									
10:30 - 11:00	AM Coffee/Tea									
11:00 - 11:45	Keynote 2 "Manufacturing and Engineering Networks in a Globalised and Data-rich World" Arnoud DE MEYER - President, Singapore Management University, Singapore									
11:45 - 12:30	Keynote 3 "Embracing the Future by Growing the Digital Ecosystem in Indonesia and Deliver Value to Customers" Marina KACARIBU - Vice President, Enterprise Digital Services, Telkomsel, Indonesia									
Venue	Pecatu 3, 5									
12:30 - 13:30	Lunch Buffet									
Venue	Mengwi 1	Mengwi 2	Mengwi 3	Mengwi 5	Mengwi 6	Mengwi 7	Mengwi 8	VIP Room	Pecatu 1	Pecatu 2
13:30 - 15:00	"Meet-the-Editors" Panel Session	Operations Research 1	Supply Chain Management 1	Engineering Education and Training	Human Factors 1	Healthcare Systems and Management	Systems Modeling and Simulation 1	Intelligent Systems	Reliability and Maintenance Engineering 1	Service Innovation and Management
Venue	Pecatu Lobby									
15:00 - 15:30	PM Coffee/Tea									
Venue	Mengwi 1	Mengwi 2	Mengwi 3	Mengwi 5	Mengwi 6	Mengwi 7	Mengwi 8	VIP Room	Pecatu 1	Pecatu 2
15:30 - 17:00	Technology and Knowledge Management 1	Operations Research 2	Supply Chain Management 2	Quality Control and Management 1	Human Factors 2	Decision Analysis and Methods 1	Systems Modeling and Simulation 2	Safety, Security and Risk Management	Reliability and Maintenance Engineering 2	E-Business and E-Commerce
Venue	Grand Hyatt Hotel - Add: Kawasan Wisata Nusa Dua BTDC									
18:30 - 22:00	Conference Dinner at Pasar Senggol									
Tuesday - 6 December 2016 Bali Nusa Dua Convention Center, Ground Floor										
Venue	Pecatu Lobby									
08:30 - 17:00	Registration									
Venue	Mengwi 1	Mengwi 2	Mengwi 3	Mengwi 5	Mengwi 6	Mengwi 7	Mengwi 8	VIP Room	Pecatu 1	Pecatu 2
09:00	Technology	Operations	Supply	Quality	Manufacturing	Decision	Project	Facilities	Reliability	Information

10:30 -	and Knowledge Management 2	Research 3	Chain Management 3	Control and Management 2	Systems 1	Analysis and Methods 2	Management 1	Planning and Management	and Maintenance Engineering 3	Processing and Engineering
Venue	Pecatu Lobby									
10:30 -	AM Break									
11:00 -	Mengwi 1	Mengwi 2	Mengwi 3	Mengwi 5	Mengwi 6	Mengwi 7	Mengwi 8	VIP Room	Pecatu 1	Pecatu 2
11:00 -	Technology and Knowledge Management 3	Operations Research 4	Supply Chain Management 4	Production Planning and Control 1	Manufacturing Systems 2	Decision Analysis and Methods 3	Project Management 2	Big Data and Analytics	Reliability and Maintenance Engineering 4	Poster Build Up
12:30 -	Venue Pecatu 3, 5									
12:30 -	Lunch Buffet									
13:30 -	Venue Pecatu 2									
13:30 -	Authors/Presenters Poster Set-up									
15:00 -	Mengwi 1	Mengwi 2	Mengwi 3	Mengwi 5	Mengwi 6	Mengwi 7	Mengwi 8	VIP Room	Pecatu 1	Pecatu 2
13:30 -	Technology and Knowledge Management 4	Operations Research 5	Supply Chain Management 5	Production Planning and Control 2	Manufacturing Systems 3	Decision Analysis and Methods 4	Project Management 3	Engineering Economy and Cost Analysis	Reliability and Maintenance Engineering 5	Poster Display
15:00 -	Venue Pecatu 1									
15:00 -	Best Paper Awards Presentation									
15:30 -	Venue Pecatu 2									
15:30 -	Poster Session & Coffee/Tea Reception									
17:00 -	Authors/Presenters Poster Tear-down									
17:30 -										
Wednesday - 07 December 2016 Bali Nusa Dua Convention Center, Ground Floor										
08:00 -	Optional Day Tour "Subak" (Ticketed Event - Requires Advance Booking)									
15:00										

Group Decision Using Analytical Hierarchical Process: Surabaya's Universities Library in Digital Natives Perspective

S. Halim¹, Felecia¹, D. Wulandari², F.L. Susanti¹

¹Department of Industrial Engineering, Petra Christian University, Surabaya, Indonesia

²Library Petra Christian University, Surabaya, Indonesia

(halim@petra.ac.id, felecia@petra.ac.id, dian@petra.ac.id, fransiscalucy.susanti@gmail.com)

Abstract – In recent years the numbers of out of shelves books in the Surabaya's universities library is decreasing. This is not a surprising phenomenon. The digital natives, as the primary customers of the library, are generation which always connect to the world through their gadgets. Library which in the past was the solely place for searching the information is no longer the source of finding the information. Using analytical hierarchy process for groups, we investigated the representative library of the digital natives, particularly in six universities in Surabaya. Additionally, we also proposed a correction to the geometric mean which usually used to represents the scale for the group.

Keywords – Analytical hierarchy process, group decision, digital natives, library.

I. INTRODUCTION

Library which in the past was the place for searching information, now is no longer as the only place for finding the information. Internet has taken the primary library role as the source for finding the information. Therefore, no surprisingly that the numbers of out of shelves books, particularly in Surabaya universities library is decreasing [1]. The digital natives, which are the main customers of the library needs library not only as a place for borrowing books. They needs library which represented the characteristic of the digital natives [2, 3].

Digital native is the generation which is born after 1994 [4] and "native" in the language of computers, social media and other sites on the internet [5]. They gather information through their gadget which they can connected to the internet easily. They are nontraditional learners [6]. Their literacy to the digital world are very high. Oblinger and Oblinger [6] stated the characteristics of this generation, not only digital literate, they are also connected, immediate, experiential, prolific communicators (social), work in a team, their preference is for structure rather than ambiguity, oriented toward making observations, visual and kinesthetic, take part in the community activities.

We have surveyed 460 students in six biggest universities in Surabaya about their needs of library and what kind of library' features that represent digital natives' characteristic. The finding of the previous studies: the library is still needed, but the functions are not solely for borrowing books. Library should also be a place for leisure and discussion [2, 3]. Continuing, the finding in the previous studies, in this research we examine their preferences in detail. We surveyed 317 students in the same universities as be studied before. In this survey, we asked them to do pairwise comparisons for each library features

so that we can know the ranking of their needs. Additionally, we used the Analytical Hierarchical Process [7] for group decision makers.

II. METHODOLOGY

The Analytic Hierarchy Process (AHP) is a theory of relative measurement with absolute scale of both tangible and intangible criteria based on the judgment of knowledgeable and expert people [7]. In the AHP the judgments are made by comparing many criteria in reciprocal pairwise. The fundamental scale that use in AHP can be seen in Table 1.

TABLE I
FUNDAMENTAL SCALE

1	equal importance
3	moderate importance of one over another
5	strong or essential importance
7	very strong or demonstrated importance
9	extreme importance
2,4,6,8	Intermediate values
Use reciprocals for inverse comparisons	

In our case we only used 3, 5, 7 and 9 scaling with their respective reciprocals for the inverse comparisons. We remove the number 1 in the fundamental scaling, so that there will be no equal importance in comparing all criteria.

In a single decision maker, we let $X = (x_1, x_2, \dots, x_n)$ is a finite set of n alternative. A decision maker compares each alternative pair wisely, e.g. x_1 to x_2 and gives a certain scaling number for example a_{12} as his or her decision. The pairwise comparisons are collected into a pairwise comparison matrix. In this matrix the lower triangular of the matrix is reciprocal to the upper triangular and the diagonal matrix equal to one. Let a_{kl} is the element of matrix A

$$A = \begin{pmatrix} 1 & a_{12} & \dots & a_{1n} \\ 1/a_{12} & 1 & \dots & a_{2n} \\ \vdots & \vdots & \ddots & \vdots \\ 1/a_{1n} & 1/a_{2n} & \dots & 1 \end{pmatrix}$$

Once a pairwise comparison matrix is completed, we can derive the priority vector $w = (w_1, w_2, \dots, w_n)$ using for example normalized principal eigen vector of matrix A [8].

In a group decision makers, the scale for each criteria from

all members in a group is represented by the geometric mean of the individual scales.

Let $X_j = (x_{1j}, x_{2j}, \dots, x_{nj})$, $j = 1, \dots, m$ is a finite set of n alternative which is given to decision maker j . Let m is the number of decision makers in a group.

a_{kl}^j is a scale given by decision maker j on when he or she compares alternative x_k to x_l . The scale's geometric mean which represent the group of decision makers can be written as

$$\tilde{a}_{kl} = \sqrt[m]{\prod_{j=1}^m a_{kl}^j}; \quad (1)$$

Since the individual scale which is given by for example two decision makers can be reciprocal to each other, for example $a_{12}^1 = 9$, $a_{21}^1 = 1/9$ then multiplying those two scales will give 1 as a result. If many scaling are reciprocal to each other then (1) can be written as

$$\tilde{a}_{kl} = \sqrt[m]{\prod_{j=1}^{m_1} a_{kl}^j \prod_1^{m_2} 1} \quad (2)$$

where $m_1 < m$; m_2 is the number of pairs which are reciprocal to each other and a_{kl}^j are not reciprocal to each other. We then can write (2) as

$$\tilde{a}_{kl} = \sqrt[m]{\prod_{j=1}^{m_1} a_{kl}^j} \text{ as } m \rightarrow \infty \text{ then } \tilde{a}_{kl} \rightarrow 0 \quad (3)$$

To avoid (3), we then preprocessed the individual scale and removed the scales that reciprocal to each other. The preprocessing step can be done by constructing frequency table of each answer for each criteria.

TABLE II
SCALING FREQUENCY TABLE

Scale	Frequency
1/9	$f_{1/9}$
1/7	$f_{1/7}$
1/5	$f_{1/5}$
1/3	$f_{1/3}$
3	f_3
5	f_5
7	f_7
9	f_9

f_s is the frequency at scaling number s

Supposing $f_9 > f_{1/9}$ then $f_9 - f_{1/9} = f_9^*$ is the new frequency of the scale 9, and the $f_{1/9} = 0$. Since the scale 9 and 1/9 is reciprocal to each other the product of $f_{1/9}$ pairs of these two scales will equal to one. Doing this step to the other reciprocal pairs then we will have the new frequency table. Calculate the new geometric mean using this table.

Suppose $f_9 > f_{1/9}$; $f_7 < f_{1/7}$; $f_5 > f_{1/5}$; $f_3 = f_{1/3}$ we then have f_9^* ; $f_{1/7}^*$; f_5^* and $m_1 = f_9^* + f_{1/7}^* + f_5^*$

The new geometric mean will be:

$$\tilde{a}_{kl} = \sqrt[m_1]{\prod_1^{f_9^*} 9 \prod_1^{f_{1/7}^*} 1/7 \prod_1^{f_5^*} 5} \text{ or}$$

$$\tilde{a}_{kl} = \sqrt[m_1]{(9)^{f_9^*} (1/7)^{f_{1/7}^*} (5)^{f_5^*}}$$

For now on, in this paper we use

$$\tilde{a}_{kl} = \sqrt[m_1]{\prod_{j=1}^{m_1} a_{kl}^j} \quad (4)$$

as the geometric mean to represent the group decision.

The geometric consistency index [9] for the j -th decision maker is formulated as:

$$GCI^j = \frac{1}{(n-1)(n-1)} \sum_{k < l} (\log e_{kl}^j)^2 \quad (5)$$

where

$$e_{kl}^j = a_{kl}^j \frac{w_k^j}{w_l^j} \text{ for } 1 \leq k, l \leq n;$$

a_{kl}^j is the element of the comparison matrix A_j and w_k^j is the priority weight of criteria k from decision makers j . Note instead of m decision makers, we only use instead of m_1 . Aguaron and Jimenes [10] suggested that for comparison matrices with size $m = 3$, the threshold is 0.31, for $m = 4$, the threshold is 0.35; and when $m > 4$, the threshold is 0.37. If the GCI^j is less than the corresponding threshold, then the comparison matrix of the j -th decision maker will pass the consistency test.

The consistency index of pair wise comparison matrix is given by $C.I = (\lambda_{max} - n)/(n - 1)$, λ_{max} is the max eigen value of the respective matrix (for the detail see [11]).

III. RESULTS

A. Data

This research was conducted in six universities in Surabaya. The three of those universities are state universities, i.e., Institute Technology of Sepuluh Nopember (ITS) 50 respondents, Airlangga University (Unair) 56 respondents, Universitas Pembangunan Nasional (UPN) 27 respondents, and three of them are private university: Petra Christian University (PCU) 114 respondents, University of Surabaya (Ubaya) 50 respondents and Widya Mandala Catholic University (UWM) 20 respondents. They are active students and most of them are class 2015 (32%), class 2014 (24%), 23% class of 2013, and the rest are from class 2010-2012. Most of the respondents are female (62%) and male (38%) see Fig. 1.

B. The Model

The model was constructed via focus group discussion (FGD) between the heads of the libraries from ITS, Ubaya, UKP and Surabaya city-library [2]. Besides the FGD, we also did open-survey to 100 students from those six

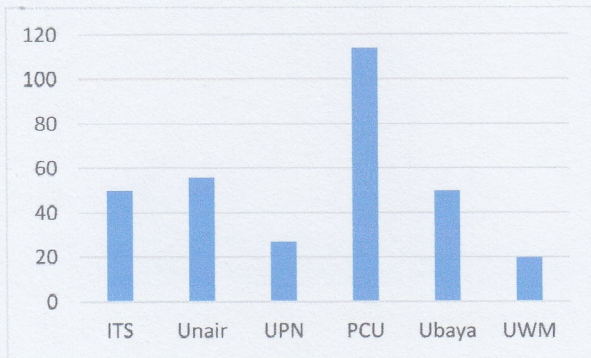


Fig.1 The distribution of the university respondents in this study.

universities, questioning what kind of facilities that they hope are provided by the library. The summary of the FGD and the open survey is depicted in the AHP model (Fig. 2)

C. Priorities

The students as the decision makers in this research, particularly study in state universities (ITS, Unair, UPN) and private universities (PCU, Ubaya and UWM). Regardless of the status of the university, the Top priority on each criteria for them are the books are up to date, fast wi-fi access, the library is comfortable (i.e. clean and air conditioning) and the staffs are helpful. The complete list of the ideal library according to them is summarized in Table III.

TABLE III
LIBRARY BASED ON STUDENT'S PRIORITY

Criteria	Priority
Book Collection	1. The books are up to date
	2. Provide reference text-books
	3. Online collections
Technology	1. Fast Wi-fi access
	2. Easiness to access the digital collections / journal
	3. Catalog online and library website
Facilities	1. Comfortable
	2. Leisure place/carpeted rooms.
	3. Has discussion rooms.
	4. Has many electric plugs
	5. Library café
	6. Private reading rooms
	7. Sofa
	8. Interesting interior design
	9. Mini theater
Services	1. The staffs are helpful
	2. Operational hours
	3. The staffs are informative.

The student's priorities in these criteria: Book collection, Technology and Services are the same either

they are from state or private universities. But those priorities are different, when those two groups of students decided the ideal facilities for the library. For state universities the top three facilities that they need for the library are comfortable, has a leisure place with carpeted room so that they can study and have discussion on the floor, and the library has rooms for serious discussion. However, for the private universities students, the top three priorities for them are the library should have rooms for serious discussion, it should be comfortable (clean and air conditioning) and have leisure room. The complete list of ideal library facilities according to the state and private universities is given in Table IV.

TABLE IV
LIBRARY FACILITIES ON THE STATE UNIVERSITIES AND PRIVATE UNIVERSITIES PERSPECTIVE

State Universities	Private Universities
1. Comfortable	1. Has discussion rooms
2. Leisure room/carpeted rooms	2. Comfortable
3. Has discussion rooms.	3. Leisure room/carpeted rooms
4. Has many electricity plugs	4. Has many electricity plugs
5. Library café	5. Library café
6. Private reading rooms	6. Private reading rooms
7. Sofa	7. Sofa
8. Interesting interior design	8. Interesting interior design
9. Mini theater	9. Mini theater

IV. DISCUSSION

This study was conducted using AHP for group decision makers. We calculated the weighted priorities vectors using super-decision software [12]. Additionally to the geometric-mean that usually used as the representative scaling for a group decision makers, we proposed a preprocessing step before directly apply the geometric mean. The proposed preprocessing will avoid us to get a geometric means that close to 0.

There are many ways to represent the scaling and the consistency index for groups of decision makers. We will explore those methods and find new proposed methods in our future research.

V. CONCLUSION

In the previous study we found that library is still needed by the digital natives, but now the function is not solely as a place for borrowing books. In this research, we questioning them what kind of facilities in the library that they really want to be there. Using AHP, we found those priorities.

For the next research, we are going to use the finding of this research for designing a library for the digital native, particularly for the digital natives in Surabaya.

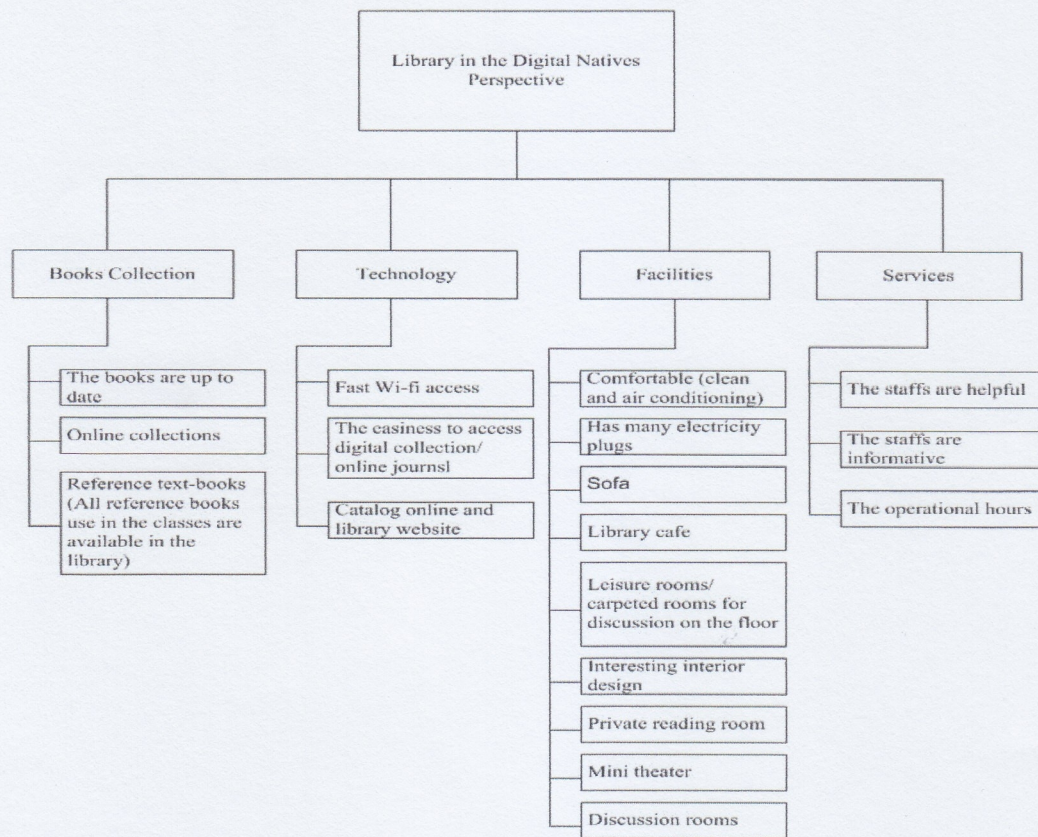


Fig. 2 The AHP model for the library

ACKNOWLEDGMENT

This research was financially supported by the Indonesian Ministry of Research and Technology-Directorate of High Education (Kemenristek-DIKTI):

REFERENCES

- [1] D. Wulandari, S. Halim, and A. Nugraha, *Analisa Faktor-faktor yang mempengaruhi minat berkunjung mahasiswa ke perpustakaan UK. Petra Surabaya*, Research Report, LPPM-UK. Petra, 2012
- [2] S. Halim, D. Wulandari, D., D.K.F., Sopacua, , Felecia and Ingrid, "Library for the digital natives: What to do", *Proceeding of International Conference on Record and Library*, Universitas Airlangga, Surabaya 10-11 Oct 2015.
- [3] S. Halim, Felecia, Inggid, D. Wulandari, and D.K.F. Sopacua, "Digital natives: Its characteristics and challenge to the library service quality", *Proceedings of Second International Conference on Electrical Systems, Technology and Information (ICESTI 2015)*, Springer, *Lecture Notes in Electrical Engineering*, January 2016, Volume 365, pp. 487-494.
- [4] M. Prensky, "Digital natives, digital immigrants", *On the Horizon*, vol 9, no. 5, pp. 1-6, October 2001.
- [5] J.K. Lippincot, "Net generation and libraries, in educating the net generation. [Online]. Available: <http://www.educause.edu/educatingthenetgen/>
- [6] D.G. Oblinger and J.L Oblinger, "Is it age or IT: First steps toward understanding the net generation in educating the Net Generation. [Online]. Available: <http://www.educause.edu/educatingthenetgen>
- [7] T.L. Saaty, "Decision making with the analytical hierarchy process", *International Journal of Service Science*, vol.1, no.1, pp. 83-98,2008.
- [8] M. Brunelli, "Introduction to the Analytic Hierarchy Process", *SpringerBriefs in Operations Research*, P.83.978-3-319=12502-2, 2015
- [9] G. Crawford and C. William, "A Note on the analysis of subjective judgment matrices", *Journal of Mathematical and Psychology*, 29, pp. 387-405, 1985.
- [10] M. J. Jimenez, J. A., Joven, A. R., Pirla, A.T. Lanuza, "A spreadsheet module for consistent consensus building in AHP-group decision making", *Group Decision Negotiation*, 14,pp 89-108, 2005.
- [11]T.L. Saaty, "The Analytic Hierarchy Process", Mac. GrawHill New York, 1980.
- [12]ANP team, "Superdecision-Software", [online] available: <http://www.superdecisions.com/>