

Paper 1

by Yulia Yulia

Submission date: 15-Aug-2019 05:59PM (UTC+0700)

Submission ID: 1160310349

File name: Odoo_Data_Mining_Module_Using_Market_Basket_Analysis.pdf (1.64M)

Word count: 3927

Character count: 20240



Odoo Data Mining Module Using Market Basket Analysis

Yulia*, Gregorius Satia Budhi, and Stefani Natalia Hendratha, *Member, KIICE*

Department of Informatics, Petra Christian University, Surabaya 60236, Indonesia

Abstract

Odoo is an enterprise resource planning information system providing modules to support the basic business function in companies. This research will look into the development of an additional module at Odoo. This module is a data mining module using Market Basket Analysis (MBA) using FP-Growth algorithm in managing OLTP of sales transaction to be useful information for users to improve the analysis of company business strategy. The FP-Growth algorithm used in the application was able to produce multidimensional association rules. The company will know more about their sales and customers' buying habits. Performing trend analysis will give a valuable insight into the inner-workings of the business. The testing of the module is using the data from X Supermarket. The final result of this module is generated from a data mining process in the form of association rule. The rule is presented in narrative and graphical form to be understood easier.

Index Terms: Data mining, FP-Growth, Market Basket Analysis, Odoo

I. INTRODUCTION

Information System plays an important role in improving business competitiveness in all aspects. An enterprise resource planning (ERP) provides an ideal platform to answer those needs, though demanding high risks and costs to implement [1]. Those risks and cost can be minimized using Odoo.

Odoo is an ERP system developed as an open source application. Therefore, Odoo supports the reuse of the library built previously. The quality of Odoo is also good as there are many people involved in its development. More than 1,500 developers have been involved in the Odoo community. It also has developed more than 4,500 modules to meet the business needs.

Out of those modules owned by Odoo, none of them can meet the needs of Business Intelligence using data mining methodology. Therefore, an additional feature of business intelligence using data mining is needed to equip the capability

of Odoo in increasing the competitiveness of companies.

One of the functions of the data mining used in analyzing sales is the association function which is often called Market Basket Analysis (MBA). MBA uses an algorithm to search for products bought at the same time. FP-Growth algorithm was used for this research. The choice was based on the stability and speed owned by this algorithm. The above mentioned stability means that the algorithm will always have a good performance when tested at low and high minimum support. The sales data of a supermarket was used to test the module.

II. LITERATURE REVIEW

A. Odoo System

Odoo is a compilation of open source business applications. Odoo was developed as an open source application.

Received 15 March 2018, Revised 22 March 2018, Accepted 23 March 2018

*Corresponding Author (E-mail: yulia@petra.ac.id, Tel: +62-8973127237)

Department of Informatics, Petra Christian University, Siwalankerto, Surabaya 60236, Indonesia.

Open Access <https://doi.org/10.6109/jicce.2018.16.1.52>

print ISSN: 2234-8255 online ISSN: 2234-8883

This is an Open Access article distributed under the terms of the Creative Commons Attribution Non-Commercial License (<http://creativecommons.org/licenses/by-nc/3.0/>) which permits unrestricted non-commercial use, distribution, and reproduction in any medium, provided the original work is properly cited.

Copyright © The Korea Institute of Information and Communication Engineering

Therefore, Odoo supports the reuse of the library developed previously. The great number of people involved in its development guarantees the good quality of this application. More than 1,500 developers are involved in the Odoo community and have been developing 4,500 modules to meet the business needs of the users. The users of Odoo has been reaching up than 2,000,000 spread all over the world [2].

The Odoo system consists of three main components: PostgreSQL, Odoo server application, and web server [3]. The open source PostgreSQL database [4] accommodates all Odoo data and configuration. Web server is a separate application making it possible for users to get access directly to the Odoo server application.

B. Data Mining

Data mining is used to deal with very large amount of data which are stored in the data warehouses and databases, to discovering interesting knowledge and information [5]. For the purpose of discovering, digging or mining the knowledge, data mining has several functions. Six functions in data mining are description function, estimation function, and prediction function, classification function, grouping function and association function [6].

The data at operational database comes from many sources. Therefore, it is susceptible towards inconsistent data such as empty fields and invalid data. The low quality of data will result in low quality of mining results as well. Thus, the data has to be prepared through the preprocessing stage before entering mining stage [7].

There are several preprocessing techniques such as data cleaning and data reduction. Data cleaning is used to erase noise and correct the inconsistent data. Data reduction is a process in reducing the data volume representation but not reducing the quality of the analysis result. One part of the data reduction is data discretization focusing at data numeric [7].

C. Market Basket Analysis

MBA is one of the methods in data mining focusing at the identification of products bought together at one transaction. There are some metrics such as support and confidence at MBA algorithm. Support is the percentage of all transactions containing the chosen item set. Confidence is the percentage of all transactions containing leading item and depending item. Leading item is a reference product.

The output from MBA is a series of rules identifying the products bought at the same time. This algorithm belongs to *The Top Ten Algorithms in Data Mining* [8]. MBA has several algorithms in producing association rules, such as Apriori and Find Pattern Growth (FP-Growth).

D. Find Pattern Tree

Find Pattern Tree (FP-Tree) is a compressed representation from input data. Each transaction data is read, mapped into a path at FP-Tree. Transactions having the same items will create overlapping paths. The more overlapping paths created, the more compressed an FP-Tree structure is formed [9, 10].

Every node at a tree shows an item name, support counter indicating the amount of transaction path crossing over that node, and a linking pointer linking nodes with the same item between paths.

The algorithm in building FP-Tree is as follows [11]:

Algorithm 1. The building of FP-Tree

Input: a DB transaction database and the desired minimum support

Output: FP-Tree, frequent-pattern tree from DB

Method: FP-Tree is built in the way as follows:

1. Scan the DB transaction database once. Get F, frequent items sets, and support from each frequent item. Sort descendingly the support from F. Put the order list from frequent items in the Flist.
2. Make root from FP-Tree and label it as "null". Each Trans transaction at DB, is treated as follows:
 - Each frequent item in Trans is sorted based on the order list at Flist. The list the frequent item in the sorted Trans, is defined as [p]P, where p is the first element and P is the remaining list. Call the insert tree ([p]P, T) function.
 - The insert_tree ([p]P, T) function runs as follows. If T has an N child where N.item-name = p.item-name, then add count from N once; else make a new node N with count once, then link parent link from N to T, then link node-link N to other nodes having the same item-name via node-link structure. If P is still not empty, call insert_tree ([p]P, T) recursively.

E. Find Pattern Growth

FP-Growth algorithm is an alternative algorithm using a radical different approach to find frequent itemsets [9]. This algorithm does not use generate-and-test paradigm which is used at Apriori. Instead, FP-Growth is using a special data structure called FP-Tree. Frequent itemsets is extracted directly from FP-Tree. Therefore, the FP-Growth algorithm is faster than the Apriori algorithm.

Zheng et al. [12] were doing a comparison towards the performance of four MBA algorithms: Apriori, FP_Growth, Charm and Closet. The performance was measured from how fast algorithm produced frequent itemsets from four datasets. Table 1 shows the result of the test conducted with high minimum supports and low minimum supports. From each test, the FP-Growth algorithm never had the lowest per-

Table 1. The capability ranking algorithm

	High min support	Low min support
IBM-Artificial	Ap > FP > Ch > Cl	FP > Ch > Cl > Ap
BMS-POS	Ap > Cl > Fp > Ch	Ch > FP > Ap > Cl
BMS-WebView-1	Ap > FP > Cl > Ch	Ch > FP > Ap > Cl
BMS-WebView-2	Ap > FP > Ch > Cl	Ch > FP > Ap > Cl

Ap: Apriori, FP: FP-Growth, Ch: Charm, Cl: Closet.

formance. It was concluded that the FP-Growth was a stable algorithm in various situation [12].

F. FP-Growth Algorithm

FP-Growth is one of the algorithms in producing association rule. This algorithm is conducting mining frequent pattern using FP-Tree which has been previously developed [11]

Algorithm 2. FP-Growth: Mining Frequent Pattern Using FP-Tree with Pattern Fragment Growth

Input: a DB database represented by FP-Tree which has been developed based on Algorithm 1 and desired minimum support

Output: the complete collection of frequent pattern

Method: Calling FP-Growth function (Tree, null)

Procedure FP-Growth (Tree, a)

```

{
  if Tree contains path having single prefix Then
  {
    P = part of Tree having single prefix;
    7 part of multipath Tree, changing the top node with null root;
    For each combination (notated as β) from nodes in path P do {
      generate pattern β ∪ a with support = minimum support from nodes in β;
      freq_pattern_set(P) = result from generate pattern β;
    }
  }
  Else
  {
    Q = Tree;
    for each item 2 in Q do {
      generate pattern β = ai ∪ a with support = ai.support;
      construct conditional pattern-base from β and conditional FP-Tree from β Treeβ;
      if Treeβ <> empty then call FP-growth(Treeβ, β);
      freq_pattern_set(Q) = result from generate pattern β;
    }
  }
  12
  return (freq_pattern_set(P) ∪ 12
  freq_pattern_set(Q) ∪ (freq_pattern_set(P) x
  freq_pattern_set(Q));
}
    
```

III. RESEARCH METHOD

Fig. 1 is the research method stages. The first step in this research is the identification of needs. The case study in this research is a supermarket in Surabaya, Indonesia which has been operating for more than 10 years. Stored transaction data has not been well utilized to improve the competitiveness of supermarkets in the midst of the increasingly widespread mini market business in Surabaya.

The second step is data collection and analysis. The researcher collects the sales transaction data for the last 5 years and then analyzes the data. From the result of data analysis, the process to determine the method used in managing the data into information useful for the user to improve the company business strategy. In this process, we had used market basket analysis method with FP-Growth algorithm. The next steps are the process design, implementation and testing.

A. Identification Needs

From those above problems, it was concluded that the owner of X Supermarket needed an IT-based system to assist him in decision making process. The criteria of the system were as follows:

- Data mining application that can produce information on the level of association in the inter data of the goods. The required system has to have a multi dimension concept

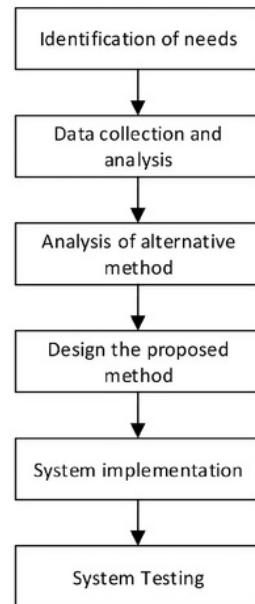


Fig. 1. Research method.

showing the existing relation. The dimension used is the dimension of the goods, customers, suppliers and time.

- The required system can provide information on sales transaction to the owner of X Supermarket.

B. Data Collection and Analysis

X Supermarket had more than 16,000 types of goods. X Supermarket had already had an IT-based system since 2006. All transaction data had been saved into a database. The big amount of data had not been much used to produce meaningful information. The promotion for sales often just trailed the promotion of the supplier. The product bundling had also been based on estimation. Besides, the purchase of goods had also been based on current condition and estimation. The owner had not been using the previous transaction for decision making process. Therefore, X Supermarket needed an application able to process the transaction data into useful information for top-level management in the decision making process. The source of data used in X Supermarket can be viewed at Fig. 2. There were five tables such as: saving goods category data, goods data, customer data, sales data and detailed purchasing data.

C. System Design

The design of the module was started by designing the overall system design using data flow diagram (DFD). There were some processes conducted, among others:

- The setting process was a process in setting the period of data being used, filter and minimum support. This process needed the data in the form of transaction period and minimum support from external entity user.
- The preprocessing process was a preparation process

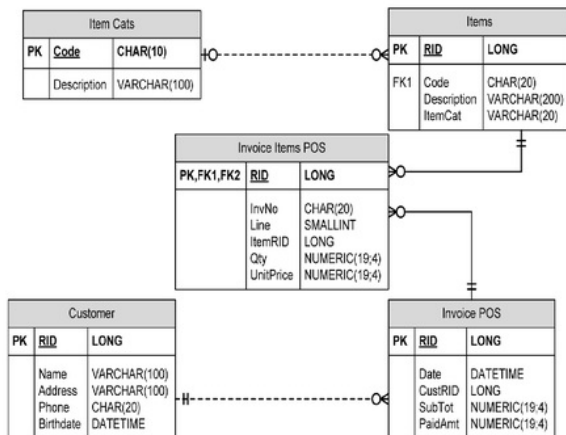


Fig. 2. ERD on X Supermarket sales system.

toward the data processed at the next stage. This process covered the cleaning process toward the invalid data and the interval arrangement at the data needed to be normalized. The required data for this process was the transaction data and the product price data from the database. The result of this process was a processed data.

- The generate frequent itemsets process was a process for forming frequent itemset. This process required the data on transaction period, filter and minimum support from database setting, and the transaction data from the database. This process resulted in the form of frequent itemset saved at HT and PHT data store.
- The generate FP-Tree process was a process on developing FP-Tree based on the data from the process of generate frequent itemsets. The result of this process was FP-Tree which would be used later at the next process.
- The generate association rule process was a process to produce association rule. This process required the data in the form of FP-Tree from the process of generate FP-Tree, conditional pattern-base from the database rule criteria and minimum confidence from the external entity user. The result of this process was conditional-pattern base, frequent pattern base and association rule, saved in data store.
- The generate graph and report process was a process to present graphics and reports. The data required was in the form of type and content of the graphics as well as reports to be presented to the owner. This result of this process was graphics and reports.
- The sales process has been available at Odoo and was not covered at this research. This process is the process on sales requiring customer and product data. This process produces transaction data. Those data were inputted into the database. The data from the database will be used at the process of preprocessing.

D. Design the Proposed Method

The data is taken from company data source. After that, the data is inserted into the table in the Odoo database as follows:

- Table PRODUCT_TEMPLATE: contains product template data.
- Table PRODUCT_PRODUCT: contains data product master data.
- Table PRODUCT_CATEGORY: contains product category data.
- Table SALES_ORDER: contains sales transaction data.
- Table SALES_ORDER_LINE: contains detailed sales transaction data.

Fig. 3 is the design of flowchart and algorithm of MBA data mining module.

Setting process is a process to set the time range of data to

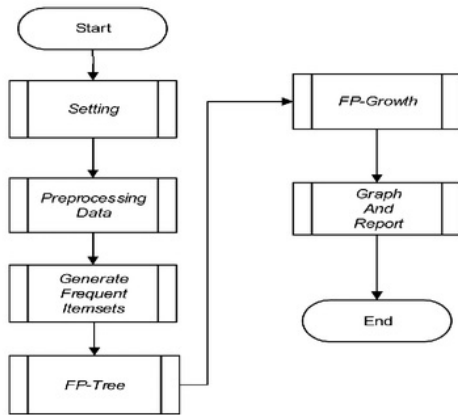


Fig. 3. System flowchart.

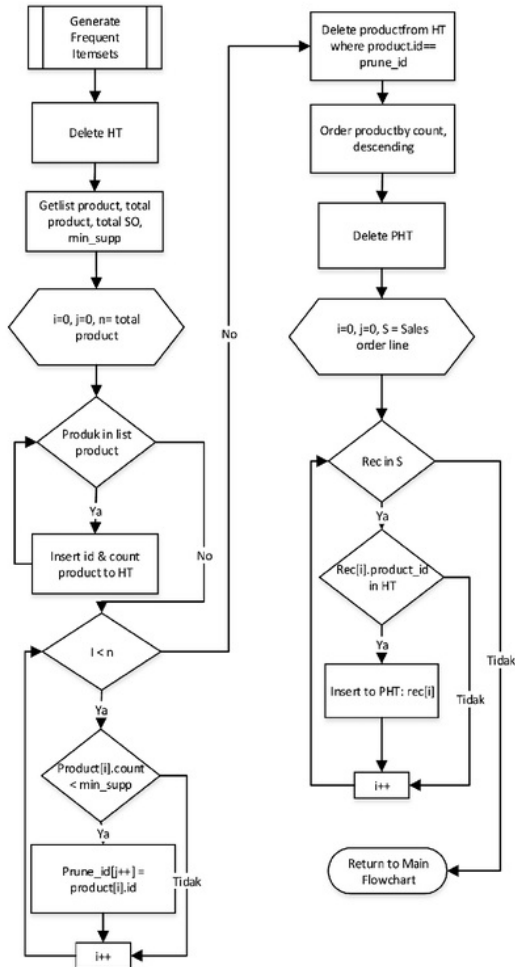


Fig. 4. Generate frequent itemsets flowchart.

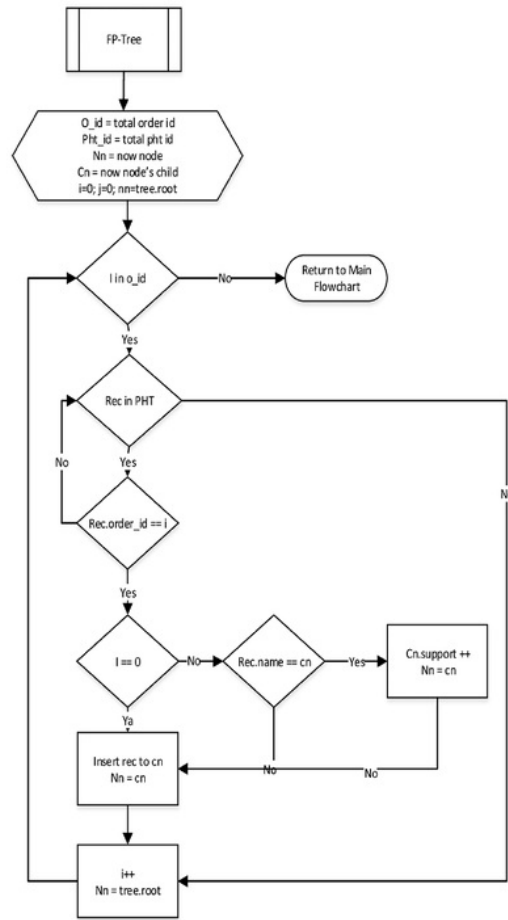


Fig. 5. Generate FP-Tree flowchart.

be used and minimum support for mining process. The data preprocessing process was retrieving data in accordance with the desired period of user. The data through this process is the sales transaction and sales detail data. In the process of generating frequent itemsets (Fig. 4), the system will read the sales data. Items that have support equal to or more than the minimum support will be saved into the header table. The items in the header table corresponding to the sales data will be stored into the IPM table for reference in the creation of the FP-Tree.

Fig. 5 is a tree-building process, in which FP-Tree is formed according to the IPM table. FP-Tree is used to simplify the path retrieval process of each item.

In the generating association rule process, it will generate some combination of items that often occur in X Supermarket sales data. Combination results obtained through FP-Growth algorithm.

IV. RESULTS AND ANALYSIS

The application was developed using Python programming language at Odoo framework using PostgreSQL database. As described at DFD, there were several processes conducted. This testing was conducted in accordance to those processes. This paper did not show the two starting processes: setting and preprocessing.

A. Generate Itemset

At the generate itemset function there were two main menus: header table (HT) and frequent header table (FHT). These menus were used to process the data before being able to be entered into the tree. At the sample case, the dimension processed was product dimension. So the item data entered into the HT was the product type only. Based on the minimum support that had been set as 0.2% from the total transaction, 316 items at HT fulfilled the minimum support. This result can be seen at the HT as shown at Fig. 6.

The FHT can be seen at Fig. 7. This figure shows that the products with ID 8033 and 9055 were at the same transaction, which was transaction 13091. The item was saved according to the order of the HT from the smallest up to the biggest. The data from the FHT was later formed into a tree.

B. Generate FP-Tree

At the generate FP-Tree function, there were two menus: update and view FP-Tree. These menus were used to form

ID	Item	Type	Count	Order
13093	8013	product	103	1
13093	9014	product	109	2
13093	8033	product	144	3
13429	10081	product	91	4
13010	8026	product	76	5
13074	9011	product	58	6
13093	9056	product	53	7
13097	8744	product	50	8
13022	9056	product	47	9
13060	8757	product	47	10
13084	3153	product	47	11
13055	9098	product	40	12

Fig. 6. Header table.

Order ID	ID in HT	Item ID	Type	Support	Order from HT
134091	8033	8033	product	144	3
134091	9055	9055	product	53	7
134196	9076	9076	product	58	9
134196	10081	10081	product	91	4
134196	10465	10465	product	17	25
134196	8942	8942	product	10	160
134196	10447	10447	product	13	148
134196	9064	9064	product	12	124
134117	10424	10424	product	14	122
134239	10602	10602	product	19	40
134239	10244	10244	product	47	11
134385	10548	10548	product	25	41

Fig. 7. Update frequent header table.

FP-Tree from the data originated from FHT. At the update FP-Tree, the system conducted the forming of a tree. The system was then reading the data of the FHT, then the data having the same selling ID was united into one path. The result from this function became a tree which can be viewed at the menu of view FP-Tree at Fig. 8.

C. Generate FP-Growth

At the FP-Growth function, there were two menus: View Conditional Pattern Base and View Generated Pattern Set. The path for each item at the HT was presented at the menu

```

FP Tree
├── /-10839, 5, 0
│   ├── /-10623, 9, 010449, 1, 0-10361, 1, 0
│   ├── /-10411, 5, 010331, 1, 0-10486, 1, 0
│   └── /-10513, 6, 0
├── /-10348, 6, 0-10523, 1, 0
│   ├── /-10511, 1, 0
│   ├── /-10537, 1, 0
│   └── /-10308, 4, 0

```

Fig. 8. FP-Tree.

Item	Conditional Pattern Base	Support
10336	10365	1
10039	10070	1
10039	10383, 10442	1
10039	10407	1
10039	10393	1
10023	10365	1
10023	10543, 10554	1
10013	10534, 10578	1
10023	10240	1

Fig. 9. The view conditional pattern menu interface.

Set	Support
10075	50
10023	50
10415	50
10013	50
10149	50
10039	50
10023	50
10407	50
10360	50
10241	50
10507	50
10402	50
10088	50
10088	50
10370	50
10019	50
10019	50
10019	50

Fig. 10. The interface of view generated view pattern menu.

of View Conditional Pattern Base. At this case study, 1,878 conditional pattern base were generated, each with its support as seen at Fig. 9.

The view frequent itemset menu showed the frequent pattern set and support from each pattern set. At the case study, 319 pattern sets were generated with the support showing how many times that patten appeared at the transaction. Fig. 10 shows that at 10,639 pattern item, there were 10 transactions. The 16th line indicates that the item pattern 10,365 and 10,591 appeared together at the transaction 11 times as seen at Fig. 10.

D. Generate Association Rule

At the Generate Association Rule function, there were three menus: Table View, Narrative Views, and Chart View. At the Table View menu, the result of the rule was displayed in the form of a table showing the support and confidence from each table. At this study case, six rules were resulted as shown at Fig. 11. The rule at the first line means that the products of eggs were bought together with sugar with 0.25% support and 6.01% confidence.

Antecedent	Consequent	Support	Confidence
product TELUR HORN CURAH,	product GULA PASIR,	0.25	6.01
product GULA PASIR,	product TELUR HORN CURAH,	0.25	6.92
product INDOMIE GORENG SPESIAL 80GR,	product TELUR HORN CURAH,	0.23	6.94
product TELUR HORN CURAH,	product INDOMIE GORENG SPESIAL 80GR,	0.23	5.46
product INDOMIE GORENG SPESIAL 80GR,	product INDOMIE KARI AYAM 70GR,	0.25	7.64

Fig. 11. The interface of table view menu.

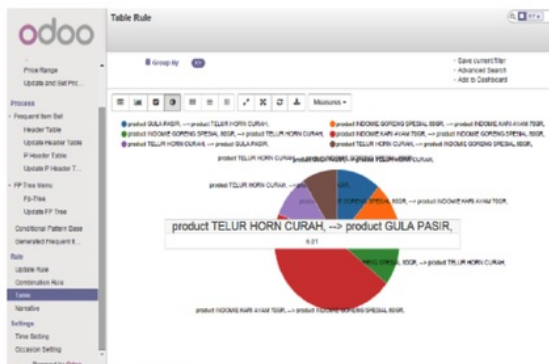


Fig. 12. Pie diagram for the confidence of the pattern set.

Fig. 12 displays the pie diagram for each pattern set. One of the pattern sets as when eggs were bought then sugar have to be bought as well, shows 6.01% confidence.

V. CONCLUSION

Based on the result of the design and development of the application, it can be concluded that the development of the application was able to complete the features provided by Odo. The FP-Growth algorithm used at the application was able to produce multidimensional association rules.

ACKNOWLEDGEMENTS

This research was funded by DIPA Directorate General of Research and Development Reinforcement (Direktorat Jenderal Penguatan Riset dan Pengembangan).

REFERENCES

- [1] L. W. Santoso and Yulia, "Data warehouse and big data technology for higher education," *Procedia Computer Science*, vol. 124, pp. 93–99, 2017. DOI: 10.1016/j.procs.2017.12.134.
- [2] G. Moss, *Working with openERP*. Brimingham: Packt Publishing, 2013.
- [3] D. Reis, *Odoo Development Essentials*. Brimingham: Packt Publishing, 2015.
- [4] S. Riggs and H. Krossing, *PostgreSQL 9 Administration Cookbook*. Brimingham, UK: Packt Publishing, 2010.
- [5] M. Narvekar and S. F. Syed, "An optimized algorithm for association rule mining using FP tree," *Procedia Computer Science*, vol. 45, pp. 101–110, 2015. DOI: 10.1016/j.procs.2015.03.097.
- [6] D. T. Larose, *Discovering Knowledge in Data: an Introduction to Data Mining*. Hoboken, NJ: John Wiley & Sons, 2005.
- [7] J. Han, M. Kamber, and J. Pei, *Data Mining: Concepts and Techniques*, 3rd ed. San Fransisco, CA: Morgan Kaufman, 2012.
- [8] X. D. Wu and V. Kumar, *The Top Ten Algorithms in Data Mining*. Boca Raton, FL: CRC Press, 2009.
- [9] P. T. Tan, M. Steinbach and V. Kumar, *Introduction to Data Mining*. Boston, MA: Pearson, 2005.
- [10] J. Li and D. T. Ming, "Research of an association rule mining algorithm based on FP tree," in *Proceedings of IEEE International Conference on Intelligent Computing and Intelligent Systems*, Xiamen, China, pp. 559-563, 2010. DOI: 10.1109/ICICISYS.2010.5658443.
- [11] J. Han, J. Pei, Y. Yin, and R. Mao, "Mining frequent patterns without candidate generation: a frequent-pattern tree approach," *Data Mining and Knowledge Discovery*, vol. 8, no. 1, pp. 53–87, 2004. DOI: 10.1023/B:DAMI.0000005258.31418.83.
- [12] Z. Zheng, R. Kohavi, and L. Mason, "Real world performance of association rule algorithms," in *Proceeding of the 7th ACM SIGKDD International Conference on Knowledge Discovery and Data Mining*, San Francisco, CA, pp. 401–405, 2000. DOI: 10.1145/502512.502572.



Yulia

is a professor in Informatics Department, Petra Christian University, Surabaya, Indonesia. She received her bachelor degree in Informatics Department from Surabaya University, Indonesia, and master degree in Information Technology from University of Indonesia. Her research interests are enterprise resource planning and data mining.



Gregorius Satia Budhi

is a professor in Informatics Department, Petra Christian University, Surabaya, Indonesia. He received his bachelor degree in Informatics Department from Institute Technology Adhi Tama, Surabaya, Indonesia, and master degree in Computer Science from Institute Technology 10 Nopember, Surabaya, Indonesia. His research interests are artificial intelligence, data mining/ machine learning.



Stefani Natalia Hendratha

is a practitioner in information technology. She received her bachelor degree in Informatics Department from Petra Christian University, Surabaya, Indonesia. Her research interests are information system and data mining.

Paper 1

ORIGINALITY REPORT

11%

SIMILARITY INDEX

3%

INTERNET SOURCES

9%

PUBLICATIONS

3%

STUDENT PAPERS

PRIMARY SOURCES

- 1** Ming Zhou. "Improved pattern tree for incremental frequent-pattern mining", Transactions of Tianjin University, 04/2010 1%
Publication

- 2** Rathi, Sheetal, and Chandrashekhar A. Dhote. "Using parallel approach in pre-processing to improve frequent pattern growth algorithm", 2014 International Conference on Information Systems and Computer Networks (ISCON), 2014. 1%
Publication

- 3** Xiujin Shi, Shaozong Chen, Hui Yang. "DFPS: Distributed FP-growth algorithm based on Spark", 2017 IEEE 2nd Advanced Information Technology, Electronic and Automation Control Conference (IAEAC), 2017 1%
Publication

- 4** Chaoyu Hao, Yanling Chen, Jiren Wang, Cunbao Deng, Guang Xu, Fengwei Dai, Rui Si, Hongfei Wang, Haoyu Wang. "Study on the Effect of Iron-Based Deoxidizing Inhibitors for 1%

Coal Spontaneous Combustion Prevention", Energies, 2018

Publication

5	www.neliti.com Internet Source	1%
6	Liliana Liliana, Singgih Mardianto Soephomo, Gregorius Satia Budhi, Rudy Adipranata. "Chapter 4 Segmentation of Hanacaraka Characters Using Double Projection Profile and Hough Transform", Springer Nature America, Inc, 2018 Publication	1%
7	Xi Fu, Lei Shi, Jing Li. "Balanced Parallel Frequent Pattern Mining over Massive Data Stream", 2017 IEEE Third International Conference on Big Data Computing Service and Applications (BigDataService), 2017 Publication	<1%
8	ppsf.ikelab.net Internet Source	<1%
9	T Andi, E Utami. "Association rule algorithm with FP growth for book search", IOP Conference Series: Materials Science and Engineering, 2018 Publication	<1%
10	Mahdi Khosravi, Mohammad J. Tarokh. "Dynamic mining of users interest navigation	<1%

patterns using naive Bayesian method",
Proceedings of the 2010 IEEE 6th International
Conference on Intelligent Computer
Communication and Processing, 2010

Publication

11

Alexander Setiawan, Silvia Rostianingsih,
Timotius Reinaldo Widodo. "Augmented reality
application for chemical bonding based on
android", International Journal of Electrical and
Computer Engineering (IJECE), 2019

Publication

12

Xiang-Ping Meng, Jin Qian, Xin Qi. "Parallel
mining association rules with bit string array in
large database", Proceedings of the 2003
International Conference on Machine Learning
and Cybernetics (IEEE Cat. No.03EX693), 2003

Publication

13

Younghee Kim. "Finding Frequent Itemsets
Using Weighted Support in Windowed
Streaming Model", 2009 2nd International
Conference on Computer Science and its
Applications, 12/2009

Publication

14

Sahoo, Jayakrushna, Ashok Kumar Das, and A.
Goswami. "An efficient approach for mining
association rules from high utility itemsets",
Expert Systems with Applications, 2015.

Publication

<1%

<1%

<1%

<1%

15 Submitted to Texas A&M University - Commerce <1 %
Student Paper

16 www.journal.bonfring.org <1 %
Internet Source

17 Submitted to UNITEC Institute of Technology <1 %
Student Paper

18 S. Vimala, V. Khanaa, C. Nalini. "A study on supervised machine learning algorithm to improvise intrusion detection systems for mobile ad hoc networks", Cluster Computing, 2018 <1 %
Publication

19 confcats_isif.s3.amazonaws.com <1 %
Internet Source

20 www.slideshare.net <1 %
Internet Source

21 Xiaowei Yan, Shichao Zhang, Chengqi Zhang. "ON DATA STRUCTURES FOR ASSOCIATION RULE DISCOVERY", Applied Artificial Intelligence, 2007 <1 %
Publication

22 Abir Derouiche, Abdesslem Layeb, Zineb Habbas. "Chemical Reaction Optimization Metaheuristic for Solving Association Rule Mining Problem", 2017 IEEE/ACS 14th International Conference on Computer Systems <1 %

and Applications (AICCSA), 2017

Publication

23

era.library.ualberta.ca

Internet Source

<1%

24

"Parallel Implementation of FP Growth Algorithm on XML Data Using Multiple GPU", Advances in Intelligent Systems and Computing, 2015.

Publication

<1%

25

Zhu Yu-quan, Yang He-biao, Song Yu-qing, Xie Cong-hua. "Research on algorithm for mining negative association rules based on frequent pattern tree", Wuhan University Journal of Natural Sciences, 2006

Publication

<1%

26

Submitted to University of Technology, Sydney

Student Paper

<1%

27

aip.scitation.org

Internet Source

<1%

28

Submitted to TSU, University College

Student Paper

<1%

29

Submitted to Özyegin Üniversitesi

Student Paper

<1%

30

"Information Science and Applications (ICISA) 2016", Springer Science and Business Media LLC, 2016

Publication

<1%

Exclude quotes On

Exclude bibliography On

Exclude matches < 5 words