

DIMENSI

Journal of Architecture and Built Environment



Published by:
The Institute for Research and Community Service
Petra Christian University Surabaya-Indonesia

JULY 2014

Vol. 41 No. 1

ISSN 0126-219X (Print)
ISSN 2338-7858 (Online)

DIMENSI – Journal of Architecture and Built Environment

Editor-in-Chief

Danny Santoso Mintorogo (Petra Christian University, Surabaya, Indonesia)

Associate Editors-in-chief

M.I. Aditjpto (Petra Christian University, Surabaya, Indonesia)
Nugroho Susilo (Petra Christian University, Surabaya, Indonesia)
Liliany S. Arifin (Petra Christian University, Surabaya, Indonesia)
J. Loekito Kartono (Petra Christian University, Surabaya, Indonesia)
Rully Damayanti (Petra Christian University, Surabaya, Indonesia)

International Editorial Members

John Spencer Reynolds (University of Oregon, Eugene, USA)
Florian Kossak (The University of Sheffield-Sheffield, UK)
Veronica I. Soebarto (Adelaide University, Australia)
Mohd. Hamdan Bin Ahmad (Universiti Teknologi Malaysia, Johor, Malaysia)
Johannes Widodo (National University of Singapore, Singapore)
Mohd. Arif Kamal (Aligarh Muslim University, Aligarh, India)
Prasasto Satwika (Atmajaya University Yogyakarta, Indonesia)
Antariksa (University of Brawijaya, Malang, Indonesia)

Cover designer : Bernadette Dian Arini Maer
Administrative assistant : Sumarno

Aim and Scope

Journal of DIMENSI is a peer-reviewed journal devoted to the applications of architecture theory, sustainable built environment, architectural history, urban design and planning, as well as building structure. We accept National and International original research articles which are free of charge at this moment. The manuscript will be reviewed by two independent National or International reviewer boards who are in their expert field.

DIMENSI is published, twice a year, in July and December, by the Institute for Research and Community Services, Petra Christian University, Surabaya-Indonesia. DIMENSI will be distributed to other universities, research centers, and International editorial boards as well as to regular subscribers.

DIMENSI History

DIMENSI: Jurnal Teknik Arsitektur was named from May 1980 till July 2008, then the name has been changed to DIMENSI: Journal of Architecture and Built Environment since Vol. 36 No. 2 December 2008.

DIMENSI Homepage

DIMENSI is accessible full articles online at E-Journal: <http://dimensi.petra.ac.id> or <http://puslit2.petra.ac.id/ejournal/index.php/ars/>, Indexed by Google Scholar.

DIMENSI Printed (ISSN 0216-219X). Reg. No. 799/B.23/1980 date May 7, 1980. Online ISSN: 2338-7858

Editorial and Administrative Address:

Institute of Research and Community Outreach, Petra Christian University,
Jl. Siwalankerto 121-131, Surabaya 60236, Indonesia.
Phone : (031) 8494830/849040, extension 3139-3147. Fax: (031) 8436418, 8492562
E-mail : puslit@petra.ac.id.
Homepage : <http://puslit.petra.ac.id>

Contents

Original Articles

- 1 **The People's Perceptions on Aesthetic and Uses of the Active Urban Parks in Surabaya**
KWANDA, Timoticin; KARTONO, Lukito and WONOSEPUTRO, Christine
- 11 **The Patembayan Concept to Spatial Changes of Candirejo Tourism Village**
SARI, Suzanna Ratih; SOEWARNO, Nindyo; NURYANTI, Winchi and PRAMITASARI, Diananta
- 19 **Gnostic View in Contemporary Islamic Architecture (In Case of Ardalan)**
AGHAEI RAD, Hamid
- 29 **Transitional Shelter for Disaster Victims: Bamboo Core and Incremental Houses**
JULISTIONO, Esmike Kristi; MAER, Bisatya Wicksdyta and ARIFIN, Liliany Sigit
- 37 **The Concept of Modern Dutch Colonial Architecture to the Development of Javanese Architecture**
ARDYANTO, Antonius; DJUNAEDI, Achmad; IKAPUTRA, Suryabrata and DJADMIKA, Adi
- 43 **Eng Shui in Modern House Design Searching for the Rationale and Possible Impacts Assessment**
OCTAVIA, Linda and GUNAWAN, Tarnesvidjaja
- 51 **The Matrilineal Architectural Values on the Construction of the Minangkabau House**
HARDONO, Setiawan; BAHAUDDIN, Azizi; ABDULLAH, Aldrin and MALIKI, Nor Zariyah

Information for DIMENSI Article Contributors

The Editorial Board welcomes articles, research reports that have never been submitted for consideration nor published elsewhere.

The writing guidelines are as follows:

1. **Manuscripts** must be in English, typed in MS Word, single-spaces, not more than 15 pages (including figures and tables), and email to
Chief Editor e-mail:
dannysm@petra.ac.id

Or **E – Journal website:**
(<http://puslit2.petra.ac.id/ejournal/index.php/ars/>).
2. **The heading** should be: (1) not more than 12-word, (2) the contributor(s), (3) the complete affiliation(s) and address(s), and (4) separate page.
3. **An abstract** of not more than 150 words should be at the beginning of the manuscript and is followed by key words::::
4. **Introduction and other headings** should be marked clearly. First paragraph of each heading and subheading should not be indented. The second paragraph should be indented by 5 points. The international system of units (SI units) should be applied. Equations should be given on separate lines with the equation number in parenthesis at the right margin.
5. **All figures** must have number and place under the figure: if the figure is cited then the first contributor's name as the resourcer must be stated, (Figure 1, Abcde, source: abcd).
6. **All tables** are given in SI number on the top right. The tables are numbered consecutively and should not duplicate data found elsewhere in the manuscript.

7. **Acknowledgment** of collaboration or preparation may be included before the references.

8. **References** should conform the following format:

book

Stein, B., Reynolds, J.S., Grandzik, W.T. & Kwok, A.G. (2006). *Mechanical and Electrical Equipment for Buildings*, 10th edition, New Jersey: John Wiley & Sons.

journal (with 2 to 5 authors):

Spence, R.J.S., Keiman, L., Baxter, P.J., Zuccaro, G. & Petrazzulli, S. (2005). "Residential Building and Occupant Vulnerability to Tephra Fall", *Journal of Natural Hazards and Earth System Sciences*, 5, p. 477-494.

journal (with 5 more authors):

Oberndorfer, E. et al. (2007). "Green Roof as Urban Ecosystems: Ecological, Structures, Functions and Services", *Journal of BioScience*, 37(10), p. 820-833.

conference:

Wang, G. & Zhu, Y.X. (2007). "How to Develop District Cooling in China with Success", *The 6th International Conference on Indoor Air Quality, Ventilation & Energy Conservation in Buildings*, Oct. 28-31, Sendai-Japan, p. 765-771.

9. **Appendixes** are not to be permitted to the journal (all figures and tables should be included in the body text).

10. **Authors are in charge of obtaining permission** to reproduce any of figures and tables used from other copyright owners or publishers.

11. **Corresponding author's e-mail** must be given for more than two authors and up in the manuscript.

12. Authors are urged to download and use the **DIMENSI journal template** directly from the website:
(<http://dimensi.petra.ac.id>)

Offprint

Upon publication, 2-copy of hard-paper journals will be mailed free of charge to the lead author of the manuscript.

THE RATIONALE AND THE IMPACT OF FENG SHUI APPLICATION IN MODERN HOUSE DESIGN

Linda Octavia,¹, Gunawan Tanuwidjaja¹,

² Duta Wacana Christian University, Architecture Program Study, Yogyakarta

¹ Petra Christian University, Architecture Program Study, Surabaya, Indonesia

Email address: gunte@peter.petra.ac.id

ABSTRACT

The Feng shui, the "wind-water", is a Chinese system of geomancy using the laws of both Heaven and Earth for harmony and balance of life with the positive qi. Feng shui is widely used to orient temples, palaces, shops, houses, and other structures, with the reference to local features such as bodies of water, stars, or a compass. The Feng shui also recommended the physical arrangements for manipulation and channeling the qi (positive or negative energy)

Although, Feng shui is related with traditional believe and propitious manner, but some of its principles are rational. Therefore, the research is conducted to any positive impacts of the feng shui application in modern house design. A home in Jakarta designed with Feng shui was analyzed. The strategies were later examined based on the sustainable architectural design principles, especially its impact on the home functionality.

Keywords: Feng shui, Sustainable Architectural Design, Rationale, Functionality

INTRODUCTION

The Feng shui, the "wind-water", is a Chinese system of geomancy using the laws of both Heaven and Earth for harmony and balance of life with the positive qi. Feng shui is widely used to orient temples, palaces, shops, houses, and other structures, with the reference to local features such as bodies of water, stars, or a compass. The Feng shui also recommended the physical arrangements for manipulation and channeling the qi (positive or negative energy) (http://en.wikipedia.org/wiki/Feng_shui).

Feng shui is widely accepted in China, Korea, Japan, Singapore, Thailand, Vietnam, Malaysia, and the Philippines (Guiley, R.,1991, quoted in Montenegro, M.,2003). And Feng shui came to the United States and other Western countries in the 1970s, also later was used by Donald Trump and Merrill Lynch (Singh, A.,2000, quoted in Montenegro, M., 2003). In 2001, Hong Kong billionaire businessman Eric Hotung decided selling the Senator Ted Kennedy's house that he bought earlier because of bad feng shui" (Trudeau, G., 2001, quoted in Montenegro, M., 2003). This more exposed the feng shui and made more people believing to the system, such as business people, merchants, home builders, real estate brokers, interior designers, corporate managers, regular home buyers, and spending enormously for the consultancy (Singh, A., 2000,Hanks, D. III, 2002, Yui,A., 2002, Heyamoto, L. 2002, Athens, J., 2000, quoted in Montenegro, M., 2003).

In Indonesia, the feng shui is also believed by many business persons and home owners. But, the Chinese Indonesian normally applied feng shui with lack of theory and consideration (<http://properti.kompas.com/kolom/fengshui>, <http://www.indofengshui.com/paidarea/index.php/Ko mpas.html>, <http://rumahminimalissederhana.com/category/fengshui-rumah/>, <http://www.qualife-fengshui.com/index.php/2-uncategorised/6-praktek-feng-shui-benarkah-dapat-memperbaiki-nasib-seseorang>, http://www.propertykita.com/artikel/fengshui/feng_s hui_yang_memberi_harmoni-1368.html).

Unfortunately, the feng shui application is inconsistent with Christianity. Therefore the Architecture Program Study of Petra University was discouraged to implement it. The research question to be answered is there any positive impacts of the feng shui application, related to the functionality.

The Goals of the Project were:

- To find whether the fengshui application improve the functionality of the architectural design,
- To find functional design solution for a house case study that is designed with feng shui

METHODOLOGY

The research was conducted with literature review and a house evaluation designed with the feng shui approach. The feng shui strategies were checked whether contribute positively to functional live of the home owners. Later, the positive recommendations would be differentiated from feng shui myths.

LITERATURE REVIEW

The main essence of feng shui is the Chi. It could be defined as energy or force that provide vitality, harmony, creativity, also moral courage. It also controls every aspect of the universe. And it was developed by Lao Tzu, Confucius, Mencius, between the sixth and fourth centuries B.C. (Guiley, R.,1991, quoted in Montenegro, M.,2003). The chi should be controlled not too flow quickly and not too flow slowly. And it could be destructive if totally blocked (Henwood,B., Choy,H., 1999, quoted in Montenegro, M.,2003). The chi could be divided into two element the yin (shade) and yang (light). And they should be in balance or complementing each others (Guiley, R.,1991, and Wong,E.,1997, quoted in Montenegro, M.,2003).

The Chinese cosmology actually tried to preserve the harmony of heaven, earth and human beings. The translation was that the heaven chi, earth chi, and

human chi, (social chi and personal chi) must be in the perfect harmony. And the feng shui could be described as a relationship study between the way of heaven, the earth and the human beings. Therefore, human can choose a life and place to live that harmonizes with the way of being human (ren tao). And this relationship is described by eight different combinations of three parallel unbroken and broken lines called trigrams (or Bagua), which described in the I Ching book (Henwood,B., Choy,H., 1999, and Wong,E.,1997, quoted in Montenegro, M.,2003).

Henwood and Choy (1999) recommended not to attract the negative energy (sha chi), which “strikes quickly in straight lines. Therefore, the straight pathways and other straight line design forms are to be avoided. On the other hand the positive energy (sheng chi) should be attracted, which moves along curved lines.

Spear, W., (1995) recommended to use Bagua for organising of the house. The Bagua is actually used as starting point from which all design decisions are made. The Bagua could be overlaid on the house. The architect or designers could use the basic design principles form Bagua. Basically the Bagua described 4 pairs such as: Heaven and Earth (the Universal Opposites, also masculine and feminine), Fire and Water (the Organic Opposites), Mountain and Lake (the Natural Opposites), Wind and Thunder) the Impulsive Opposites). The Heaven is the creative force, the essential spirit of all and is called the house of Helpful Friends

While The Earth is the receptive force or receiving Heaven’s blessing such as sun rays, rain and other forces and is called the house of Relationships. The Fire refers to internal light so it is called the house of Illumination. The Water flows through time like the human live therefore it is called the house of Journey. The Mountain cave is the symbol of introspection or called the house of Contemplation. On the other hand the Lake relates to the joyful expression in outer world and offspring therefore it is called the house of Creativity. Thunder is like the booming voice of our ancestors therefore it is called the house of Elders. Lastly the Wind is constant flow of good fortune given by the gift of life and represents the house of Fortunate Blessings. When all these houses are in the balance, then the home owner would be in state of harmony or the house of Unity (Spear, W., 1995).

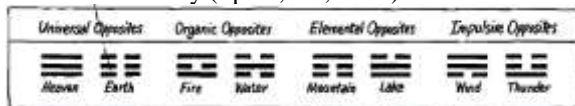


Figure 1. The Four Pairs of Trigrams or Bagua
Source: Spear, W., (1995).

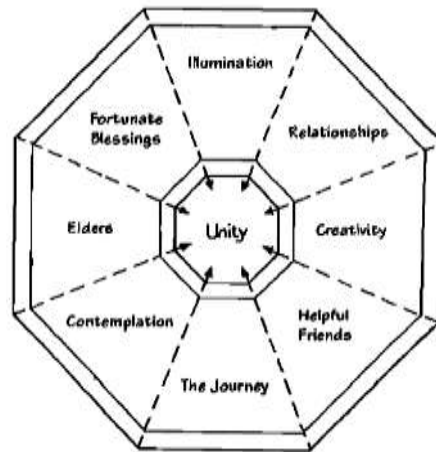


Figure 2. The Houses in the Trigrams or Bagua
Source: Spear, W., (1995),



Figure 3. The Trigrams or Bagua
Source: <http://www.impression-lifestyle.nl/files/2012/03/Feng-Shui-kleurencirkel.jpg>.

Spear, W., (1995) further explained that Bagua further could be superimposed on the house plan or called the Three-Door Gate of Chi. The Front Door is the “gate” which allow energy entering the home. The Bagua could be used directly for symmetrical and regular shape. It also could be stretched as long as each area remains proportionally. The Three Door Gate of Chi should be applied locating the Front Door at the bottom of page facing down.

Some steps recommended after placing the Bagua over the home plan are (Spear, W., 1995):

1. Negative Spaces,
 - Reclaim the negative space in the house (the area that is missing in the Bagua house) with mirrors.
 - Produce a symmetrical home plan with home expansion.
2. Poor Placement.
 - Not to place such as toilet that opens directly to a kitchen.
 - Not to locate toilets in the Wind (Fortunate Blessings), or opposite the front door, or are located in the centre of the house.

- Not to arrange the rooms and corridors that causes doors to bang into each other or obstruct or severely limit free passage.
- Not to design the doors opening into the hallway.
- Put the furniture (bed, desk or stove) to maintain a wide view to doorway or room.
- Put the furniture not directly opposite the door.
- Put the furniture not at the 45-degree point.

3. Kitchen.

- Consider the kitchen as the most important room in the home.
- Design a comfortable ceiling of the kitchen.
- Not to place stoves next to sinks or refrigerators.
- Not to put the stoves under windows or under skylights.
- If a stove is sited in a corner, allow an open view of the door.
- Place the stove that faces the east or light (South in the Northern hemisphere and North in the Southern Hemisphere).
- Design the eating areas with calm, clear, uncluttered, peaceful.

4. Bedroom or Sleeping Areas.

- As the room is for sleeping, design colours, artwork, and other objects to convey peace.
- Place TV, stereos, entertainment areas far away from the bed.
- Place the bedroom at the rear of a house, away from the front door.
- Place the bed not blocking closet doors or passage to dressing areas or bathrooms.
- When a bed must placed under slanted ceilings, install canopy covering the bed running parallel to the sleeping surface.
- Design side tables, headboards dressers, night stands, or valets with slightly rounded edges.

5. Living Areas.

- Design the living areas to be comfortable, well – lit.
- Design the seating save for occupants and guests.
- Place couches and chairs protected from behind with wall, bookcase or side table.
- Provide side or end tables nearby the seating located in the middle of the room.

Henwood,B. and Choy,H., (1999, quoted in Montenegro, M.,2003) recommended mingua (destiny number) calculation for the home owners (normally the breadwinner/ husband) to do first. It was started with calculation of the person's element (wood, fire, earth, metal, and water). And based on the mingua, the luckiest direction is found.

Other recommendations are also described by (Henwood,B. and Choy,H., 1999, quoted in Montenegro, M.,2003)

- The stove should be positioned toward the east and southeast of the kitchen because that is the direction for the wood element.
- Flushing the toilet with the lid open increases the chances that “your money will go too.”
- Cover your computer screen at night if it is in a bedroom so it won't “act as a mirror and disturb your spirit” in sleep.
- Hang curtains at the bottom of stairs or put a mirror on the landing to draw chi up so that chi does not flow down and out the door.
- To help chi rise up the stairs, put plants under the stairs or hang art that is “light and bright.”
- Because the kitchen is the money room, cooking on all burners with a variety of food will help bring in money.
- A home's front door should be simple and practical and face the sun so that it will attract “fame, fortune, and longevity.”
- Don't have the foot of your bed in line with the door; the bed's head should be on the north/south axis to be “in line with the magnetic energy of the earth.”
- A pointed roof (associated with fire) against a curved roof shape (associated with metal) is destructive since fire melts metal.

DISCUSSION AND RESULT ANALYSIS

Although, Feng shui is related with traditional believes and propitious manner, but some of its principles are quite rational. Therefore, the research is conducted to find the rationale of Feng shui application in modern house design. A home in Jakarta designed with Feng shui was analysed finding the rationale and the strategies. The strategies were later examined based on the sustainable architectural design principles, especially its impact on the home functionality.

The Leo House in Kelapa Gading, Jakarta is designed by Edy Hartono, the principal architect of EDHA Architects

(<http://www.edhaarchitects.com/profil.php>). The home site is 240 sqm, while the total building area comprises 552 sqm. And this home was assisted by feng shui master in the home zoning because the the owner believe that feng shui will increase the living quality. Later, the architect proposed a modern architecture into this building with functionality and aesthetic.

The concept of the home is simple but with a strong character. The building façades basically consist of geometric plane emphasized with vertical and horizontal lines. Lighting and air circulation is being optimized to the maximum in the interior design. At the stair area, a skylight is provided to create a “dramatic” effect. The skylight also produced adequate lighting to the dining area.

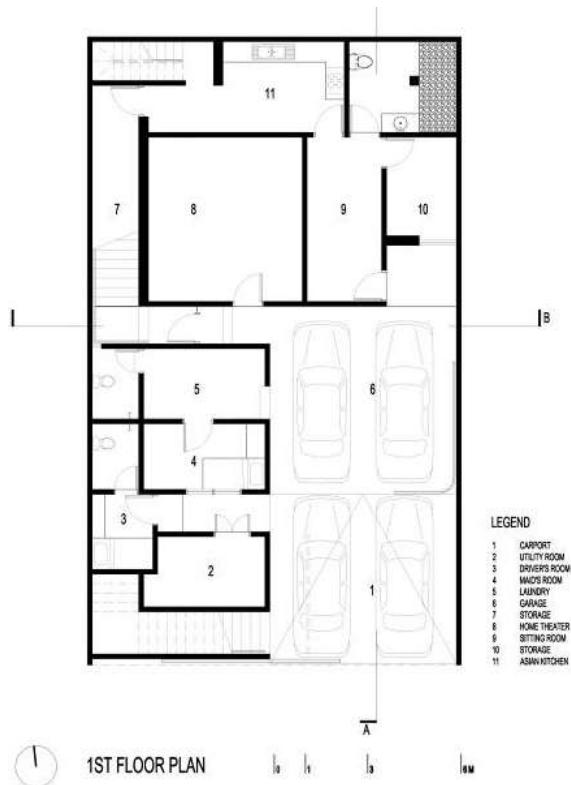


Figure 4. The First floor plan
 Source: <http://www.archdaily.com/112155/leo-house-edha-architects/>.

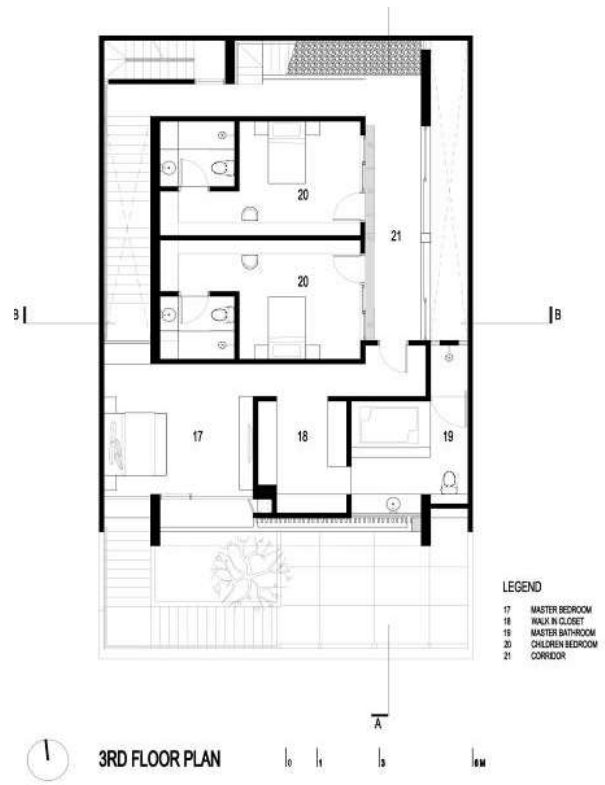


Figure 6. The Third floor plan
 Source: <http://www.archdaily.com/112155/leo-house-edha-architects/>.

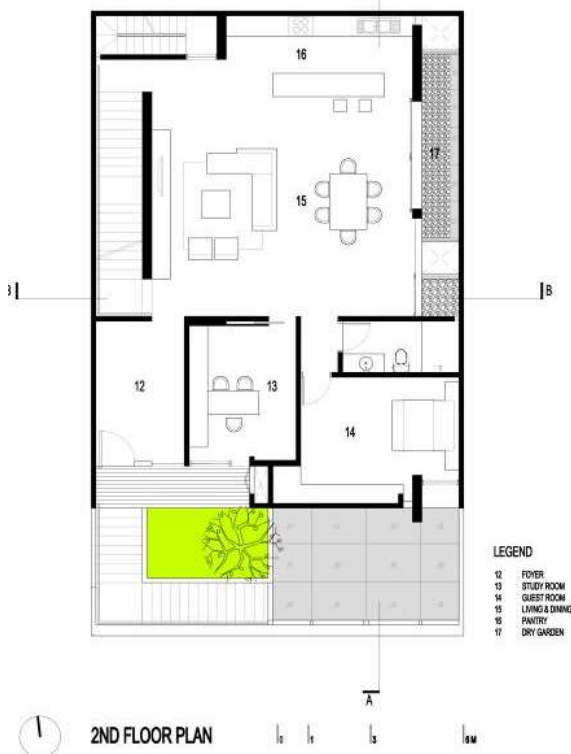


Figure 5. The Second floor plan
 Source: <http://www.archdaily.com/112155/leo-house-edha-architects/>.



Figure 7. The Front Facade
 Source: <http://www.archdaily.com/112155/leo-house-edha-architects/>.



Figure 8. The Interior

Source: <http://www.archdaily.com/112155/leo-house-edha-architects/>.

The Motto of the Architect is actually there is no perfect design. And his design is based on the theory, form, trend and the aim to achieving the best design quality. It should consider the contextual and well utilized. All aspects such as forms, styles, and materials, proportions, details, arts, and technologies also should be solved.

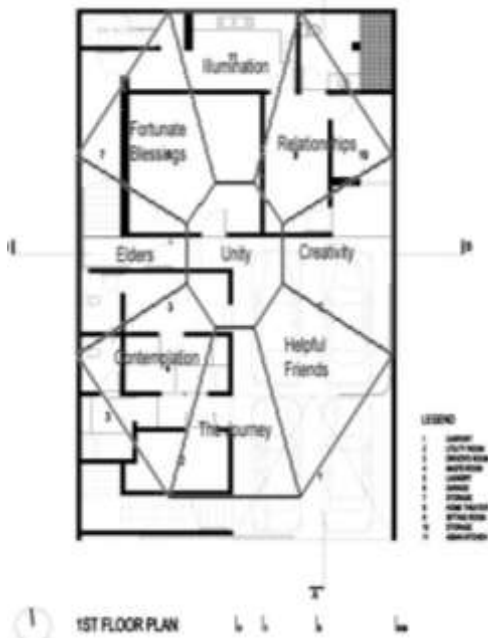


Figure 9. The First floor plan analysis according to the Bagua

Source: <http://www.archdaily.com/112155/leo-house-edha-architects/>.

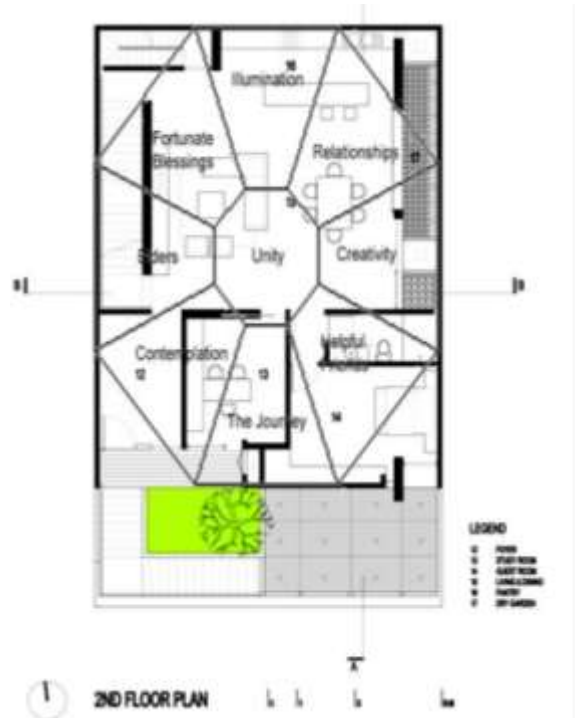


Figure 10. The Second floor plan analysis according to the Bagua

Source: <http://www.archdaily.com/112155/leo-house-edha-architects/>.

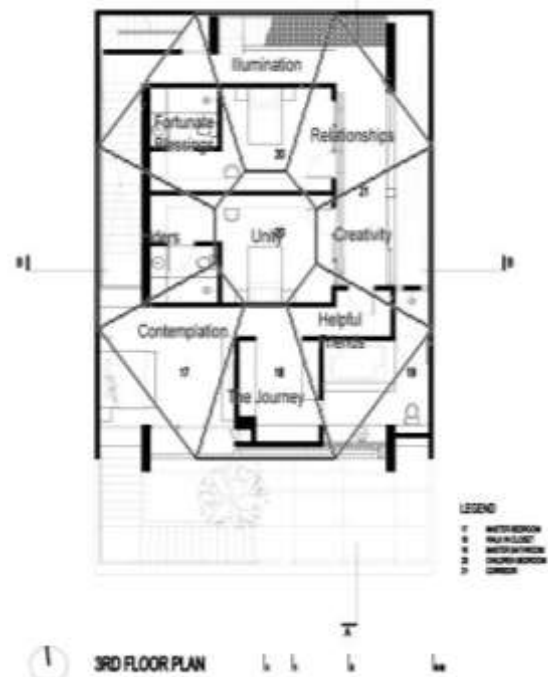


Figure 11. The Third floor plan analysis according to the Bagua

Source: <http://www.archdaily.com/112155/leo-house-edha-architects/>.

The Leo House was zoned based on the Bagua application. The Kitchens are located all in the Illuminations zone, while the Main Bedroom is located in the most private areas in the third floor in the Contemplation zone. The Guest Bedroom are located in the Helpful Friends zone and Living Room

is located in second floor in the Unity – Fortunate Blessings – Relationship – Creativity zone. The zoning actually proposed positive recommendation to the home design.

Furthermore, some feng shui recommendations are analyzed for positive rationale recommendation in the design.

Table 1. Comparison of Theory – Leo House and Positive Impact

Recommendation from Theory	Leo House	Positive or Negative Impact
1. Negative Spaces.		
Reclaim the negative space in the house (the area that are missing in the Bagua house) with mirrors.	Not	Neutral.
Produce a symmetrical home plan with home expansion.	Yes	Positive because of land utilisation and earthquake resistance.
2. Poor Placement.		
Not to place such as toilet that opens directly to a kitchen.	Yes	Positive because of reducing pest such as rats and cockroaches entering kitchen easily.
Not to locate toilets in the Wind (Fortunate Blessings), or opposite the front door, or are located in the centre of the house.	No, the children toilet is located in the Fortunate Blessings	Neutral for toilets in Fortunate Blessings. Positive for toilets in the centre of the house, because reducing dampness and indoor air pollution.
Not to arrange the rooms and corridors that causes doors to bang into each other or obstruct or severely limit free passage.	Yes in general, it only happen in the service area	Positive because reducing collusion for users.
Not to design the doors opening into the hallway.	Yes in general, it only happen in the service area	Positive because reducing collusion for users, especially in the blind school. But it might be negative for fire escape.
Put the furniture (bed, desk or stove) to maintain a wide view to doorway or room,	Yes in general, it only happen in the service area	Positive because better control to the room and optimise the spatial usage.

Recommendation from Theory	Leo House	Positive or Negative Impact
Put the furniture not directly opposite the door.	Yes in general, it only happen in the service area	Positive because not limiting the access and movement.
Put the furniture not at the 45-degree point	Yes in general, it only happen in the service area	Positive because reducing dangerous collusion with sharp objects.
3. Kitchen.		
Consider the kitchen as the most important room in the home.	Yes	Positive because considering the indoor air pollution.
Design a comfortable ceiling of the kitchen.	Yes	Positive because considering the indoor air pollution.
Not to place stoves next to sinks or refrigerators.	Yes	Positive because reducing the problem of electrical problems because of short circuit.
Not to put the stoves under windows or under skylights.	Yes	Positive because reducing the cooking spill to the window and reducing haze impact to skylight. But it is actually less possible because of current development of cooking hood.
If a stove is sited in a corner, allow an open view of the door.	Yes	Positive because providing escape to the door when fire happens.
Place the stove that faces the east or light (South in the Northern hemisphere and North in the Southern Hemisphere).	Yes the stove is located on the North	Neutral
Design the eating areas with calm, clear, uncluttered, peaceful.	Yes	Positive because providing functional and comfortable eating areas.
4. Bedroom or Sleeping Areas		
As the room is for sleeping, design colours, artwork, and other objects to convey peace.	Yes	Positive because providing functional, comfortable and

Recommendation from Theory	Leo House	Positive or Negative Impact
		peaceful sleeping areas.
Place TV, stereos, entertainment areas far away from the bed.	No	Neutral
Place the bedroom at the rear of a house, away from the front door.	No, the master bedroom is located at the front but in the third floor.	Positive because providing privacy.
Place the bed not blocking closet doors or passage to dressing areas or bathrooms.	Yes	Positive because providing functional, comfortable and peaceful sleeping areas.
When a bed must be placed under slanted ceilings, install canopy covering the bed running parallel to the sleeping surface.	Not found	Positive because reducing stress during the sleeping.
Design side tables, headboards dressers, night stands, or valets with slightly rounded edges.	Yes	Positive because reducing dangerous collusion with sharp objects.
5. Living Areas.		
Design the living areas to be comfortable, well – lit.	Yes	Positive because providing functional and comfortable living - dining areas
Design the seating save for occupants and guests.	Yes	Positive because providing functional and comfortable living - dining areas
Place couches and chairs protected from behind with wall, bookcase or side table.	No	Negative because reducing the spatial linkage
Provide side or end tables nearby the seating located in the middle of the room.	Yes	Positive because providing functional and comfortable living - dining areas
6. Other recommendations		
The stove should be positioned toward the east and southeast of the kitchen because that is the direction for the wood element.	No	Negative because might bring the air pollution during the east monsoon wind blowing.
Flushing the toilet with the lid open increases	No	Neutral

Recommendation from Theory	Leo House	Positive or Negative Impact
the chances that “your money will go too.”		
Cover your computer screen at night if it is in a bedroom so it won’t “act as a mirror and disturb your spirit” in sleep.	No	Neutral
Hang curtains at the bottom of stairs or put a mirror on the landing to draw chi up so that chi does not flow down and out the door.	No	Neutral
To help chi rise up the stairs, put plants under the stairs or hang art that is “light and bright.”	No	Neutral
Because the kitchen is the money room, cooking on all burners with a variety of food will help bring in money.	No	Neutral
A home’s front door should be simple and practical and face the sun so that it will attract “fame, fortune, and longevity.”	Yes	Positive because promoting easiness to way find to the home.
Don’t have the foot of your bed in line with the door; the bed’s head should be on the north/south axis to be “in line with the magnetic energy of the earth.”	No	Neutral
A pointed roof (associated with fire) against a curved roof shape (associated with metal) is destructive since fire melts metal.	Yes	Neutral

Most of the feng shui recommendations brought positive impacts, but the others brought neutral impacts. On the other hand, the Christianity believes that the main intention of living is to be lucky. But the Christians live to trust God provision (Rome 8:28) and the permanent peace in Jesus (John 14:27). So the feng shui strategies should be analyzed by Christian architects and home owners, whether they bring positive functional, comfort and safety improvement or just following the superstitious reason.

CONCLUSION

The feng shui is a Chinese system of geomancy using the laws of both Heaven and Earth for harmony and balance of life with the positive qi. And the research found that many feng shui recommendations bring positive impact, on the other hand some others brought neutral impacts. Therefore, some feng shui strategies could be followed if bring positive functional, comfort

and safety improvement not following the superstitious reason.

ACKNOWLEDGMENT

We would like to thank:

- Liauw Toong Tjiek, S.T., M.S. [Aditya Nugraha] (The Head of Petra Library and Board of UNDK May 2013 - March 2014)
- Mr. Eddy Hartono, Principal of EDHA Architects
- Ir. J. Loekito Kartono, M.A., Lecturer of Architecture Program Study.
- Ir. Joyce M. Laurens, M.Arch., Lecturer of Architecture Program Study.

References

Guiley, R., (1991), Harper's Encyclopedia of Mystical and Paranormal Experience, Edison, Castle Books, NJ..

Henwood, B., Choy, H., (1999), Feng Shui: How to Create Harmony and Balance in Your Living and Working Environment, Pownal, Storey Books, VT.

Singh, A., (2000), "Luck Be a Stone Lion," Time, 3 July 2000.

Spear, W., (1995), Feng Shui Made It Easy, Designing Your Live with the Ancient Art of Placement, Harper Collins Publishers, San Fransisco.

Trudeau, G., (2001), Names and Faces, Washington Post, 13 January 2001, sec. C-3.

Wong, E., (1997), The Shambhala Guide to Taoism, Shambhala Publications, Boston.

Yui, A., (2002), "Feng Shui Captivates Canadians at Home and at Work," International Market News, 26 September 2002, <http://www.tdctrade.com/imn/02092604/marketrends048.htm>;

Visited websites:

Athens, J., (2000), "Bringing Harmony into Your Home," Gary (Indiana), Post Tribune, 12 March 2000, accessed online at http://www.veramarie.bizland.com/news_fengshui/news%20harmony.htm.

Heyamoto, L. (2002), "Feng Shui: Positive Spaces Aid Office Energy," Seattle Times, 12 November 2002, http://seattletimes.nwsourc.com/html/business/technology/134574297_fengshui12.html;

Montenegro, M., (2003), Feng Shui: New Dimension in Design, the Christian Research Journal, volume 26, number 1 (2003), accessed in <http://www.equip.org>

Hanks, D. III, (2002), "Feng Shui for Builders," Miami Herald, 22 August 2002, <http://www.miami.com/mld/miamiherald/3911456.htm>;

http://en.wikipedia.org/wiki/Feng_shui

<http://properti.kompas.com/kolom/fengshui>

<http://rumahminimalissederhana.com/category/fengshui-rumah/>

<http://www.archdaily.com/112155/leo-house-edha-architects/>

<http://www.edhaarchitects.com/profil.php>

<http://www.impression->

[lifestyle.nl/files/2012/03/Feng-Shui-kleurencirkel.jpg](http://www.impression-lifestyle.nl/files/2012/03/Feng-Shui-kleurencirkel.jpg)

<http://www.indofengshui.com/paidarea/index.php/Kompas.html>

http://www.propertykita.com/artikel/fengshui/fengshui_yang_memberi_harmoni-1368.html

<http://www.qualife-fengshui.com/index.php/2-uncategorised/6-praktek-feng-shui-benarkah-dapat-memperbaiki-nasib-seseorang>

