

ISSN 1793-8236

IACSIT

International Journal of Engineering and Technology

Vol.7, No.2, April 2015

www.ijetch.org

 **IACSIT PRESS**
— www.iacsitp.com —

Instruction of contribution

Aims and Scopes

IACSIT International Journal of Engineering and Technology (IJET) is a scholarly open access, peer-reviewed, interdisciplinary, quarterly and fully refereed journal focusing on theories, methods and applications in engineering and technology. IJET covers all areas of engineering and technology, publishing refereed original research articles and technical notes. The submitted articles are reviewed within approximately three months of submission and the accepted articles are published on the internet upon receiving the final versions.

Topics include, but are not limited to:

- Foundations of Science, Engineering and Technology: Information Theory, Theoretical Computer Science, Mathematical Linguistics, Automata Theory, Cognitive Science, Theories of Qualitative Behaviors, Artificial Intelligence, Intelligent Computational Technologies, Applied Mathematics and Statistics, Computational Intelligence, Soft Computing, Semiotics, Computational Biology and Bio-informatics, Intelligent Systems, Genetic Algorithms and Modeling, Fuzzy Logic and Approximate Reasoning, Artificial Neural Networks

- Applications of Science, Engineering and Technology: Manufacturing, Automation and Mobile Robots, Virtual Reality, Image Processing and Computer Vision Systems, Photonics Networks, Computational Biology, Genomics and Bioinformatics, Bioengineering, Brain Mapping, Language and Search Engine Design, User-friendly Man Machine Interface, Data Compression and Text Abstraction and Summarization, Virtual Reality, Finance and Economics Modeling and Optimization.

Find more topics but not limited in the website:

<http://www.ijetch.org/>

Manuscript Submission

Hard copy submissions can not be accepted. All submitted articles should report original, previously unpublished research results, experimental or theoretical, and will be peer-reviewed.

Paper Review

All published journal papers are refereed by the international competent researchers and scientists. Therefore, a full double-blind international refereeing process is used in which:

-Papers are sent to reviewers for their peer review process.

-The reviewers' recommendations determine whether a paper will be accepted / accepted subject to change / subject to resubmission with significant changes / rejected.

All papers are refereed, and the Editor-in-Chief reserves the right to refuse any typescript, whether on invitation or otherwise, and to make suggestions and/or modifications before publication.

Initial Paper Submission

Prospective authors are kindly invited to submit full text papers including results, tables, figures and references. Full text papers (.doc, .rft, .ps, .pdf) will be accepted only by e-mail: ijet@vip.163.com. All submitted articles should report original, previously unpublished research results, experimental or theoretical. Articles submitted to the IJET should meet these criteria and must not be under consideration for publication elsewhere. Manuscripts should follow the style of the IJET and are subject to both review and editing.

Final Paper Submission

Each final full text paper (.doc, .pdf) along with the corresponding signed copyright transfer form should be submitted by E-mail: ijet@vip.163.com.

Submission Instructions

When submitting papers for potential publication in the IJET, please submit an original editable file in one of the (.doc, .pdf) style files. All figures, images, tables, etc., should be embedded into the original file. Detailed instructions on preparing papers for submission can be found in the Template Paper or Latex Style and Copyright Transfer Form. Further information on the scope of the IJET is also available upon enquiry of prospective authors. Authors accept the terms of Honor Code and Plagiarism Statement for Paper Submission, and that the paper is original research contribution with the references properly cited in the manuscript.

Page Charges

Upon acceptance of a manuscript for publication, the author or his/her institution or company can publish the paper after registration. Extra hard copy of journal can be purchased upon the payment of 100 USD, and we will post the journal to you free of charge.

Find more information, please visit:

<http://www.ijetch.org>

Editor in Chief

Prof. Abdul Razaque, *University of Bridgeport, USA*

Editorial Board

Prof. Arbin Ebrahim, *Tuskegee University, USA*

Prof. Agarwal Ankur, *Florida Atlantic University, USA*

Prof. Nazir Ahmad Zafar, *University of Central Punjab, India*

Prof. Shobha G, *R.V. College of Engineering, India*

Dr. Le Hoang Son, *Hanoi University of Science, Viet Nam National University, Vietnam*

Dr. Ahmad Fairuz Bin Omar, *School of Physics, University Science Malaysia, Malaysia*

Prof. Muhamad Mat Noor, *Mechanical Engineering, Malaysia*

Prof. Dong-Chul Park, *Myong Ji University, Korea*

Prof. K. Balasubramanian, *European University of Lefke, Turkey*

Prof. Anjaiah Devineni, *Manipal University, India*

Dr. Kay Smarsly, *Ruhr-University Bochum Institute for Computational Engineering, Germany*

Prof. Mohamed Ben Haj Frej, *POST University, USA*

Prof. Nyembo Salama, *Pitney Bowes Presort Services, Bridgeport, USA*

Prof. Figueira F. M. Monteiro, *ULHT - Universidade Lusofona, Portugal*

Submission information

Papers should be submitted to our Paper Submission E-mail:

ijet@vip.163.com

And should be prepared in accordance with the Author Guide:

<http://www.ijetch.org/>

Subscriptions and Delivery

IJET is published with both online and print versions. The journal covers the frontier issues in the engineering and computer science. Printed copies of the journal are distributed to accredited universities and government libraries.

Print version: Interested librarians of the accredited universities and government libraries are welcome to apply for the free subscription and delivery of the journal, by sending us an email (ijet@vip.163.com) with their institution name, address, contact phone/fax number, email address, contact person and his/her position. After our staff has verified this information, our journal will be delivered to your libraries with no charge (note: the number of our journal's free print version is limited).

Online version: Interested librarians, engineers and computer scientists are also welcome to read the free online version of the journal, by sending us an email (ijet@vip.163.com) with their institution name, address, contact phone/fax number, email address, contact person and his/her position. After our staff has processed this notification, one can simply set up a link to our journal's web page. Then, you and your users can read the journal online freely.

All the papers in the journal are available freely with online full-text content and permanent worldwide web link. The abstracts will be indexed and available at major academic databases.

Call for International Editorial Board Members and Reviewers

Engineering and Technology experts are welcome to join the IJET as the members of the international editorial board or as reviewers. Interested persons can send us an email, along with their curriculum vitae (CV) to e-mail: ijet@vip.163.com.

Frequency: 6 issues per year

ISSN: 1793-8236

Subject Category: Engineering and Technology

Published by: International Association of Computer Science and Information Technology Press (IACSIT Press)

IACSIT International Journal of Engineering and Technology

CONTENTS

Volume 7, Number 2, April 2015

• Mechanical Engineering and Materials Science

- Dynamic Identification of All-FRP Pultruded Structures.....81
G. Boscato, A. Dal Cin, and S. Russo
- Analysis of Combustion Efficiency for Turbofan Engine Combustor Using MATLAB.....86
Yasin Şöhret, Önder Turan, and T. Hikmet Karakoç
- First Evaluation on Structural Behavior of All FRP Bolted Built-up Columns.....91
A. Adilardi and S. Russo
- Effects of Different Influence Factors on Static and Dynamic Analysis of Mooring Line.....95
Gang Ma, Liping Sun, Youwei Kang, and Lixin Xu

• Civil and Construction Engineering

- The Effect of Interlayer on the Structural Behavior of Timber Concrete Composite Utilizing Self-Compacting and Conventional Concretes.....103
F. Moshiri, R. Shrestha, and K. Crews
- Bond Characteristics of GFRP Sheet on Strengthened Concrete Beams due to Flexural Loading.....110
Rudy Djamaluddin, Mufti Amir Sultan, Rita Irmawati, and Hino Shinichi
- A Model-Based Approach to Measuring the Effect of Shading on Outdoor Thermal Comfort.....116
Edgar Eugenio Samano Baca and I. Tsung Tsai
- Detection of Cavities and Weak Zones underneath the Break Pressure Tanks at An-Nuwfaliyah, Libya.....122
Fathi A. Swaid and Khaled Elmahishi
- Ratio Determination of Solids and Voids for Traditional Malay Carvings: A Preparation for Environmental Performance.....126
Noor Hanita, Abdul Majid, and Zuraini Denan
- The City Hall of Mirandola Hardly Hit by the Earthquake of 2012: Damage Assessment and Approaches for the Seismic Improvement.....130
M. Bonariol, G. Boscato, A. Dal Cin, D. Fiorotto, and S. Russo
- Cost Efficiency in Precast Construction Method on Multi-Storey Buildings.....135
Dwi Dinariana and Dedy Wijaya
- Trend on the Absence of Private Open Space in Several Contiguous Housing in Sidoarjo, Indonesia.....139
Christina Eviutami Mediastika
- A Study of the Effect of Building Designs on Climate Change: Mitigation and Adaption.....145

Trend on the Absence of Private Open Space in Several Contiguous Housing in Sidoarjo, Indonesia

Christina Eviutami Mediastika

Abstract—Limited proportion of open space compared to building area on house-lots in housing district is suspected a trend in Indonesian housing. Several contiguous housing in Sidoarjo Regency, Indonesia, comprises of low-to-medium and medium-to-high class housing was studied to learn on the trend. It concluded that 100% respondents were significantly proven to have insufficient private open space toward 0%. The study proved that respondents possess sufficient awareness but limited knowledge on the necessity of private open space.

Index Terms—Awareness, house-lot, knowledge, open space.

I. INTRODUCTION

Demand on more and bigger room within house has triggered house-owner in many places in Indonesia to extend their house both horizontally and vertically. However, unprepared building sub-structure to bear additional upper structure of two-storey or more buildings leads to horizontal extension as a trend. Horizontal house extension on a limited house-lot has resulted insufficient open space (OS). This seems a trend in Indonesian house-lots. The trend was suspected caused by limited awareness and knowledge among house-owners on the necessity of green OS or simply OS around houses.

House with sufficient OS will gain many benefits, such as day-lighting and natural ventilation for most of its inner rooms. Moreover, when the OS is green, it will also provide absorption bed for rainwater harvesting which is constantly redundant during rainy season in Indonesia. House surrounded by walkable green OS would also benefit on senior citizen longevity [1]. House without sufficient OS has significant contribution to the presence of local puddle. When houses with insufficient OS are majority in a housing region, the puddles are likely become flood.

Issue and discussion on green OS or simply OS within private property is very limited. We mostly discuss on the necessity of public green OS and slightly disregard the benefits of private green OS or simply OS. A green OS on a private lot is never been bigger than that of public OS. But, multiple effects of this insignificant dimension will play a role on the availability of sufficient OS throughout urban region. That is, a research to study the main cause on the absence of private OS is reported here.

II. OBJECTIVE

The study was aimed to learn on how house extension toward zero OS was existed. In detail the study would see whether correlation among house extension, duration of occupancy, economic class or income, awareness and knowledge on the necessity of private OS are existed. The finding will be utilized to educate younger generation on the importance of OS through informal classes.

III. THEORETICAL APPROACH

Study by Lacy [2] has reported that clustered houses with protected OS were appreciated higher by market than those of single conventional housing with larger private yards. This case might not be similar to that of Indonesia. Indonesians seem more appreciate housing region with sufficient yards or public open spaces. Trend difference between Lacy's statement and the Indonesians is supported by Connel and Walls [3], who revealed that OS values are case study-specific. Particular OS area or set of areas is unique to a particular region and time period. However, as a general term, notions of beneficial effects of nearby green space have persisted throughout history, especially to improve people's health and well-being by providing restoration from stress and mental fatigue [4]. A research comparing residents with a view of urban greenery to residents without such view showed that those with view gain better well-being [5]. Moreover, a research has shown that views of nature can improve feelings of neighborhood safety and even lead to decreases in aggression and crime rates [6] and [7]. With these benefits, it is expected that house-owners are aware and possess knowledge on how OS shall be provided within house-lots. Awareness and knowledge is expected to be effective instrument to fix this trend.



Fig. 1. Contiguous housing of the research site.

Manuscript received February 21, 2014; revised May 17, 2014. This work was fully supported by Petra Christian University, Surabaya, Indonesia. C. E. Mediastika is with Department of Architecture Petra Christian University, Indonesia 60236 (e-mail: eviutami@petra.ac.id).



Fig. 2. Houses in Kemending Indah Residence with full-front roofing. The roofs extend into the street kerb side.

IV. METHODS

The study was conducted as quantitative field survey. Questionnaire was developed as an instrument to collect the data. Respondents were limited to house-owners of several contiguous housing in Sidoarjo, Indonesia. It was Wisma Beringin, Kemending Indah and Citra Harmoni (Fig. 1 and Fig. 2). The first two housing was plotted representing low-to-medium class housing, whilst the third was for medium-to-high class housing. The housings were selected based on the constant issue of the existence of local puddle during rainy season. Borderless-contiguous mixed of low-to-medium and medium-to-high class housings was also an issue to determine the research site. Richness of housing types will benefit the study to learn whether monetary factor exists toward decision on extending the house.

Likert's scale questionnaire is the most common method to study on people's judgment. Likert's scale is a widely used scaling to measure people's judgment on such issues. It usually ranges from "strongly disagree" to "strongly agree" on such issues. It is scored from 1 to 5 or 1 to 7 for more detail. One is scored for those who "strongly disagree" and 5 or 7 are for those who "strongly agree". However, in this study, the questionnaire could not be constructed using the common Likert's scale fully. As this study was not merely learning on people's judgment, but also on the causal effects of an action, the Likert's was modified to fit the expected data. The questionnaire was developed as close as possible to the Likert's scale.

There were dependent and independent variables appointed to construct the questionnaire (Table I). Dependent variable was extended house on the house-lots, whilst the independent variables were duration of occupancy, monthly income, and early and current awareness and knowledge on the necessity of green OS. These variables were generated within a set of questions. As respondents' knowledge background were vary and since the questionnaire was self-filled by respondents, the options of answer in the questionnaire were designed to offer ease in picking the answer. A comprehensive instruction on how to fill and pick answers was written prior to question lists. Self-filled method was selected upon time availability of the respondents. Most respondents spend their time working elsewhere and thus enumerators have very limited time to conduct interview. That is, self-filled method was considered more appropriate to gain as many as possible respondents. Checking for errors or bias answers were carried out during questionnaires

collection, so as to be directly confirmed to the associated respondent. Within the entire research site, there were approximately 250 house-lots. One hundred and seventy house-lots were suspected to have insufficient OS. One hundred questionnaires were distributed, and 83 were returned.

It is written on the questionnaire that the questionnaire should be completed by family-head to minimize error. In Indonesia, family-head usually husband/father or wife/mother. Prior to the main survey, pre-survey was conducted by distributing 5 questionnaires to house-owners other than the respondents to be included in the study. This was to gain feedback to improve the questionnaire prior to the main survey. From here, several unclear statements were revised for further ease. Prior to the main analysis, answers of each question were scored and tested for their validity using statistical correlation formula. The questionnaire was constructed sequentially. First was to gain personal data of respondents. This consists of respondent position in the family, age, monthly income, and duration of occupancy. Second was to gain data of housing-lots specification, which consists of housing-lots dimension, early house dimension, and current house dimension. Current housing-lot condition was not asked considering that expansion of housing-lot was very rarely to happen. Third was confirmation on whether house expansion was done by respondents or by previous occupants. Fourth was respondent's awareness and knowledge on the necessity of OS and the procedure to allocate OS on the house-lots.

Respondent's economical background was asked in term of respondents' monthly income, ranging from average of Indonesian lowest income up to the possible highest income on the site. Age and duration of occupancy were constructed as opened questions rather than closed questions, in order to gain valid and actual data. Question of house-lot and housing dimension were also asked as opened questions for similar reason. Answers collected were then to be stratified during analysis.

Whilst, respondent's awareness and knowledge were asked as closed question with option of answers was "was not aware" and "aware"; "do not possess knowledge" and "possess knowledge". It was scored 0 to 1 respectively. Those who possess knowledge should continue to the next opened question on how rainwater is channeled. Information on the questionnaire concepts and how variables appeared within questionnaire is elaborated in Table I. Terms of early and current was used to describe respondents' awareness and knowledge in the beginning of occupancy and current condition.

Since this was intentionally studied insufficient private OS on the house-lot, the questionnaire was distributed half randomly. In the low-to-medium class, from the entire 150 houses; 90 house-facades indicate that OS is insufficient. Fifty two of the "insufficient OS" were surveyed. In the medium-to-high class, questionnaires distribution was narrowed to housing block of small lots, as those with large lots appears to have large OS which does not fit the research scope. From the entire 100 small-lots houses, 80 house-facades indicate insufficient OS within lots. Thirty one of the "insufficient OS" were surveyed.

V. RESULT AND DISCUSSION

It was 100 questionnaires distributed proportionally among selected housings, and 83 were returned. The collected questionnaires were also in a good proportion between the low-to medium and the medium-to-high class housing. That is 52 of low-to-medium cost housing and 31 of medium-to-high class housing. The data extracted from

collected questionnaires was reviewed statistically and the result is presented in Table II. Data's validity was tested using correlation test, and was found that 2 questions were not valid and should not be used for further analysis. The reliability was tested using Cronbach's alpha and was resulted 0.43 which is considered quite reliable [8].

TABLE I: CONCEPT AND VARIABLE DETERMINATION

No.	Concept	Variables	Term	Option of answers	Scores
1	"OS" determinants (X)	Duration of occupancy (X_1)	n.a.	a. 0-5 years b. 5.1-10 years c. 10.1-15 years d. 15.1-20 years e. 20.1-25 years f. > 25.1 years	0 1 2 3 4 5
2		House extension (X_2)	n.a.	a. Extended with no remaining "OS" b. Extended with remaining "OS" c. No extension was made	0 1 2
3		Ratio of "OS" to house (X_3)	n.a.	a. < 40%* b. \geq 40%	0 1
4		Monthly income (X_4)	n.a.	a. < IDR 2 million b. IDR 2-5 million c. IDR 5.1-10 million d. IDR 10.1-15 million e. > IDR 15.1 million	0 1 2 3 4
5		Awareness (X_5)	Early	a. Was not aware b. Aware	0 1
6			Current	c. Was not aware a. Aware	0 1
7		Knowledge (X_6)	Early	a. Do not posses knowledge b. Posses Knowledge	0 1
8			Current	c. Do not posses knowledge a. Posses Knowledge	0 1

Note: * 40% was set as benchmark ratio due to widely used of ideal ratio of OS to building (including house) in Indonesia.

TABLE II: SUMMARY OF DATA STATISTICAL REVIEW

Statistical term	Duration of occupancy	House extension	Ratio of early OS to house	Ratio of current OS to house	Monthly Income	Early awareness	Current awareness	Early knowledge	Current knowledge
Mean	2.27	0.81	0.75	0.03	1.42	0.82	0.86	0.11	0.43
Standard Error	0.22	0.04	0.05	0.02	0.12	0.04	0.04	0.03	0.05
Median	2.00	1.00	1.00	0.00	1.00	1.00	1.00	0.00	0.00
Mode	0.00	1.00	1.00	0.00	1.00	1.00	1.00	0.00	0.00
Standard Deviation	1.98	0.40	0.44	0.15	1.06	0.39	0.35	0.31	0.50
Sample Variance	3.90	0.16	0.19	0.02	1.12	0.15	0.13	0.10	0.25
Kurtosis	-1.55	0.53	-0.68	38.73	-0.05	0.88	2.29	4.69	-1.97
Skewness	0.16	-1.59	-1.16	6.30	0.59	-1.69	-2.06	2.57	0.27
Range	5.00	1.00	1.00	1.00	4.00	1.00	1.00	1.00	1.00
Minimum	0.00	0.00	0.00	0.00	0.00	0.00	0.00	0.00	0.00
Maximum	5.00	1.00	1.00	1.00	4.00	1.00	1.00	1.00	1.00
Sum	188.00	67.00	62.00	2.23	118.00	68.00	71.00	9.00	36.00
Count	83.00	83.00	83.00	83.00	83.00	83.00	83.00	83.00	83.00
Largest(1)	5.00	1.00	1.00	1.00	4.00	1.00	1.00	1.00	1.00
Smallest(1)	0.00	0.00	0.00	0.00	0.00	0.00	0.00	0.00	0.00
Confidence Level (95%)	0.43	0.09	0.10	0.03	0.23	0.08	0.08	0.07	0.11
r data	0.85	0.60	0.58	-0.03	0.09	0.25	0.27	0.31	0.40
r table	0.22	0.22	0.22	0.22	0.22	0.22	0.22	0.22	0.22
Validity	valid	valid	valid	not valid	not valid	valid	valid	valid	valid
Reliability	0.43	0.43	0.43	0.43	0.43	0.43	0.43	0.43	0.43

By Table I and Table II, we may learn that average duration of occupancy is 2.27, which is duration of occupancy between 10.1 to 15 years. Discrepancy of duration of occupancy between low-to-medium cost housing and medium-to-high cost housing is presented in detail by Fig. 3. As the medium-to-high class housing was relatively newer in operation (15 years later), the houses were also inhabited later than those of the low-to-medium class housing.

By Table I and Table II we learn that monthly income variable should be disregarded for further analysis in association to other variables since it is not valid. However, by Fig. 4, we learn that what was suspected as to be low-to-medium and medium-to-high class housing was a correct term based on the factor of income.

By Table II, we learn that ratio of current OS to house is not valid in statistical term, this was suspected to be caused by the 0 score which was distributed evenly throughout the data. Fig. 5 describes that average and mode ratio of early OS to house was 0.75 and 1.00 (associated to Table I) which in fact was toward sufficient OS. However, both average and mode ratio of current OS to house were 0.03 and 0.00. This is made clearer by Fig. 6 that presents factual data of ratio of OS to house in percentage (%). During earlier occupancy, the average OS was 50%. This value sharply descended to average of 0% currently.

From awareness point of view, we learn that in average, respondents possess good score of awareness on the necessity of OS (Fig. 7). However from knowledge point of view, we learn on something slightly worse. Both early and current knowledge was of lower score than the awareness. The average of current knowledge ascends from the early knowledge, but the mode was constantly at 0 score (Fig. 8).

Relationship among duration of occupancy and other

variables may be studied using Table III. In general, we see that house extension occurred to those with longer occupancy period. From point of view of ratio of early OS compared to house area, we learn that those with shorter occupancy period possess lower ratio of OS. This may mean that duration of occupancy does not always correlate to insufficient OS. Whilst from point of view of ratio of current OS to house area, we see that insufficient OS is found in all period of occupancy. Early awareness and current awareness remain similar in all period of occupancy. From knowledge point of view, those with shortest period of occupancy (i.e. 0 – 5 years) do not possess early knowledge on the necessity of OS. During process of occupancy, respondents' knowledge seemed to be developed evenly both of those with shorter and longer period of occupancy. The highest score of knowledge is at those with 15.1 to 20 years duration of occupancy. We may strongly predict that the development of knowledge was affected by their experience to cope domestic issue, such as appearance of local puddle, necessity of air movement and natural lighting, etc.

By Fig. 9, we learn that some disparities existed between low-to-medium and medium-to-high class. In most issues, low-to-medium class possesses higher score than the medium-to-high class housing. However, the disparities is insignificant, with issue of early OS, early knowledge and current knowledge are exception. Fig. 9 reveals that medium-to-high class possesses significant lesser OS than low-to-medium class. The low-to-medium class also possesses significantly higher early and current knowledge. We may predict that economy background of respondents does not correlate to the absence of private OS. Respondents' knowledge also does not correlate to their economy background, but more to their duration of occupancy.

TABLE III: DURATION OF OCCUPANCY IN ASSOCIATION WITH OTHER VARIABLES

Duration of occupancy (years)	House extension	Ratio of early OS to house	Ratio of current OS to house	Early awareness	Current awareness	Early knowledge	Current knowledge
0-5	0.62	0.58	0.04	0.73	0.77	0.00	0.27
5.1-10	0.60	0.40	0.01	0.90	0.90	0.10	0.30
10.1-15	0.78	0.89	0.11	0.78	0.89	0.11	0.44
15.1-20	1.00	0.80	0.00	1.00	0.90	0.20	0.70
20.1-25	1.00	0.90	0.00	0.90	0.90	0.10	0.60
> 25.1	1.00	1.00	0.00	0.78	0.89	0.22	0.50

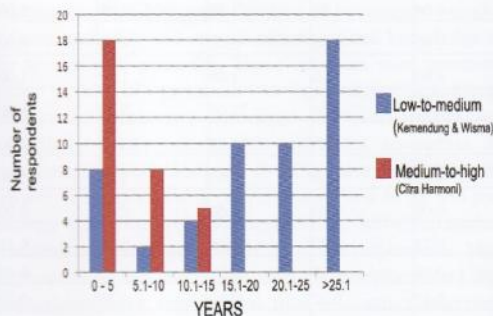


Fig. 3. Duration of occupancy between low-to-medium and medium-to-high class housing.

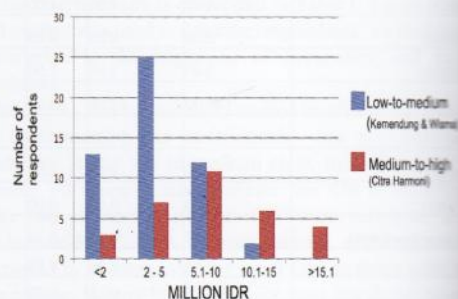


Fig. 4. Monthly income between low-to-medium and medium-to-high class housing.

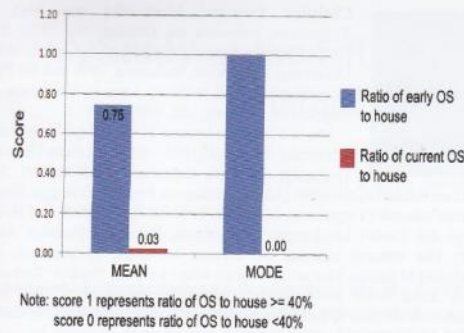


Fig. 5. Ratio of OS to house dimension of early and current condition.

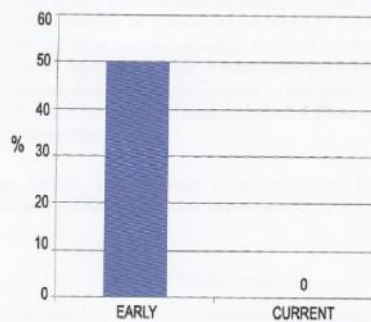


Fig. 6. Ratio of OS to house dimension of early and current condition in actual percentage.

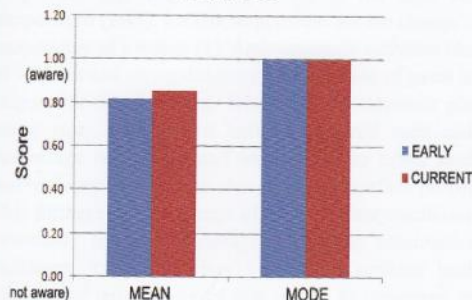


Fig. 7. Respondents' awareness of early and current condition.

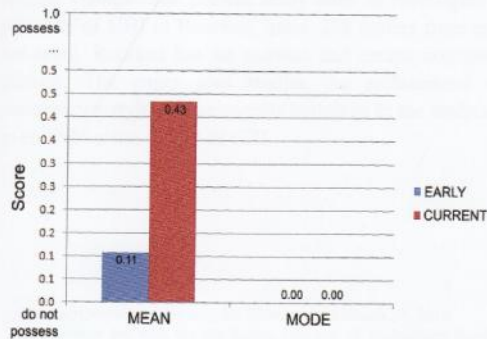


Fig. 8. Respondents' knowledge of early and current condition.

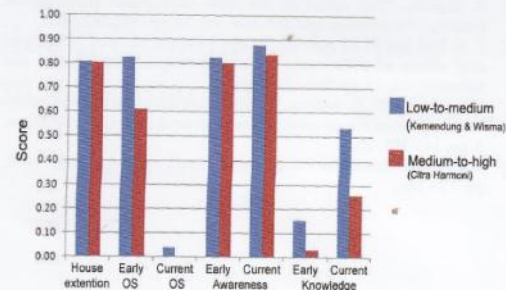


Fig. 9. Various disparities between low-to-medium and medium-to-high class housing.

VI. CONCLUSION

This study concluded that definition of low-to-medium and medium-to-high class housing was a correct term here, based only on respondents' monthly income. Disparities between the two were existed regarding issue of early OS, early knowledge, and current knowledge (Fig. 9). Eighty three respondents out of 170 (almost 50%) houses that were suspected to have insufficient OS were also proven here. This finding may lead to further terminology that housing expansion with the absence of private OS is a trend here. By this we may easily suspect that private green OS was also unavailable.

Interesting phenomenon was found that apart from good level of early and current awareness, average respondents possessed significantly lower knowledge. Their knowledge increased gradually throughout the period of occupancy. However, their current knowledge was still lower than their awareness. The finding of awareness possession is expected to be useful to plan further action of community outreach program to informally educate the community especially the younger generation, regarding trend on the absence of private OS and practical procedure to fixing this problem.

ACKNOWLEDGMENT

The Author would like to express deepest gratitude to Petra Christian University who provided full support to conduct this research and to Directorate General of Higher Education, Ministry of Education of Republic of Indonesia for making oral presentation of this paper possible.

REFERENCES

- [1] T. Takano, K. Nakamura, and M. Watanabe, "Urban residential environments and senior citizens' longevity in megacity areas: the importance of walkable green space," *J Epidemiology and Community Health*, vol. 56, pp. 913-918, 2003.
- [2] J. Lacy. (1990). An examination of market appreciation for clustered housing with permanent open space. University of Massachusetts-Amherst, Department of Landscape Architecture and Regional Planning Working Paper. [Online] Available: <http://www-unix.oit.umass.edu/~ruralma/LacyMarket.html>.
- [3] V. McConnell and M. Walls. (2005). The value of open space: Evidence from studies of non-market benefits. Research Report Resources for the Future Washington DC. [Online] Available: <http://www.rff.org>
- [4] P. Groenewegen *et al.*, "Vitamin G: effects of green space on health, well-being, and social safety," *BMC Public Health*, vol. 6, p. 149, 2006.

- [5] R. Kaplan, "The nature of the view from home: psychological benefits," *Environment and Behavior*, vol. 33, pp. 507-542, 2001.
- [6] F. E. Kuo and W. C. Sullivan, "Aggression and violence in the inner city: effects of environment via mental fatigue," *Environment and Behavior*, vol. 33, pp. 543-571, 2001.
- [7] F. E. Kuo and W. C. Sullivan, "Environment and crime in the inner city: Does vegetation reduce crime?" *Environment & Behavior*, vol. 33, no. 3, pp. 343-367, 2001.
- [8] T. C. Urdan, *Statistic in Plain English*, New York: Routhledge, 2010, pp. 178-180.



Christina Eviutami Mediastika was born in Yogyakarta Indonesia on October 19, 1971. She studied for diploma in architecture, in Gadjah Mada University, Yogyakarta, Indonesia, 1995 and for PhD in architecture and building science, University of Strathclyde, Glasgow, UK, 2000.

She is a full-time lecturer in Atma Jaya Yogyakarta University Indonesia (1995-2012) and Petra Christian University Surabaya Indonesia (2013-current). Her books are *Akustika Bangunan* (Jakarta, Indonesia, Penerbit Erlangga, 2005); *Material Akustik* (Yogyakarta, Indonesia, Penerbit Andi, 2009); and *Hemat Energi dan Lestari Lingkungan* (Yogyakarta, Indonesia, Penerbit Andi, 2013). Her research interests are acoustic buildings, environment, and sustainable buildings. Her article written with Floriberta Binarti "Reducing indoor noise levels using people's perception on greenery" has been published in *Journal of Environmental and Climate Technology*, volume 1 number 11, 2013.