

IOP Conference Series: Earth and Environmental Science



The open access *IOP Conference Series: Earth and Environmental Science (EES)* provides a fast, versatile and cost-effective proceedings publication service.

[RSS](#)[Sign up for new issue notifications](#)

Chrome File Edit View History Bookmarks People Tab Window Help 93% Thu Mar 3 5:03 PM

WhatsApp IOP Conference Series: Earth IOP Conference Series: Earth cover IOP volume 907 - Google IOP Conference Series: Earth

lopscience.iop.org/issue/1755-1315/907/1 Journals Books Publishing Support Login

IOP Conference Series: Earth and Environmental Science

Table of contents

Volume 907
2021
[Previous issue](#) [Next issue](#)

Digital and Empathic Engagement in the New Era for Architecture and Civil Engineering 20-21 August 2021, Surabaya, Indonesia
 Accepted papers received: 28 October 2021
 Published online: 12 November 2021

[Open all abstracts](#)

JOURNAL LINKS

- [Journal home](#)
- [Journal scope](#)
- [Information for organizers](#)
- [Information for authors](#)
- [Contact us](#)
- [Reprint services from Curran Associates](#)

Preface

| | |
|--|--------|
| OPEN ACCESS | 011001 |
| Preface | |
| + Open abstract View article PDF | |
| <hr/> | |
| OPEN ACCESS | 011002 |
| Peer review declaration | |
| + Open abstract View article PDF | |
| <hr/> | |

Structural Engineering and Materials

| | |
|--|--------|
| OPEN ACCESS | 012001 |
| A comparative study of several bio-inspired algorithms in cost optimization of cellular beams | |
| A Tjahjono, E J Wijayanti, D Prayogo and F T Wong | |
| + Open abstract View article PDF | |
| <hr/> | |
| OPEN ACCESS | 012002 |
| The study of shear wall uses in buildings during the architecture design process | |
| Livian Teddy, Husnul Hidayat and Dessa Andriyali A | |
| + Open abstract View article PDF | |
| <hr/> | |
| OPEN ACCESS | 012003 |
| Modified Partial Capacity Design (M-PCD): achieving partial sidesway mechanism by using two steps design approach | |
| L S Tanaya, H Herryanto and P Pudjisuryadi | |
| + Open abstract View article PDF | |
| <hr/> | |
| OPEN ACCESS | 012004 |
| Comparison reinforcement design shear wall modelling planar and assembly in elevator shaft | |
| Daud Rahmat Wiyono, Roi Milyardi, Yosafat Aji Pranata and Anang Kristianto | |
| + Open abstract View article PDF | |
| <hr/> | |
| OPEN ACCESS | 012005 |
| A comparative study of several nature-inspired algorithms in steel deck floor system cost optimization | |
| T Emanuel, Hadrian, D Prayogo and F T Wong | |
| + Open abstract View article PDF | |
| <hr/> | |
| OPEN ACCESS | 012006 |
| Review of autonomous self-healing cementitious material | |
| S A Susanto, D Hardjito and A Antoni | |
| + Open abstract View article PDF | |

OPEN ACCESS 012007
Alternative approach in Partial Capacity Design (PCD) by using predicted post-elastic story shear distribution
H Herryanto, L S Tanaya and P Pudjisyryadi
[+ Open abstract](#) [View article](#) [PDF](#)

OPEN ACCESS 012008
The effect of crumb rubber in dense graded and open graded cold mixture asphalt
P S Wulandari and D Tjandra
[+ Open abstract](#) [View article](#) [PDF](#)

OPEN ACCESS 012009
Modeling and analysis of 3D-printed reinforced and prestressed concrete beams
J Chandra, H Wibowo, D Wijaya, F O Purnomo, P Pudjisyryadi and A Antoni
[+ Open abstract](#) [View article](#) [PDF](#)

OPEN ACCESS 012010
Optimization of concentrically braced steel frame structures based on SNI 1726:2019, SNI 1727:2020, SNI 1729:2020, and AISC 341-16
J Aloysius, J A Sumito, D Prayogo and H Santoso
[+ Open abstract](#) [View article](#) [PDF](#)

OPEN ACCESS 012011
Investigation of the material mixtures and fiber addition for 3D concrete printing
A Antoni, A Agraputra, D Teopilus, A H Sunaryo, M M Mulyadi, P Pudjisyryadi, J Chandra and D Hardjito
[+ Open abstract](#) [View article](#) [PDF](#)

Building Science and Technology

OPEN ACCESS 012012
Designing louvers toward optimum daylight performance in Indonesia: a parametric study
R P Khidmat, H Fukuda, Kustiani and A P Wibowo
[+ Open abstract](#) [View article](#) [PDF](#)

OPEN ACCESS 012013
The importance of iterative process in facade design optimization for a green office building in South Tangerang City
Dian Fitria
[+ Open abstract](#) [View article](#) [PDF](#)

OPEN ACCESS 012014
Comparison of *Shibataea kumasasa* and *Equisetum hyemale* as vertical greenery system for thermal and light shade in student's architectural design studio in Surabaya
L Kristanto, W W Canadarma and E S Wijaya

OPEN ACCESS 012015
Experimental study on ventilation using earth-to-air heat exchanger in Surabaya
A Juniwati, D S Mitorogo, A E Abednego, S Kurnia and E A Handoyo
[+ Open abstract](#) [View article](#) [PDF](#)

OPEN ACCESS 012016
Comparison of simulation-based methods and metaheuristic optimization algorithms for optimizing window design by considering daylighting and heat transfer in a tropical region of Indonesia
A Budhiyanto, A Oktavianus, B Tedjokusumo, K Harsono and I T Yang
[+ Open abstract](#) [View article](#) [PDF](#)

OPEN ACCESS 012017
The uniformity concept of urban design: impact of cultural traditions on the meaning of Balinese town
E D Mahira, B Soemardiono and E B Santoso
[+ Open abstract](#) [View article](#) [PDF](#)

OPEN ACCESS 012018
Reinterpreting local wisdom of *Rumah Kaki Seribu* as sustainable architecture
B C Prabaswara, L Hariyanto and L S Arifin
[+ Open abstract](#) [View article](#) [PDF](#)

PAPER • OPEN ACCESS

Experimental study on ventilation using earth-to-air heat exchanger in Surabaya

To cite this article: A Juniwati *et al* 2021 *IOP Conf. Ser.: Earth Environ. Sci.* **907** 012015

View the [article online](#) for updates and enhancements.

You may also like

- [The Evolution of the Interstellar Medium in Post-starburst Galaxies](#)
Zhihui Li, K. Decker French, Ann I. Zabludoff et al.
- [Forced and natural ventilation of a room with a combined solar chimney and Earth-to-Air Heat Exchanger system](#)
V T Nguyen and Y Q Nguyen
- [Quantum anomalous Hall effect in time-reversal-symmetry breaking topological insulators](#)
Cui-Zu Chang and Mingda Li



The Electrochemical Society
Advancing solid state & electrochemical science & technology

242nd ECS Meeting

Oct 9 – 13, 2022 • Atlanta, GA, US

Abstract submission deadline: **April 8, 2022**

Connect. Engage. Champion. Empower. Accelerate.

MOVE SCIENCE FORWARD



Submit your abstract



Experimental study on ventilation using earth-to-air heat exchanger in Surabaya

A Juniwati^{1,3}, D S Minto¹, A E Abednego¹, S Kurnia¹ and E A Handoyo²

¹ Architectural Department, Petra Christian University, Surabaya 60263, Indonesia.

² Mechanical Department, Petra Christian University, Surabaya 60263, Indonesia.

³ Corresponding author: ajs@petra.ac.id

Abstract. The main problem related to thermal condition in Surabaya as a second-largest city in Indonesia is humid and hot. It is a typical condition of tropical climate. Ventilation in the hot day will bring warm and humid outdoor air into a room. It will increase the temperature of air in the room. One of some efforts to reduce the outdoor air temperature is using an earth to air heat exchanger (EAHE) to transfer heat from the air to the earth or ground. This paper will discuss about research done to study the effect of EAHE to a room temperature. The study used two model rooms which are similar and a model EAHE. One room called condition room will receive air flowing from the EAHE pipe and the other room is called the referent room. From the research, it is found that the air in condition room with EAHE is cooler in the daytime compared to the referent room. The temperature of the condition room with EAHE is more stable.

1. Introduction

Surabaya is the second-largest city in Indonesia which is in a humid and hot tropical area. The average temperature of Surabaya was 27.4°C throughout the year according to web Climatic-data.org [1]. The coolest month is February which climate conditions are 26.6°C and 84% for air temperature and humidity, respectively. The warmest happens on October which data are 28.4°C and 81% for air temperature and humidity, respectively. Those climate conditions are plotted on Olgyay–bioclimatic chart. Zsokolay [2] convert it to metric system, designed to meet the comfort zone in a warm climate. To obtain the comfortable thermal conditions, certain air flow is required. The conditions become more severe in Surabaya urban areas. More dense areas are covered with hard surface and lack of open space to generate air movement and cause the phenomenon of urban heat island. Jatayu and Cahyono [3] found that urban heat island condition in East Surabaya caused the air temperature in there rise 1-1.4% in the period 2011-2016.

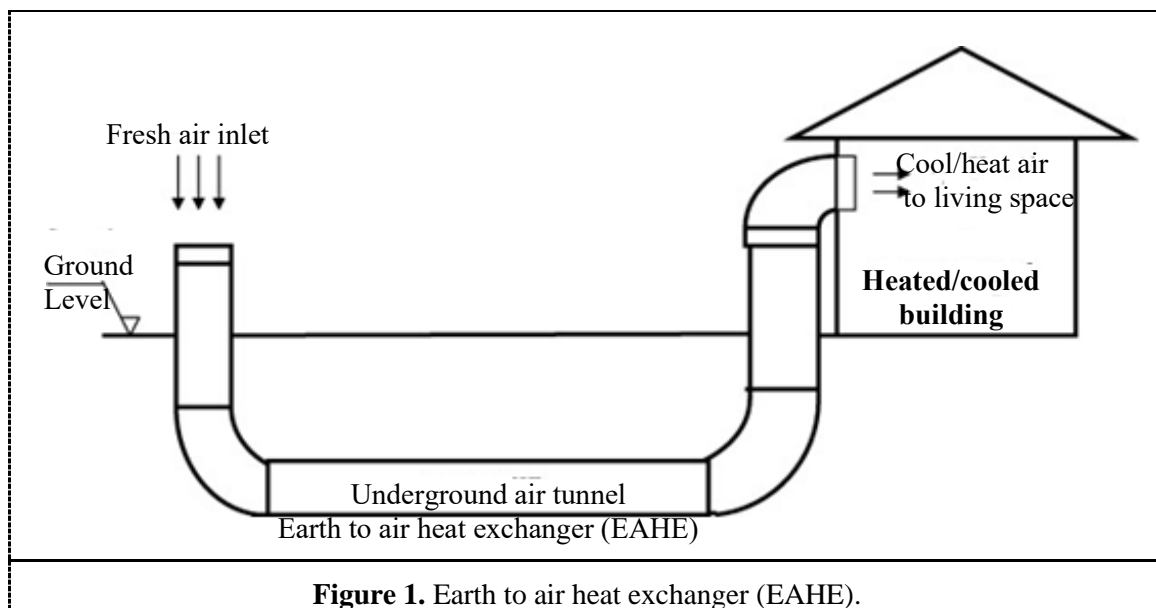
In these conditions, many people who live in Surabaya use fans to circulate air in their active spaces. If the outdoor air that is warm is drawn into the room, then the room will get warm instead of cooled. Kusuma [4] said that the mean radiant temperature is the most influential factor in air temperature. Other factors are the relative humidity of air, the air velocity, human's activity, and the clothing. Those factors determine the thermal environment that will affect our productivity and our health. The thermal environment closely relates to our body thermoregulatory mechanisms and circulation system. According to Zsokolay [2], the dry-bulb temperature and speed of air flowing will affect the mean radiant temperature. This research focused to the dry-bulb air temperature or called



room temperature only. The room temperature can be conditioned in many ways including by transferring heat from the outdoor air to the earth or ground in a heat exchanger called EAHE before entering the room. This research wants to study the effect of supplying air from the EAHE to the room temperature.

2. Theory and related studied

An earth to air heat exchanger (EAHE) is the exchange of heat between the air in the pipes buried within the earth or ground. The energy performance of an EAHE system can be influenced by three primary factors: the EAHE pipe material, the circulating fan, and the ground characteristics and its moisture content, according to Ozgener [5]. In general earth cooling ventilation can be illustrated in Figure 1.



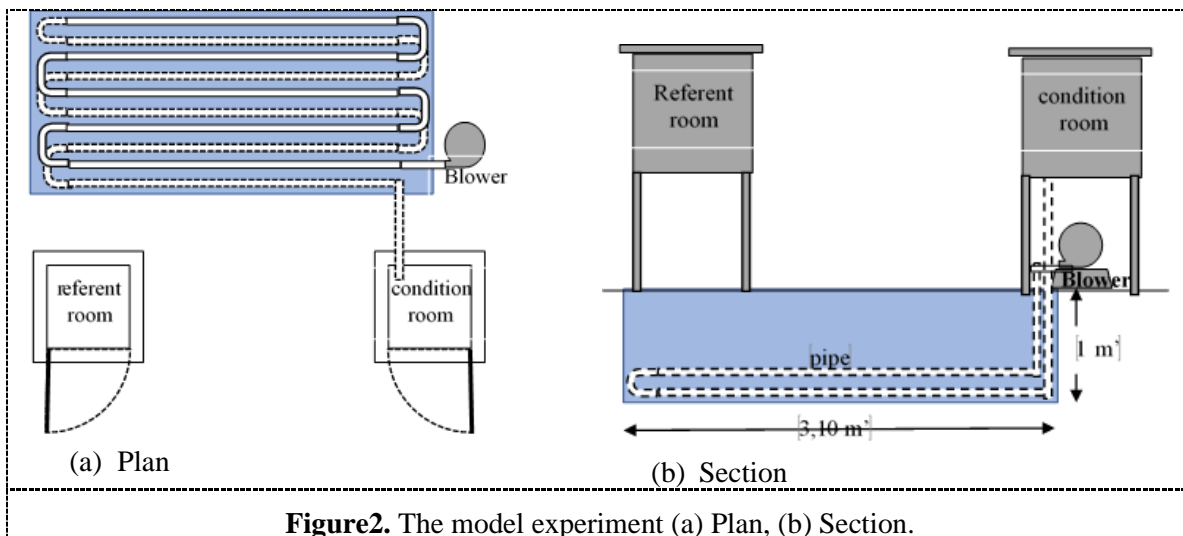
Suparwoko [6] studied the use of earth cooling tubes with and without stone on the ground surfaces at PT. Archi Link Consultant in Sleman, Yogyakarta. When stones cover the ground surface, the outside-air temperature will decrease from 33–35°C to 30–31°C at the outlet of earth cooling tubes. But, when no stones use on the ground surface, the outside-air temperature will decrease from 30–35°C to 29°C. Unfortunately, Suparwoko did not inform the depth, the length, and the diameter of the pipe used in his research. However, from this research, it is known that earth cooling tube can reduce the temperature of the outdoor air (ambient air). Meanwhile, Robert [7] found that the earth tubes can be installed at a minimum of 100 feet planted a few feet below the ground surface. This method can be used to condition the air naturally.

In this study, the soil temperature has been determined from investigation in Jamshedpur, India by Singh [8]. That is employing finite numerical method which is validated against experimental value. Diurnal variation of soil temperature is found up to depth of 0.4m, whereas annual variation is up to 4 m of depth.

3. Methodology

This research used a model of EAHE made of steel pipes. The location of the research is at the northeast corner of Q – campus area of Petra Christian University. It is an open area covered where the ground is covered by paving stones and grasses. The type of the soil in the location is an alluvial soil mix with sand and gravel. The ground water could be found in some shallow depth, such as 100 cm. The model of EAHE used in experiment is shown on Figure 2. The fresh – outdoor air is drawn into

the pipe by a blower. The pipe used is black steel pipe with diameter is 2 inches and total length is 36 meters. The EAHE pipe in the ground is arranged in ten passes. To save the space, the pipe will have five passes in a certain depth (100 cm) and five passes more in different depth (80 cm) and the length of the pipes is 16.3 m. Inlet pipe length is 115 cm, where 80 cm is buried in vertical position as shown in Fig. 2 (a). Outlet pipe is 215 cm, where 100 cm is buried in vertical position, as well. To prevent heat transfer, the pipes connect with ambient will be insulated with bubble aluminum foil. Both rooms have the same dimension and volume of 1 m^3 each. All six sides of the room are covered with Styrofoam. There are two boxes. The first box is called condition room with EAHE air supply, and the other one is called referent room as shown in Fig. 2 (b). To minimize the effect of ground temperature to the room temperature, both boxes are raised 1 meter higher than the ground.



The photos of the blower, the EAHE, the condition room and the referent room are shown in Figure 3, Figure 4, and Figure 5 below.



Figure 3. The blower, that blows fresh air into pipe.



Figure 4. The bottom pipe is at 100 cm depth.



Figure 5. Two box rooms are condition room and referent room.

There are six data loggers used to record data from thermocouple used to measure the air and ground temperature. The instruments used are the Onset – HD HOBO TMC Air/Water/Soil Temp Sensors which is for use with HOBO U-Series, UX120-006M external-channel data loggers. Three of them are used with probe sensors to measure the ground temperatures, air temperatures at the inlet and outlet pipe. And the other three data loggers are used to measure the outdoor air temperature, the referent room air temperature, and the condition room air temperature.

The experiment conducted in dry season with two environments. First, the ground surface was exposed to the Sun and ambient air directly. Second, the ground surface was shaded from the Sun using a tent above the ground where EAHE buried. The field-measurements for both environments were measured from July 17 to July 24, 2021. The field-experiment was conducted outdoor. Thus, it

depends on the weather condition. From the three-day data obtained, the ambient air temperatures data of all systems are shown at Fig. 6 and Fig. 7.

4. Result and discussion

The results of measurements in two environments which are (1) exposed to the Sun and (2) shaded with a tent can be found in Table 1. Data given in the table are the average of three-day measurements of air temperature in referent room, condition room, outlet pipe, inlet pipe, temperature of outdoor air, and temperature of the ground where EAHE is buried.

Table 1. Hourly average temperature of outdoor air, referent room air, condition room air, outlet pipe air, inlet pipe air and soil of Exposed Ground Surface and Shaded Ground Surface.

| Times | EXPOSED GROUND SURFACE | | | | | | SHADED GROUND SURFACE | | | | | |
|----------|------------------------|---------------------|----------------------|-----------------------|----------------------|------------|-----------------------|---------------------|----------------------|-----------------------|----------------------|------------|
| | Out door air temp. | Ref. room air temp. | cond. room air temp. | outlet pipe air temp. | inlet pipe air temp. | soil temp. | Out door air temp. | ref. room air temp. | cond. room air temp. | outlet pipe air temp. | inlet pipe air temp. | soil temp. |
| 06:00 AM | 27.17 | 25.11 | 31.19 | 36.13 | 35.32 | 33.65 | 26.81 | 24.72 | 30.00 | 34.06 | 34.51 | 31.71 |
| 07:00 AM | 27.25 | 25.22 | 31.33 | 36.11 | 35.69 | 33.65 | 27.00 | 25.19 | 30.29 | 34.06 | 34.85 | 31.73 |
| 08:00 AM | 27.99 | 26.57 | 32.01 | 36.09 | 36.41 | 33.64 | 27.81 | 26.81 | 31.04 | 34.07 | 35.90 | 31.75 |
| 09:00 AM | 29.12 | 28.49 | 32.81 | 36.09 | 37.51 | 33.63 | 28.92 | 28.97 | 31.90 | 34.08 | 36.80 | 31.76 |
| 10:00 AM | 30.39 | 30.89 | 33.61 | 36.08 | 38.42 | 33.61 | 29.95 | 31.08 | 32.62 | 34.12 | 37.59 | 31.77 |
| 11:00 AM | 31.83 | 35.22 | 34.92 | 36.09 | 39.47 | 33.59 | 31.14 | 35.33 | 33.68 | 34.15 | 38.47 | 31.78 |
| 12:00 AM | 33.52 | 37.29 | 36.73 | 36.12 | 40.48 | 33.58 | 32.41 | 38.65 | 35.89 | 34.20 | 39.17 | 31.80 |
| 01:00 PM | 34.68 | 38.83 | 37.72 | 36.16 | 41.28 | 33.57 | 33.62 | 40.34 | 36.94 | 34.27 | 39.86 | 31.81 |
| 02:00 PM | 35.60 | 40.66 | 38.71 | 36.22 | 41.62 | 33.56 | 34.56 | 41.11 | 37.55 | 34.35 | 40.34 | 31.82 |
| 03:00 PM | 35.94 | 40.46 | 38.28 | 35.93 | 41.39 | 33.76 | 34.48 | 40.28 | 36.79 | 33.53 | 39.62 | 31.50 |
| 04:00 PM | 35.35 | 38.61 | 37.06 | 36.01 | 40.76 | 33.74 | 33.87 | 38.56 | 35.63 | 33.64 | 38.96 | 31.51 |
| 05:00 PM | 33.93 | 35.27 | 35.28 | 36.08 | 39.64 | 33.74 | 32.87 | 35.21 | 33.90 | 33.72 | 38.10 | 31.53 |
| 06:00 PM | 32.73 | 31.92 | 33.94 | 36.13 | 38.83 | 33.74 | 31.69 | 31.40 | 32.41 | 33.79 | 37.22 | 31.54 |
| 07:00 PM | 32.01 | 30.19 | 33.42 | 36.16 | 38.41 | 33.71 | 30.94 | 29.56 | 31.86 | 33.85 | 36.89 | 31.55 |
| 08:00 PM | 31.30 | 29.30 | 33.13 | 36.18 | 38.04 | 33.72 | 30.24 | 28.78 | 31.62 | 33.88 | 36.58 | 31.57 |
| 09:00 PM | 30.76 | 28.63 | 32.90 | 36.20 | 37.65 | 33.72 | 29.79 | 28.39 | 31.49 | 33.93 | 36.41 | 31.60 |
| 10:00 PM | 30.18 | 28.10 | 32.63 | 36.20 | 37.37 | 33.70 | 29.47 | 27.99 | 31.37 | 33.94 | 36.21 | 31.60 |
| 11:00 PM | 29.72 | 27.74 | 32.47 | 36.20 | 37.06 | 33.70 | 29.13 | 27.61 | 31.20 | 33.98 | 36.03 | 31.62 |
| 12:00 PM | 29.38 | 27.19 | 32.27 | 36.20 | 36.65 | 33.69 | 28.70 | 27.07 | 30.94 | 34.00 | 35.66 | 31.63 |
| 01:00 AM | 28.98 | 26.48 | 31.98 | 36.18 | 36.39 | 33.67 | 28.18 | 26.40 | 30.59 | 34.01 | 35.28 | 31.65 |
| 02:00 AM | 28.45 | 26.38 | 31.86 | 36.17 | 36.20 | 33.66 | 27.84 | 26.00 | 30.49 | 34.03 | 35.15 | 31.66 |
| 03:00 AM | 27.94 | 26.19 | 31.61 | 36.17 | 35.92 | 33.67 | 27.56 | 25.84 | 30.42 | 34.04 | 34.91 | 31.68 |
| 04:00 AM | 27.75 | 25.67 | 31.48 | 36.16 | 35.82 | 33.66 | 27.32 | 25.49 | 30.24 | 34.05 | 34.70 | 31.69 |
| 05:00 AM | 27.42 | 25.43 | 31.29 | 36.14 | 35.62 | 33.66 | 27.04 | 25.00 | 30.11 | 34.05 | 34.53 | 31.71 |

Based on these data, two graphs of hourly temperature in three days are shown in Fig. 6 and Fig. 7. Figure 6 is for the exposed ground environment and Fig. 7 is for the shaded one. In Fig. 6 and Fig. 7, the temperature of air in referent and condition room is higher than outdoor air, because there is heat transfer from the roof and walls that absorb solar radiation in the daytime. The roof and walls are exposed to the Sun and receive heat gain from it. Then, this heat gain is transferred to the air by convection all the time, not only in daytime.

The air temperature at the inlet pipe is higher than outdoor temperature because the sensor is located after the blower. A blower will increase the temperature of discharged air as it uses energy to compress the air. But the outdoor air temperature still affects the air temperature at inlet. The air temperature at inlet fluctuates following the outdoor air temperature. The ground or soil temperature is almost constant compared to the outdoor air. When the temperature of inlet air is much higher than the soil, the air will release more heat to the soil as it passes the EAHE. Thus, the air temperature will be lower at the outlet than at the inlet. The outlet air temperature flowing out of EAHE is almost constant following the earth or soil temperature. The air flowing from the outlet of EAHE enters the condition room. Since the temperature of this incoming air is constant, the condition room temperature is almost

stable, as well, compared to the referent room which has no EAHE air supply. However, the condition room temperature is lower than the incoming air temperature because the flowrate of the incoming air is small and there is outdoor air that infiltrates from small aperture in the walls or roof. The condition room is warmer in the night and cooler in daytime around noon.

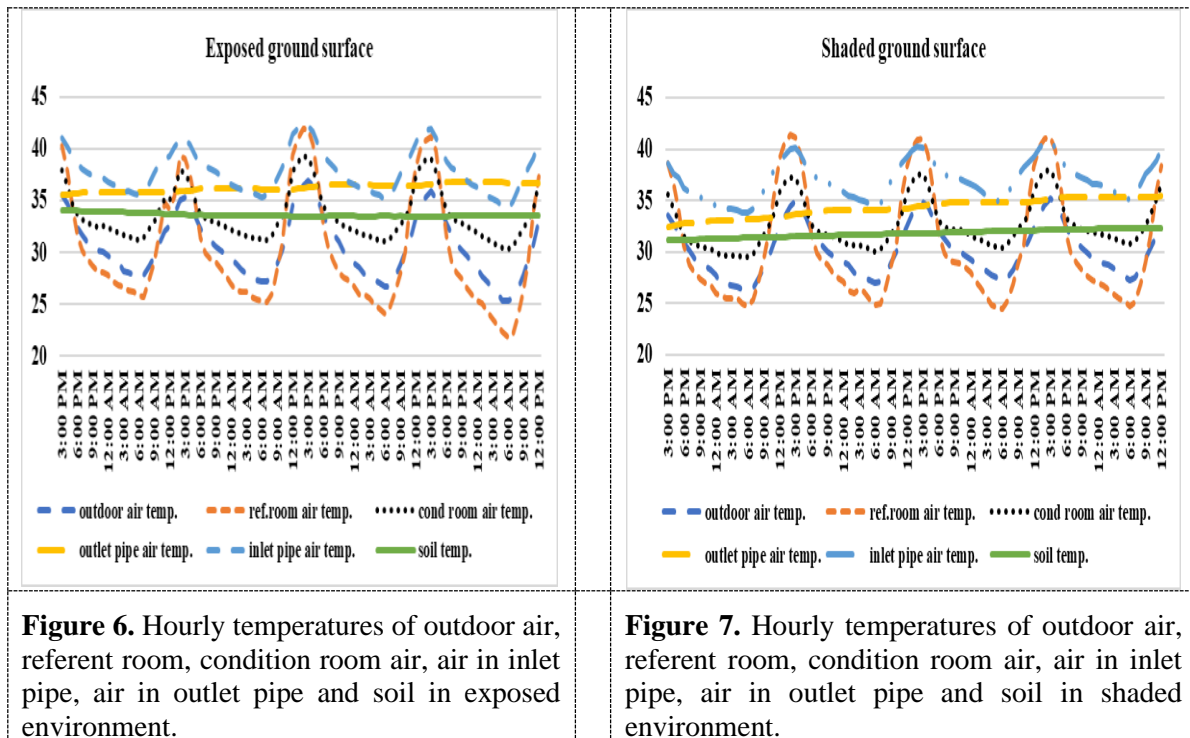


Figure 6. Hourly temperatures of outdoor air, referent room, condition room air, air in inlet pipe, air in outlet pipe and soil in exposed environment.

Figure 7. Hourly temperatures of outdoor air, referent room, condition room air, air in inlet pipe, air in outlet pipe and soil in shaded environment.

The result of using EAHE when the ground is exposed directly to the Sun is shown in Fig. 6. The lowest temperature occurred at 06.00 AM. The three-day average air temperature in condition room is 31.19°C. It is 4.02°C warmer than the outdoor air and 6.08°C warmer than the referent room. While the highest temperature occurred at 03.00 PM. The three-day average air temperature in condition room is 38.65°C. It is 2.1°C cooler than the referent room and 2.57°C warmer than the outdoor air. The condition room gets cooler than the referent room from 11:00 AM to 04:00 PM. Without EAHE, the referent room temperature reached 40.75°C and it was 2.1°C warmer than the condition room.

The result of using EAHE when the ground is not exposed but given shading over it is shown in Fig. 7. The lowest and highest temperature occurred at the same time, i.e., 06.00 AM and 03.00 PM, respectively. The lowest of average air temperature in condition room is 30.00°C. It is 3.19°C warmer than the outdoor air and 5.28°C warmer than the referent room. While the highest of average air temperature in condition room is 37.60°C. It is 2.60°C warmer than the outdoor air and 3.49°C cooler than the referent room. As in exposed ground, using EAHE in a shaded ground makes the condition room cooler compared to referent room, longer from 11:00 AM to 05:00 PM.

From Fig. 6 and Fig. 7, the soil temperature and the air temperature at the outlet pipe are cooler when there is shading over the ground. The soil temperature is 1.71°C cooler in shaded ground than exposed ground and the outlet air temperature is 1.85°C cooler. EAHE used in the shaded ground makes the condition room cooler than the exposed ground. At 03.00 PM, the warmest condition, the room condition is 1.36°C cooler when the ground is shaded and using EAHE.

The soil temperature is quite high all the time whatever the outdoor air temperature, i.e., 33.6°C and 32.0°C when the ground is exposed and shaded, respectively. The soil temperature does not change and seems not effected even though there is no solar radiation. So, it needs more observation to find this strange behavior.

The condition room temperature depends on temperature of outdoor air and incoming air from EAHE (or called the outlet air). But the referent room temperature depends on outdoor air temperature only. The referent room line in Fig. 6 and Fig. 7 is following the outdoor line and has higher deviation compared to the condition room line. Thus, EAHE is useful to reduce the room temperature whenever the day is hot and EAHE is better used with a shading over the ground.

5. Conclusion and recommendation

From the experiments, it is found that the use of EAHE with a blower as an air cooling ventilation system all day long is not effective when the soil temperature is high. The outlet air from EAHE is always higher than the outdoor air. But at noon, the condition room with EAHE air supply is cooler than the referent room without EAHE air supply. Thus, ventilation using EAHE air supply is suitable when the day is hot or around noon. In the evening and morning, it is better to use cross ventilation with outdoor air. Adding a shading over the ground where EAHE is installed is useful for air cooling ventilation systems.

Another benefit of using EAHE to supply air to the room is to stabilize the room temperature. The room with EAHE air supply is not too hot at noon, and not too cold during the night. This finding suggests that EAHE is suitable to be used in any location with high diurnal air temperature, such as in highland area.

Acknowledgment

We would like to thank Petra Christian University Research and Community Service Institution for financial support of this research. And the other, we would like to thank the Vice Rector for Administration and Finance Petra Christian University and Head of Campus Services and Maintenance Unit of Petra Christian University.

References

- [1] Climate-data.org <https://en.climate-data.org/asia/indonesia/east-java/surabaya-977158/#climate-table>
- [2] Szokolay S V 2004 Introduction to Architectural Science: the basic sustainable design, *British Library Cataloguing in Publication Data*
- [3] Jatayu A and Cahyono S 2017 Analisis perubahan temperatur permukaan wilayah Surabaya Timur tahun 2001-2016 menggunakan Citra LANDSAT *JURNAL TEKNIK ITS Vol. 6, No. 2 (2017), 2337-3520 (2301-928X Print)*
- [4] Kusuma, Komang Edy Indrawan 2015 Status thermal comfort pada lingkungan atmosfer permukiman di wilayah kecamatan denpasar barat *J. Ecotrophic. echotropi*
- [5] Ozgener L 2011 A review on the experimental and analytical analysis of earth to air heat exchanger (EAHE) systems in Turkey *Renewable and Sustainable Energy Reviews 15 (2011) 4483–4490*
- [6] Suparwoko W 2018 Room temperatures comparison based on earth cooling tube with and without stone exposure: office building case study in Yogyakarta, Indonesia, *International Journal of Civil Engineering and Technology (IJCIET) Vol 9, Issue 13*
- [7] Roberts T 2017 Earth tubes: a natural way to air condition your home, <https://www.permaculturenews.org/2017/07/10/earth-tubes-natural-way-air-condition-home/>
- [8] Singh Raviranjana Kumar and Ram Vinoy Sharma 2017 Numerical analysis for ground temperature variation *Geotherm Energy (2017) 5 22*. DOI 10.1186/s40517-017-0082-z