

# Briquette Combustion Characteristics of Cerbera manghas Leaves with Rejected Pineapple as Binding Agent as a Sustainable Fuel

*by Willyanto Anggono*

---

**Submission date:** 25-Apr-2024 02:31PM (UTC+0700)

**Submission ID:** 2361277882

**File name:** SD7011--formatted-revised.pdf (452.3K)

**Word count:** 2839

**Character count:** 15004

# Briquette Combustion Characteristics of *Cerbera manghas* Leaves with Rejected Pineapple as Binding Agent as a Sustainable Fuel

Willyanto Anggono<sup>1,2</sup>, Resmana Lim<sup>1,3</sup>, Teng Sutrisno<sup>1,2</sup>, Ivan Christian Hernando<sup>1,2</sup>  
and Alexander Billy Christensen<sup>1,2</sup>

<sup>1</sup> Centre for Sustainable Energy Studies, Petra Christian University, Surabaya, Indonesia

<sup>2</sup> Mechanical Engineering Department, Petra Christian University, Surabaya, Indonesia

<sup>3</sup> Electrical Engineering Department, Petra Christian University, Surabaya, Indonesia  
willy@petra.ac.id

**Abstract.** Litter from fallen leaves of the *Cerbera manghas* plant is commonly found throughout Indonesia. Various studies have shown that briquettes formed from the falling leaves of *Cerbera manghas* may be able to reduce waste and be used as a new energy source. However, previous studies employed tapioca as a binding agent for briquettes, which is an edible starch, and their use as a binder competes with the availability of food resources. Alternatively, rejected pineapple would be used as a binding agent to remedy the problem since it is not edible and reduces unused waste. The briquette was subsequently researched to determine the optimal production parameters as well as its potential as a sustainable fuel. The 95% to 5 % ratio of biomass to briquette is used to achieve a high calorific value of 4338.79 kcal/kg while maintaining the structure of the briquette in check. The usage of this briquette is supported by both the calorific value test and ultimate analyses. According to the research on the four combustion characteristics (ignition time, burning temperature, combustion rate, and burning time), the composition that gives the best briquette is obtained by using a particle size of 60 mesh and compressed by the hydraulic pressure of 2 MPa.

**Keywords:** Biomass, Briquette, Inedible, *Cerbera manghas*, Pineapple waste.

## 1 Introduction

The world's energy demand has continuously increased year by year, and with it, the supply of fossil fuels will only keep diminishing more each year [1]. Fossil fuels are also non-renewable and not environmentally friendly [2]. Therefore, another form of energy must be introduced in order to keep up with the ever-increasing energy demand, one of them being renewable energy from biomass. Not only does biomass energy have the potential to replace fossil fuels, but it is also more environmentally friendly than fossil fuels as it has the potential to be carbon neutral [3]. Furthermore, it is available from a wide range of sources such as animal waste and civil waste [4]. One of the ways to utilize these biomasses as a source of energy is through direct combustion [5].

However, burning these biomasses directly without processing them is not advisable as they have a lot of moisture content which hinders combustion performance. Furthermore, due to their low bulk density, it is hard and expensive to transport [6]. All of these shortcomings can be overcome by processing them into briquettes as they have lower moisture content and higher bulk density, hence making them easier to transport while also having better combustion properties [7–9]. Furthermore, there is a net positive gain of energy from converting biomass to briquettes. Briquettes are also socially beneficial as they enable people living in rural areas to get additional income and are a great energy source [4]. Nevertheless, since there is a wide range of biomass selections originating from plant or fruit wastes [10] with differing properties, each of these biomasses must be studied separately to determine its performance as a briquette [11].

A certain study in Indonesia has determined the possibility of forming briquettes from *Cerbera manghas* leaves [12]. The leaves of the *Cerbera manghas* tree are usually considered waste because they don't have a practical use and form waste that is burned most of the time. Burning these leaves wastes valuable energy resources that could otherwise be used, and at the same time contributes to the production of greenhouse gases. Previous studies [12-14] have also shown that converting waste leaves into a more compact type of briquettes rather than simply burning them improves the fuel quality of the leaves. Moreover, a previous study [12] showed that briquettes made from the leaves of *Cerbera manghas* have a calorific value comparable to other briquettes.

Previous studies [12-14] have solved the main problem of waste disposal by converting leaves into briquettes, but there are also drawbacks. In these studies, tapioca flour was used as a binding agent for briquettes. Tapioca is an edible source that competes with the availability of food resources when also used for making briquette [15,16]. With the prevalence of food waste and food shortages in some areas today, using food resources to make briquettes is not recommended. Therefore, alternatives to tapioca flour for use as briquette binders must be considered and researched to maintain the availability of the resource food.

Rejected pineapple has the potential to change tapioca as a binding agent because it contains natural fibers and sugars. These rejected pineapples originated from pineapples that have been screened but are classified as unsellable due to poor. Furthermore, they are often separated from the edible fruit and left to rot, resulting in unsightly and inedible waste. This waste can be reduced by using it as a binder for briquette. In fact, one study [17] found the feasibility of discarded pineapple as a binder replacement for tapioca flour with superior quality compared to other common briquettes, suggesting that discarded pineapple is also a good tapioca substitute.

The aim of the current study is to determine the impact and feasibility of substituting discarded pineapple for tapioca as a binder for renewable energy sources. This study thoroughly inspects the quality of briquettes using bomb calorimeters, final analysis, and combustion characteristics testing. To measure the change in calorific value with the use of tapioca compared to pineapples sorted with different ratios of biomass and binder, a test using a bomb calorimeter is performed. Calorific value tests and a final analysis of briquettes were conducted to determine their practical usability. Combustion property tests were conducted to determine the ideal production settings for *Cerbera*

*manghas* leaves from *Cerbera manghas* tree as shown in Fig. 1, briquettes, and pineapple waste as shown in Fig. 2.



Fig. 1. *Cerbera manghas* tree



Fig. 2. Rejected pineapple

## 2 Experimental Method

The raw materials for the briquettes, *Cerbera manghas* leaves and discarded pineapples, were easily collected as most of them were considered waste. After collecting them, the *Cerbera manghas* leaves were dried in the sun for a week to reduce their moisture content. After sufficient exposure to sunlight, the leaves were torn into small pieces with various biomass sizes as shown in Fig. 3. The pineapple was then crushed into a viscous material, as shown in Fig. 4. Combining the crushed leaves with the crushed pineapple acts as a binding agent and is placed in a mold as shown in Fig. 5. Compress into briquettes under hydraulic pressure using the press shown in Fig. 6.



Fig. 3. Shredded *Cerbera manghas* leaves



Fig. 4. Smashed rejected pineapple



Fig. 5. Press Mold



Fig. 6. Hydraulic press machine

The first inspection of the briquettes was a bomb calorimeter test using a 1341 Plain Jacket Oxygen Bomb Calorimeter, as shown in Fig. 7. Briquettes undergo calorific value testing and final analysis according to ASTM standards. Finally, the combustion properties of briquettes were evaluated in terms of burning velocity, burning temperature, burning time, and ignition time. A final experiment was performed by varying the size of the biomass and the pressure used to condense the briquettes. The particle size of the biomass was altered for 20 mesh (800  $\mu\text{m}$ ), 40 mesh (425  $\mu\text{m}$ ), and 60 mesh (250  $\mu\text{m}$ ). The hydraulic pressure was set at 1 and 2 MPa. Various combinations of particle size and hydraulic pressure were investigated, and the

1 combination that produced the best combustion characteristics was determined. The test was repeated three times and the results were averaged and found to be significant. The briquette results can be seen in Fig. 8.



Fig. 7. Oxygen bomb calorimeter

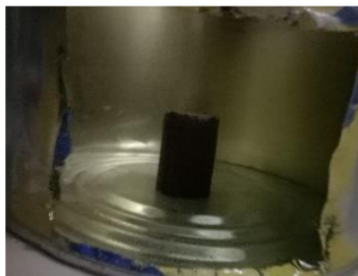


Fig. 8. Briquette made from *Cerbera manghas* leaves with rejected pineapple

### 3 Results and Discussion

The briquette in this study uses a 95% to 5% biomass-to-binder ratio as it provides a high calorific value while also keeping the rigidity of the briquette in check [17, 18]. The result of the calorific value test shows that the briquette has a calorific value of 4347.46 kcal kg<sup>-1</sup> according to the ASTM D 5865 - 13 standards. The calorific value is comparable to other biomass briquettes mentioned in Table 1. [12–14]. Since tapioca has a higher caloric value (3574.47 kcal/kg) [12], the tapioca-bonded briquette has a higher caloric value than the pineapple bonded briquette (435.02 kcal/kg). Table 2 shows the result of the ultimate analysis. The combined weight of the carbon and hydrogen contributes to the calorific value as they are the primary combustible elements.

Table 1. Comparison between 95% *Cerbera manghas* leave waste briquettes with 5% rejected pineapple to other briquettes

Biomass Source	Binder	Biomass to Binder Ratio	Calorific Value (kcal kg <sup>-1</sup> )
<i>Cerbera manghas</i> leaves	Rejected Pineapple	95% : 5%	4347.46
<i>Cerbera manghas</i> leaves [12]	Tapioca	90% : 10%	4164.00
<i>Pterocarpus indicus</i> leaves [18]	Rejected Pineapple	95% : 5%	4169.76
<i>Pterocarpus indicus</i> leaves [13]	Tapioca	90% : 10%	4648

**Table 2.** 95% *Cerbera manghas* leaves and 5% rejected pineapple briquette ultimate analysis

Parameters	Unit	As Received	Test Method
Carbon	[%wt]	43.85	ASTM D 5373-16
Hydrogen	[%wt]	5.12	ASTM D 5373-16
Nitrogen	[%wt]	2.93	ASTM D 5373-16
Oxygen	[%wt]	25.86	ASTM D 3176-15

The effects of different particle sizes and hydraulic pressure on the burning temperature are shown in Fig. 9(a). The higher burning temperature the more it is desired because it gives higher heat transfer, which is achieved by using smaller particle size and higher compression pressure. The maximum burning temperature (547 °C) was found for a briquette with a compression pressure of 2 MPa and particle size of 60 mesh.

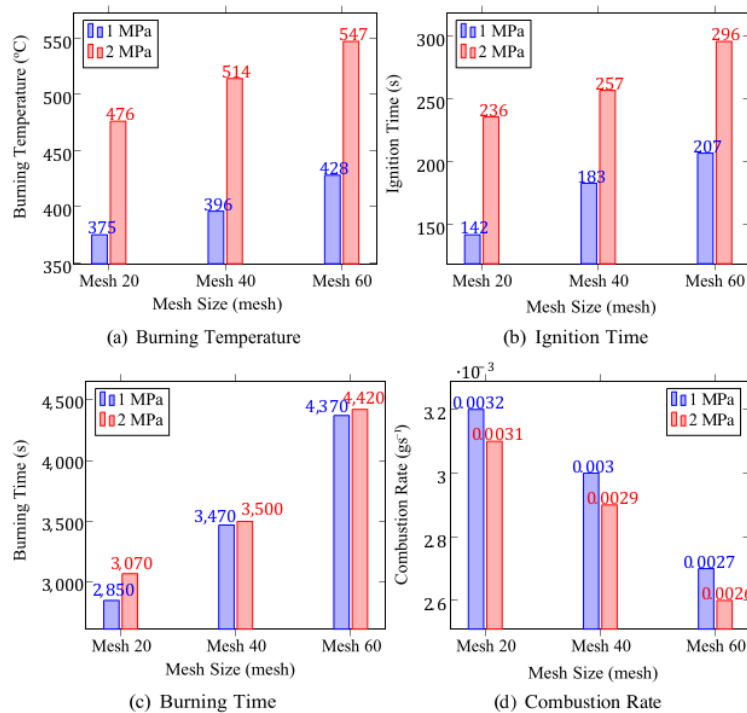
**Fig. 9.** *Cerbera manghas* leaves and rejected pineapple briquette combustion characteristics

Fig. 9(b) shows the effect of different particle sizes and hydraulic pressure on ignition time. Ignition time refers to the time it takes to ignite the briquette [14]. A longer ignition time may be achieved by having briquette of a smaller particle size and higher compression pressure. The peak ignition time (296 s) is observed for briquettes with a compression pressure of 2 MPa and particle size of 60 mesh.

The impact of various particle sizes and hydraulic pressures on the burning time is given in Fig. 9(c). The burning time indicates the time required for the fuel to reduce into ashes after being ignited [14]. A long burning time can be achieved by a briquette with a smaller particle size and larger compressing pressure. Peak burning time (4420 seconds) was found in a briquette with 2 MPa compacting pressure and particle size of 60 mesh.

The effects of different particle sizes and hydraulic pressure on the combustion rate are shown in Fig. 9(d). The combustion rate shows how fast the combustible components of the fuel are consumed when the briquette is burned [14]. A faster combustion rate results in a shorter burning duration. A slower combustion rate may be achieved with a smaller particle size and higher compacting pressure. The lowest combustion rate ( $0.0026 \text{ g s}^{-1}$ ) is observed for briquettes with a compression pressure of 2 MPa and a biomass size of 60 mesh.

There is no significant difference in the burning time and the combustion rate at different hydraulic pressure levels studied. However, these results are consistent with previous studies showing that greater hydraulic pressure resulted in longer burning duration and faster combustion rate [14]. As for burning temperature and ignition time, it shows that higher compacting pressure resulted in higher temperature and longer ignition duration of the briquette. This increased combustion performance can be attributed to the denser briquette produced with higher hydraulic pressure during fabrication. Denser briquettes have more fuel mass per unit volume, resulting in higher burning temperature from higher energy release compared to the less dense briquette. However, it also means that denser briquettes take more time to be ignited.

#### 4 Conclusion

The results of this study suggested that 95% *Cerbera manghas* leave waste briquettes with 5% rejected pineapple give briquette with good structural integrity and a high calorific value of  $4347.46 \text{ kcal kg}^{-1}$ , which is comparable to other briquettes that use a 95% to 5% biomass to binder ratio. The use of rejected pineapple to replace tapioca as a binding agent has led to the reduction of the overall calorific value of the briquette. Nevertheless, the results of the calorific value and ultimate analysis tests show that the briquettes using *Cerbera manghas* leaves and rejected pineapples as briquette binders can be used as a renewable energy source. Combustion characteristics analysis suggests that the optimal production parameters for briquettes are 2 MPa hydraulic pressure and 60 mesh size or  $250 \mu\text{m}$  particle size. These 2 parameters resulted in a briquette with a combustion rate of  $0.0026 \text{ g s}^{-1}$ , a burning temperature of  $547^\circ\text{C}$ , a burning time of 4420 seconds, and an ignition time of 296 seconds.

## References

1. Pambudi, N. A., Itaoka, K., Chapman, A., Hoa, N. D., and Yamakawa, N.: Biomass energy in Japan: Current status and future potential. *International Journal of Smart Grid and Clean Energy* 6(2), 119–126 (2017)
2. Kotcher J, Maibach E and Choi W T: Fossil fuels are harming our brains: identifying key messages about the health effects of air pollution from fossil fuels. *BMC Public Health* 19, 1079 (2019)
3. Tian, X. and You, F.: Carbon-neutral hybrid energy systems with deep water source cooling, biomass heating, and geothermal heat and power. *Applied Energy* 250(C), 413–432 (2019)
4. Bot, B. V., Axaopoulos, P. J., Sakellariou, E. I., Sosso, O. T., and Tamba, J. G.: Energetic and economic analysis of biomass briquettes production from agricultural residues. *Applied Energy* 321, 119430 (2022)
5. Thiphkhunthod, P., Meeyoo, V., Rangsunvigit, P., Kitiyanan, B., Siemanond, K., and Rirksomboon, T.: Predicting the Heating Value of Sewage Sludges in Thailand from Proximate and Ultimate Analyses. *Fuel* 84, 849–857 (2005)
6. Sengar, S. H., Mohod, A. G., Khandetod, Y. P., Patil, S. S., and Chendake, A. D.: Performance of briquetting machine for briquette fuel. *International Journal of Energy Engineering* 2(1), 28–34 (2012)
7. Mwampamba, T. H., Owen, M., and Pigaht M.: Opportunities, challenges and way forward for the charcoal briquette industry in Sub-Saharan Africa. *Energy for Sustainable Development* 17(2), 158–170 (2013)
8. Stolarski, M. J., Szczukowski, S., Tworkowski, J., Krzyżaniak, M., Gulczyński, P., and Mleczek, M.: Comparison of quality and production cost of briquettes made from agricultural and forest origin biomass. *Renewable Energy* 57 (C), 20–26 (2013)
9. Sakkampang, C. and Wongwuttanasatian, T.: A Study of Combustion and Environments of Biomass Briquettes from Sawdust Mixed with Glycerin. *Advanced Material Research* 953-954, 235–239 (2014)
10. Brunerová, A., Roubík, H., Brožek, M., Herák, D., Šleger, V., and Mazancová: Potential of Tropical Fruit Waste Biomass for Production of Bio-Briquette Fuel: Using Indonesia as an Example. *Journal Energies* 10(12), 2119 (2017)
11. Bilgili, F., Koçak, E., Bulut, Ü., and Kuşkaya, S.: Can biomass energy be an efficient policy tool for sustainable development? *Renewable and Sustainable Energy Reviews* 71(C), 830–845 (2017)
12. Anggono, W., Suprianto, F. D., Gotama, G. J., Evander, J., and Kasrun, A. W.: Investigation on Biomass Briquette as Energy Source from Waste Leaf Cerbera Manghas. *International Journal of Industrial Research and Applied Engineering* 1(1), 11–14 (2016)
13. Anggono, W., Suprianto, F. D., Gotama, G. J., Sutrisno and Evander, J.: Combustion Characteristics Behavior of Pterocarpus indicus Leaves Waste Briquette at Various Particle Size and Pressure. *IOP Conference Series: Materials Science and Engineering* 417, 012007 (2018)
14. Anggono, W., Sutrisno, T., Suprianto, F. D., and Evander, J.: Biomass Briquette Investigation from Pterocarpus Indicus Leaves Waste as an Alternative Renewable Energy. *IOP Conference Series: Materials Science and Engineering* 241 (1), 1–5, 2017
15. Lewandowski, I.: Securing a sustainable biomass supply in a growing bioeconomy. *Global Food Security* 6, 34–42 (2015)
16. Giroto, F., Alibardi, L., and Cossu, R.: Food waste generation and industrial uses: A review. *Waste Management* 45, 32–41 (2015)



17. Anggono, W., Sutrisno, Suprianto, F. D., Yulio, A. F. X., and Jeremy G. J.: Combustion Performance of *Pterocarpus indicus* Leaves Wastes Briquette with Rejected Papaya as Binding Agent. IOP Conference Series: Earth and Environmental Science 581, 012020 (2020)
18. Gotama, G. J., Anggono, W., Sutrisno, Suprianto, F. D., Jonoadji, N., and Yulio, A. F. X.: Investigation of briquette derived from *Pterocarpus indicus* leaves and rejected pineapples as inedible sources of renewable energy. IOP Conference Series Material Science and Engineering 1034, 012074 (2021)

# Briquette Combustion Characteristics of Cerbera manghas Leaves with Rejected Pineapple as Binding Agent as a Sustainable Fuel

ORIGINALITY REPORT

20%

SIMILARITY INDEX

20%

INTERNET SOURCES

18%

PUBLICATIONS

%

STUDENT PAPERS

PRIMARY SOURCES



repository.petra.ac.id  
Internet Source

20%

Exclude quotes Off

Exclude matches < 1%

Exclude bibliography On